



上智大学
SOPHIA UNIVERSITY

Contact

International Exchange

→ Center for Global Education and Discovery
overseas-co@sophia.ac.jp

Admissions Information

→ Admissions Office
Undergraduate admissions: admission-u-co@sophia.ac.jp
Graduate School admissions: admission-g-co@sophia.ac.jp

Research Activities

→ Center for Research Promotion and Support
sunivrsc@sophia.ac.jp

■ SOPHIA UNIVERSITY
7-1, Kioicho, Chiyoda-ku, Tokyo
102-8554 Japan



■ SOPHIA Magazine Online



Facebook @SophiaUniversityE/

X @SophiaUniv_ENG

Instagram @sophiauniversity

Youtube: @c/SophiaAcJp

SOPHIA U

VIEWBOOK

SOPHIA UNIVERSITY
TOKYO, JAPAN



February 2024

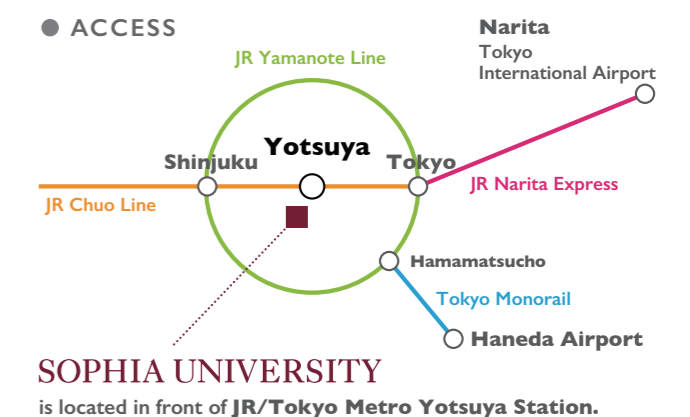
FOR OTHERS, WITH OTHERS



Our Location: Yotsuya, Tokyo

Sophia University is centrally located in megacity “Tokyo”, a political and economic hub that affords an invaluable opportunity to experience a unique culture in which traditional and modern elements intermingle.

Our campus is located within walking distance of central ministries and agencies such as the National Diet, the Imperial Palace, the State Guest House, and many other vital organizations. Shinjuku, one of the most exciting areas in Tokyo, is just a five-minute train ride away from Yotsuya, our station.



President of Sophia University | Yoshiaki Terumichi

Message from the President

As the 21st Century unfolds, we find ourselves in challenging times. Major obstacles to impartiality may have been lifted, but not all. Facing the world on the brink, many of us feel uncertain where it is leading to. Many wonder if countries will become more divisive, or if we will be able to rise above such disruption and become unified as a single global society without boundaries.

Our university was founded on the belief that all people—no matter what one’s religion, ethnicity, or nationality may be—should be brought together in peaceful unity and impartiality. This vision of our

founders still remains to present day, having a tremendous impact on Sophia University, ensuring that we remain committed to their ideals. This is reflected in our educational motto: For Others, With Others.

Higher education must constantly strive to enrich both the hearts and minds of students. How we instill dignity, respect, and empathy in our students is a question we often ask ourselves at Sophia University. We encourage students to view the world from multiple perspectives, with a critical mind, and to strive towards a better future for all.





Why Choose Sophia?

1. One of the top private universities in Japan

Sophia's reputation for excellence in undergraduate education, outstanding graduate programs, and a competitive research environment enables it to maintain its ranking as one of Japan's top private universities. Students benefit immensely from the ability to study the latest developments in their chosen field of specialization

with distinguished Japanese and international faculty members. Reflecting the quality of their education, Sophia graduates are highly regarded as leaders in the global workplace at multinational companies and international organizations.

2. Japan's pioneer in global education

Sophia University has offered English medium programs for more than 60 years. Reflecting the high regard in which its track record as a pioneer in global education is held, the University has been chosen for a series of subsidy programs including the Global 30 Project and the Top Global University Project, implemented by the Ministry of Education, Culture, Sports, Science and

Technology to promote internationalization of universities in Japan. These programs help to further strengthen the University's efforts to boost the global competency of our students. At the same time, the international network of over 400 overseas institutions in 83 countries/regions ensures the dynamic mobility of our students and faculty.

3. Diversity on one campus in the fascinating city of Tokyo

Sophia University has a compact footprint that brings together all faculties and graduate schools in the sciences and humanities on a single campus. This approach yields significant benefits for the University's programs by deepening educational mobility, collaboration, and specialization. By offering an environment that brings together students and faculty members from different cultural, linguistic, and religious backgrounds, the campus

functions as a microcosm of global society. No less beneficial is the University's location in Tokyo, a megacity that invites students to enjoy all the benefits of its state-of-the-art technology, facilities, and infrastructure. Best of all, the city affords an invaluable opportunity to experience a unique culture in which traditional and modern elements intermingle.

4. Wide variety of English-medium programs

Students can study various areas such as liberal arts, science and technology, and environmental studies, all strengths of Japan, in English. Sophia also boasts a long tradition in Japanese studies. Monumenta Nipponica, an English-medium scholarly journal that serves as an important resource for researchers studying Japan worldwide, is edited at the University. The following programs offer entirely of English-medium curriculum:

Undergraduate level: Liberal Arts, Science and Technology, Sophia Program for Sustainable Futures, Graduate level: Education, Global Studies, Global Environmental Studies, TESOL (Teaching English to Speakers of Other Languages), Science and Technology Non-Degree programs: Liberal Arts, Center for Language Education and Research (Japanese-language courses)

5. Renowned for offering high-quality language education

Since the time of its founding Sophia has emphasized foreign language education, and Sophia graduates are highly regarded for their exceptional language proficiency and communication skills. The Center for Language Education and Research offers courses in 22 languages to Japanese speaking students. The Center also provides a wide variety of Japanese courses for international

students. In addition to fostering the ability to utilize foreign language proficiency as they pursue careers in an increasingly global and diverse world, Sophia University aims to lay the groundwork for students' ability to use foreign languages to logically develop their own ways of thinking, present their thoughts, and negotiate at a deeper level.



Facts & Figures

Discover the essence of Sophia University through numbers. Let's look at the charm of Sophia University, which is connected to the world, through numbers.

The 111th ANNIVERSARY

Japan's oldest Catholic University

Founded in 1913 by three Jesuit priests, Sophia University celebrated its 110th anniversary in 2023. When St. Francis Xavier, who was also involved in the establishment of the Society of Jesus, visited Japan in 1549 as a missionary, he appreciated the qualities of the intellectually curious Japanese people and asked that the Jesuits establish a university in the Japanese capital as a center for cultural and ideological exchange, which is said to have led to the establishment of Sophia University.

As of 2024

18	23	20	1
Bachelor's Programs	Master's Programs	PhD Programs	Professional Degree Program

A university with faculties and graduate programs encompassing a wide range of fields of study

29 departments in 9 faculties and 25 majors in 10 graduate programs are offered at our university. Students pursue "the highest wisdom" in a diverse area of study, including the humanities, human, social, and natural sciences, as well as engineering, all on one campus in the heart of Tokyo, while addressing global issues and striving for mutual respect that transcends differences in cultures and religions. Sophia is a small but comprehensive university offering high quality holistic education.



12,155	1,475
Number of undergraduate students	Number of graduate students

About one in 11 students is a foreign national

Approximately 9% of the student body, 1,209 students, are foreign nationals. Students from all over the world gather on our global campus, where cross-cultural communication can be enjoyed on a day-to-day basis. There are plenty of chances for learning outside of the classroom.

As of May 1, 2023



403 in 83
universities countries

Number of overseas partner institutions

Extensive International Academic Network

The extensive international network built since our founding is one of Sophia University's greatest assets. Study abroad opportunities extend throughout the world.

As of February 1, 2024



559

Number of our faculty members

Approximately one in six faculty members is a foreign national

Approximately 17%, or 96 full-time faculty members, are from overseas, fostering a global perspective through a rich cross-cultural education. The closeness of teachers and students is another charm of our university. The ratio of undergraduate students per faculty member is one of the best among private universities here in Japan.

As of May 1, 2023



84.2%

Percentage of courses attended by students from other faculties and departments

Expanding the World on One Campus

Nearly 90% of students take courses offered by other faculties and departments throughout their four years at Sophia University, expanding their horizons beyond their own studies.

As of 2019

1,006

Number of students studying abroad

1 out of 12 students take on the challenge of studying abroad

Students at Sophia enjoy extensive opportunities for study abroad, including long-term and short-term programs, study tours, and overseas internships. In addition, our quarter system, which divides the spring and fall semesters into two halves to correspond to the academic calendar of overseas universities, enabling more students to study abroad or take a leave of absence on a quarter-by-quarter basis. This provides an environment that facilitates students' wish to study abroad.

As of 2019



5,356

Number of course subjects

A Small Class Size Enhances Learning and Expertise

More than 70% of courses are taught in small classes of 40 students or less. In addition, 987 courses, or 17% of all courses, are taught exclusively in a foreign language. Not only the humanities, but also social sciences and science and engineering can be studied in a foreign language.

As of 2022



22

Languages taught

Extensive Education in Languages and Linguistics

Twenty-two languages, including English, are available for study. Our diverse curriculum is designed to facilitate learning more than one language, and many of our students learn three or more languages.

As of 2023

History of Sophia University

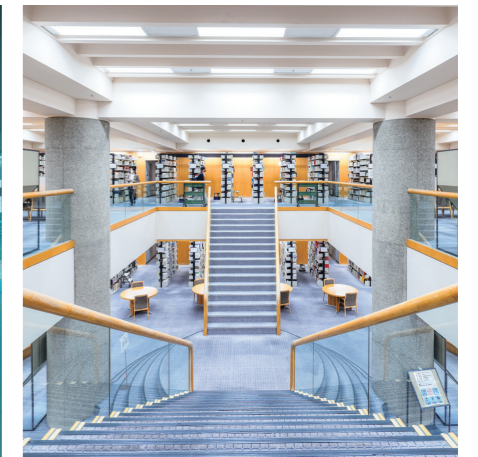


Establishing a University in the “Miyako” of Japan

The origin of Sophia University can be traced back to St. Francis Xavier, one of the founders of the Society of Jesus, a Catholic order. In 1549, Xavier came to Japan as a missionary and highly praised the intellectually curious qualities of the Japanese people, requesting the Jesuits establish a university in the Japanese capital as a center for cultural and ideological exchange. However, Japan subsequently entered a period of Christian prohibition. While it seemed as though Xavier’s dreams would go unrealized, a 350-year lapse reignited the momentum needed.

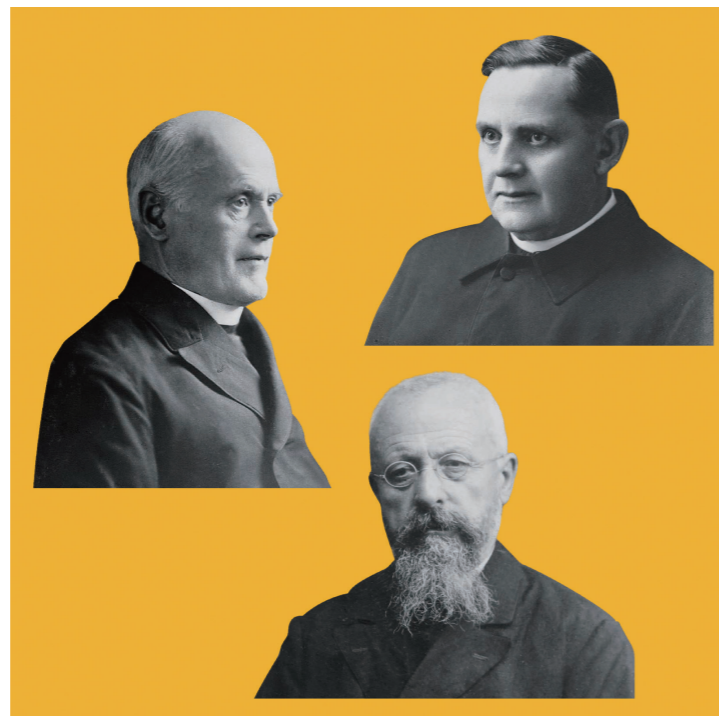
Becoming a World-Class University

Since its establishment over a century ago, Sophia University has developed an education based on Christian humanism that transcends national, linguistic, and academic boundaries. We believe that -using one’s talents and learning for the benefit of others leads to personal growth- and all studies and research shall contribute to a sustainable future. Sophia University will continue to take on the challenge of various reforms to contribute to the achievement of the Sustainable Development Goals (SDGs) and solve various global issues facing the world today while carving out the next history as a university open to the world.



Wisdom from Across Countries and Cultures

In 1908, three Jesuit priests received an order from Pope Pius X to establish a university in Japan. The three priests were of various nationalities, including German, French, and English. They were well versed not only in Western studies but also in Eastern culture and thought, and devoted themselves to the establishment of the university while learning Japanese language and its culture. The spirit of Sophia University, which was conceived as a university open to the world, transcending national, linguistic, and academic boundaries ever since its establishment. After overcoming many hardships, Sophia University opened its door in 1913, with only 15 students.



Distinguished Visitors to Sophia University

Sophia University, with its strong ties to the Catholic Church and various international organizations including embassies of different countries, has welcomed numerous distinguished visitors to its campus. These esteemed guests have delivered lectures and engaged with our students. The list of distinguished guests includes:

- Helmut Kohl (Chancellor of West Germany) / 1983
- Lech Walesa (President of Poland) / 1994
- José María Aznar Lopez (Prime Minister of Spain) / 1997
- Andrés Pastrana (President of Republic of Colombia) / 1999
- Gerhard Fritz Kurt Schröder (Chancellor of Germany) / 2004
- Robert Michael Gates (U.S. Secretary of Defense) / 2007

- Benigno S. Aquino III (President of the Republic of the Philippines) / 2013
- Thomas Yayi Boni (President of the Republic of Benin) / 2013
- Richard L. Armitage (Former U.S. Deputy Secretary of State) / 2014
- Emanuel Manny Mori (President, the Federated States of Micronesia) / 2014
- Noam Chomsky (Institute Professor and Professor Emeritus at MIT) / 2014
- Tabaré Vázquez (President of the Oriental Republic of Uruguay) / 2015
- Antonio Guterres (UN Secretary-General) / 2017
- Grand Duke Henri of Luxembourg / 2017
- Pope Francis / 2019



Pope John Paul II / 1981



Mother Teresa / 1981, 82, 84
Laureate, Nobel Peace Prize



Wen Jiabao / 2011
Premier, People's Republic of China



António Guterres / 2017
UN Secretary-General

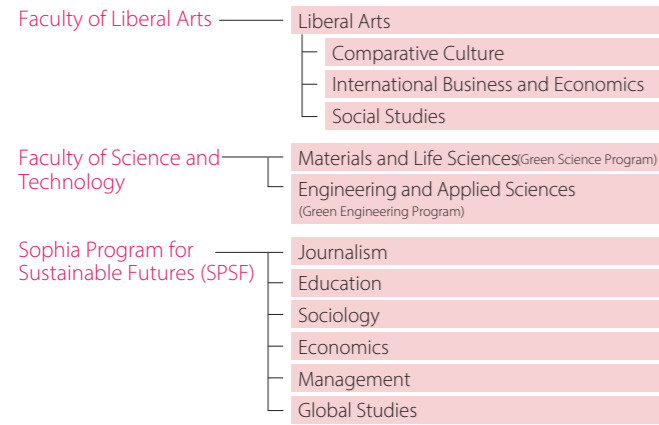


Pope Francis / 2019

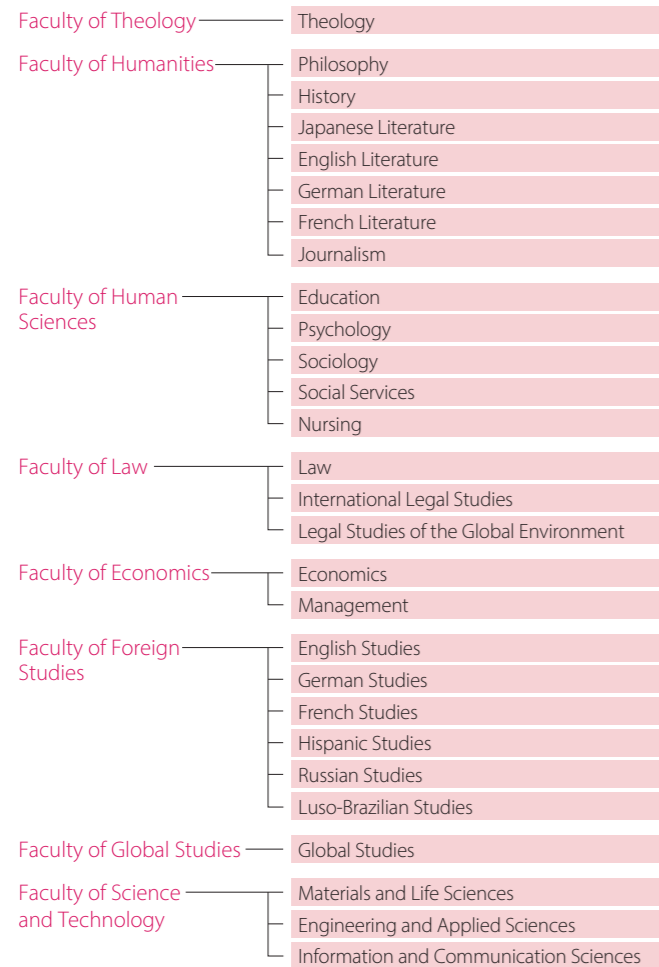
Academic Departments and Programs

Undergraduate Faculties and Departments

ENGLISH-MEDIUM PROGRAMS



JAPANESE-MEDIUM PROGRAMS



GENERAL STUDIES COURSES

Center for Liberal Education and Learning

STUDY ABROAD PROGRAMS

Center for Global Education and Discovery

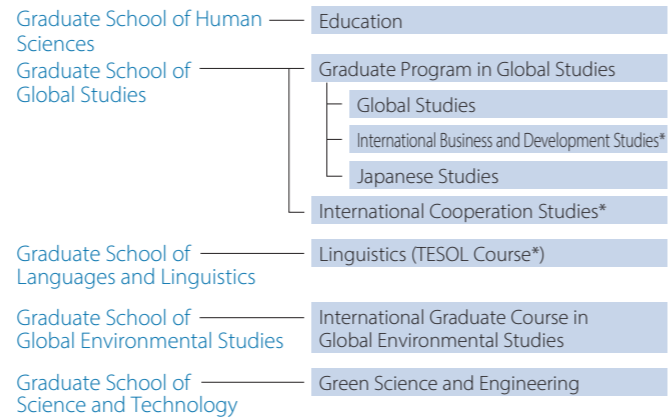
LANGUAGE PROGRAMS

Center for Language Education and Research

Graduate Schools and Programs

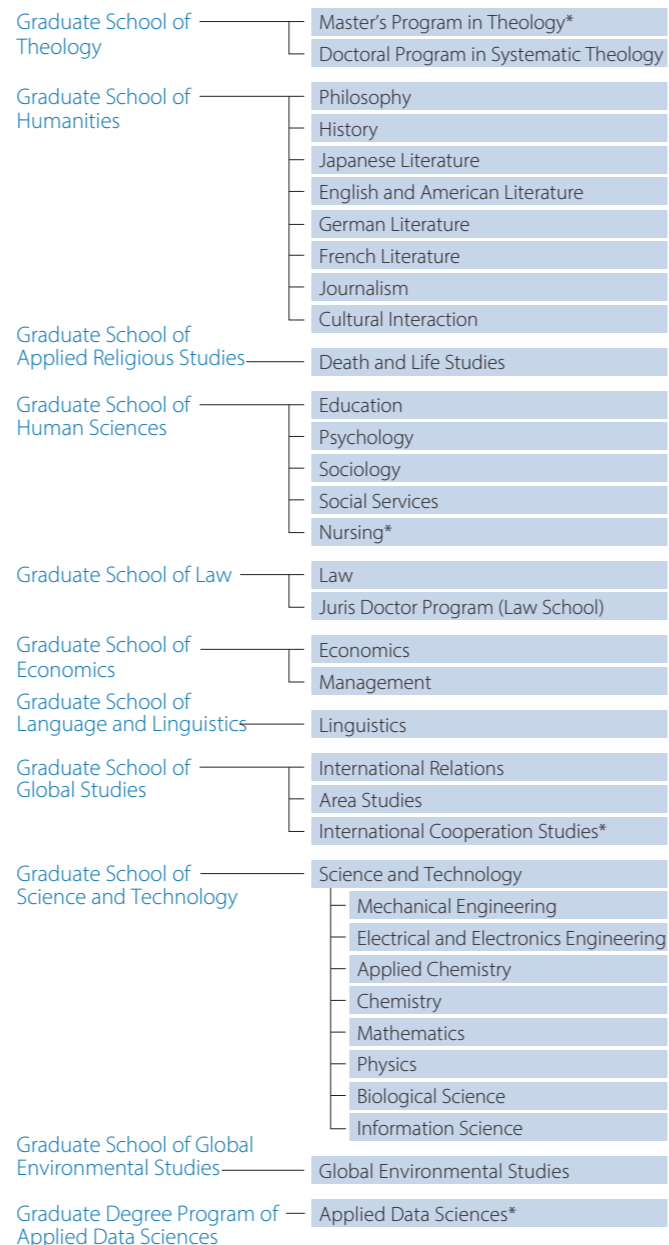
ENGLISH-MEDIUM PROGRAMS

*Master's program only



JAPANESE-MEDIUM PROGRAMS

*Master's program only



Learning Opportunities for International Students

UNDERGRADUATE PROGRAMS OFFERED IN ENGLISH



Sophia University provides comprehensive undergraduate and graduate programs, all of which are conducted entirely in English.

Faculty of Liberal Arts

Majors: Comparative Culture, Social Studies, International Business and Economics

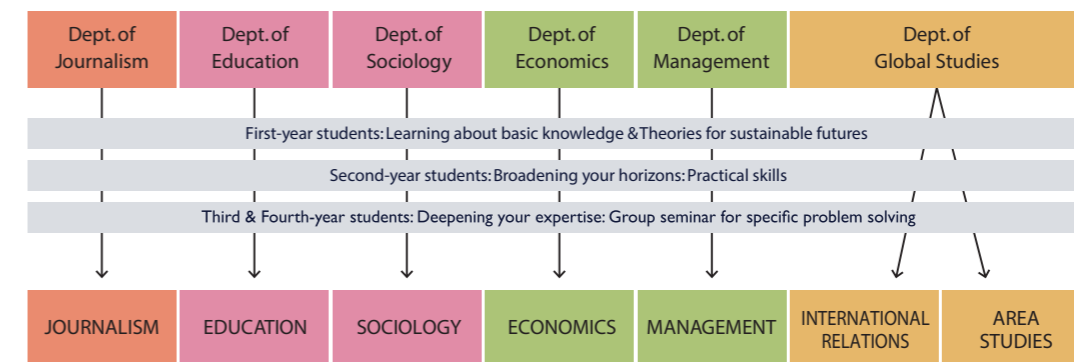
The FLA is a pioneering program in international education in Japan. Students come from various backgrounds and are multicultural. The faculty is also international and very diverse, more than 50% of its members are from overseas, bringing with them a great deal of diverse cultural experiences.



SPSF: Sophia Program for Sustainable Futures

Majors: Journalism, Education, Sociology, Economics, Management, and Global Studies

The world today faces a broad range of sustainability issues, which can only be tackled by a combination of specialized knowledge and interdisciplinary collaboration. This new English-taught program allows students to gain in-depth knowledge in their field of specialization, while taking interdisciplinary courses on the theme of Sustainable Futures, educating students to be the kind of game changers our globalized world needs in order to steer towards a sustainable future.



Faculty of Science and Technology

Green Science Program, offered by the Department of Materials and Life Sciences, is designed to acquire fundamental knowledge of substances, and to overcome environmental issues at the atomic and molecular levels based on green material sciences.

Green Engineering Program, offered by the Department of Engineering and Applied Sciences, is designed to learn electrical and mechanical engineering skills to help develop energy conservation technology, efficient power generation and distribution and power transmission.



GRADUATE PROGRAMS OFFERED IN ENGLISH



Graduate Program in Education M.A./Ph.D.

The educational sciences study all phenomena related to human development from different perspectives: comparative and historical, philosophical, psychological, policy and practice, and sociological.

Graduate Program in International Cooperation Studies M.A.

The Graduate Program in International Cooperation Studies fosters people who can play a role in solving increasingly diverse global issues at the forefront of international cooperation in international organizations, governments, private companies, and other fields.

Graduate Program in Global Environmental Studies M.A./Ph.D.

In a rapidly globalizing world, acting as an incubator for the fostering of talented individuals to come up with concrete solutions to achieve SDGs is the mission that has been bestowed upon the Graduate School of Global Environmental Studies at Sophia University.

Graduate Program in Global Studies M.A./Ph.D.

The Graduate Program in Global Studies emphasizes inquiry into global processes in the contemporary world and their historical antecedents. Its curriculum combines the perspectives and methods of academic disciplines with cross-cultural understandings of Japan and other world regions.

Graduate Program in Linguistics (TESOL Course) M.A.

The M.A. Program in Linguistics (TESOL) builds on Sophia's traditional strengths in linguistics and foreign language education. It provides graduate courses similar to those in the United States and Canada with emphasis on both theory and practice.

Graduate Program in Science and Technology (Green Science and Engineering) M.S./Ph.D.

The Green Science and Engineering Division prioritizes environmental and sustainability-related studies, recognizing their crucial role in the future of humankind. To encourage interdisciplinary education, faculty members from eight diverse divisions - Mechanical Engineering, Electrical and Electronics Engineering, Applied Chemistry, Chemistry, Mathematics, Physics, Biological Science, and Information Science - are actively involved in both teaching and research guidance.



EXCHANGE PROGRAM



Not only degree-seeking students, but also international students from partner institutions with an exchange agreement can also study in programs taught in English as exchange students. Around 320 students come from all over the world each semester, which enhances the diversity of the Sophia student body.

Exchange students are enrolled for one or two semesters and take content-based courses together with Sophia students. Other than these courses, Japanese language courses are also available at a wide range of levels allowing those who wish to learn Japanese from beginner to advanced levels.

The academic calendar runs from April to the end of July for the spring semester and from mid-September to the end of January for the autumn semester. Those who fulfill the application requirements can apply after having been nominated through the partner institutions.

The programs at Sophia University bring together students from diverse nationalities and backgrounds and enable them to learn from a wide range of perspectives.

SOPHIA SHORT-TERM PROGRAMS



Summer Sessions and January Session are offered for those who are interested in a short-term study at Sophia. Program participants can gain first-hand experience on many aspects of not only Japan, but also East Asian culture and society – witnessing the myriad of ways in which the cultures of the world are reflected in the maze-like urban landscape of Tokyo. The Summer Sessions welcomed over 11,000 students from around the globe since its foundation in 1961. First launched in 2013, January Session is also popular among our participants, consisting of courses which take participants to a journey through the world of Japanese language, culture, and contemporary social issues.



NON-DEGREE PROGRAMS



Non-degree students can enroll in the Faculty of Liberal Arts (FLA) or the Center for Language Education and Research (CLER) to take undergraduate courses and earn credits on a full-time basis.

English Track

For students who wish to study for one or two semesters and earn credits as full-time students. Students take classes from the following fields.

- Comparative Culture
- International Business and Economics
- Social Studies
- Japanese Studies
- Japanese Language Regular Program

Japanese Intensive Track

For students who wish to take Japanese language courses intensively for one or two semesters and earn credits as full-time students.

TUITION AND FEES

Specific Tuition fees and payment deadlines differ depending on the faculty, department, major, program, and year of enrollment. For details, please refer to the website and admissions information.



SCHOLARSHIPS

Various types of scholarships and financial aids are available for degree students.

Scholarship Application Accepted at the Time of Admission Application

New Students Scholarship

Adachi Scholarship for students from Southeast Asia and Africa

Other Financial Aid Programs

Sophia University Tuition Support Scholarships

The Monbukagakusho Honors Scholarship

Sophia University Academic Excellence Scholarships

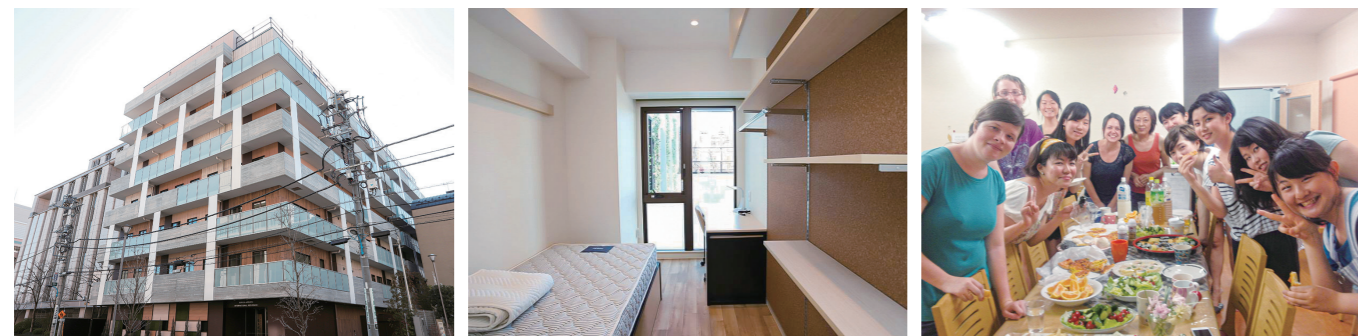
Other scholarship programs: more than 100 offered by public or private organizations



DORMITORIES

Sophia has several off-campus dormitories and affiliated dormitories for degree students in the Tokyo area.

- Sophia Soshigaya International House
- Sophia-Arrupe International Residence
- Sophia Edagawa Men's Dormitory
- Sophia Higashi Nakano Women's Dormitory
- Sophia Kasai International House Women's Dormitory



Sophia University Overseas Partner Institutions



403 institutions in 83 countries / regions (as of February, 2024)
Partners with student exchange agreements : 343 institutions in 63 countries/regions

ASIA

BRUNEI

- Universiti Brunei Darussalam

CHINA

- Beijing Foreign Studies University
- Central University of Finance and Economics
- China Foreign Affairs University
- Dalian University of Technology
- Fudan University
- Harbin Institute of Technology
- Nankai University
- Peking University
- Renmin University of China
- Shanghai International Studies University
- Tsinghua University
- Wuhan University
- Xiamen University
- The Chinese University of Hong Kong
- The Chinese University of Hong Kong, Shenzhen
- Hong Kong University of Science and Technology
- The University of Hong Kong
- The Education University of Hong Kong
- City University of Hong Kong
- University of Macau
- Xi'an Jiaotong-Liverpool University
- Beijing International Studies University
- Huazhong University of Science and Technology
- Inner Mongolia University of Technology
- University of Electronic Science and Technology of China
- Yanshan University

INDONESIA

- Universitas Gadjah Mada
- Universitas Indonesia
- Institut Teknologi Bandung
- IPB University
- Petra Christian University
- Sanata Dharma University
- Atma Jaya Catholic University of Indonesia
- Maranatha Christian University

MALAYSIA

- Universiti Kebangsaan Malaysia
- University of Malaya
- Universiti Teknologi Malaysia
- Universiti Utara Malaysia

PHILIPPINES

- Ateneo de Manila University
- De La Salle University
- University of the Philippines

SINGAPORE

- Nanyang Technological University
- Singapore Management University
- Yale-NUS College

REPUBLIC OF KOREA

- Catholic University of Daegu
- Catholic University of Korea
- Hankuk University of Foreign Studies
- Hanyang University
- College of Humanities, Pusan National University
- Seoul National University
- Sogang University
- Sookmyung Women's University
- Yonsei University

TAIWAN

- Fu Jen Catholic University
- National Chengchi University
- National Taiwan University

THAILAND

- Chiang Mai University
- Chulalongkorn University
- Mahidol University
- Thammasat University
- Kasetsart University
- King Mongkut's University of Technology Thonburi
- Khon Kaen University
- Panyapiwat Institute of Management
- Thai-Nichi Institute of Technology
- Xavier Learning Community

CAMBODIA

- Royal University of Fine Arts
- Royal University of Phnom Penh

INDIA

- Assumption College
- CHRIST (Deemed to be University)
- Kristu Jayanti College
- Jadavpur University
- Loyola College of Social Sciences
- St. Aloysius College
- St. Berchmans College
- St. Joseph's College
- St. Teresa's College
- St. Xavier's College, Ahmedabad
- St. Xavier's College, Kolkata
- St. Xavier's College, Mumbai

LAOS

- National University of Laos

MYANMAR

- Yangon Technological University

MONGOLIA

- Mongolian University of Science and Technology

VIETNAM

- Can Tho University
- Foreign Trade University
- VNU University of Social Sciences and Humanities, Hanoi

MIDDLE EAST

ISRAEL

- Tel Aviv University

LEBANON

- Université Saint-Joseph

TURKEY

- Istanbul Bilgi University

AFRICA

BENIN

- Université d'Abomey-Calavi

BURKINA FASO

- University Ouaga II

CONGO

- Université Loyola du Congo

CAMEROON

- Catholic University of Central Africa

CÔTE D'IVOIRE

- Centre de Recherche et d'Action pour la Paix
- Université Félix Houphouët-Boigny

EGYPT

- Egypt-Japan University of Science and Technology

ETHIOPIA

- Addis Ababa University

GHANA

- Catholic Institute of Business and Technology

KENYA

- Hekima University College
- University of Nairobi

MALAWI

- University of Malawi

SOUTH AFRICA

- Faculty of Humanities, University of Pretoria
- Stellenbosch University

TANZANIA

- Sokoine University of Agriculture

TUNISIA

- University of Sousse

ZIMBABWE

- Arrupe Jesuit University

NORTH AMERICA

CANADA

- University of Alberta
- The University of British Columbia
- King's University College at the University of Western Ontario

- Université Laval
- The University of Manitoba
- McGill University
- University of Ottawa
- University of Regina
- University of Victoria
- The University of Western Ontario
- Université de Montréal
- York University

USA

- University of Arizona
- Bennington College
- Boston College
- California State University, Fullerton
- University of California, Santa Cruz
- Canisius College
- The Catholic University of America
- Clemson University
- University of Connecticut
- Creighton University
- University of Colorado Boulder
- DeSales University
- Duquesne University
- Fordham University
- George Mason University
- Georgetown University
- University of Georgia
- Georgia Institute of Technology
- Gonzaga University
- Haverford College
- University of Hawai'i at Mānoa
- College of the Holy Cross
- John Carroll University
- The University of Kansas
- Le Moyne College
- Loyola Marymount University
- Loyola University Chicago
- Loyola University New Orleans
- University of Louisiana at Lafayette
- Marquette University
- University of Massachusetts Amherst
- University of Massachusetts Boston
- University of Miami
- University of Minnesota
- The University of Mississippi
- University of Missouri
- University of Montana
- The New School
- University of North Carolina at Chapel Hill
- University of North Carolina at Charlotte
- North Carolina State University
- University of North Florida
- Northwest Missouri State University
- The University of Notre Dame du Lac
- Pace University
- University of Pittsburgh
- University of Portland
- Rose-Hulman Institute of Technology
- Saint Mary's College of California
- Saint Joseph's University
- Saint Peter's University
- The College of Saint Rose
- San Diego State University
- San José State University
- University of San Francisco
- Santa Clara University

- The University of Scranton
- Seattle University
- Seton Hall University
- St. John's University (NY)
- St. Mary's University
- St. Norbert College
- University of St. Thomas
- Suffolk University
- Tennessee Tech University
- The University of Texas at Austin
- University of Virginia
- Washington & Jefferson College
- University of West Florida
- University of West Georgia
- Winona State University
- University of Wisconsin-Madison
- University of Wisconsin-Whitewater
- Wittenberg University
- Xavier University
- York College of Pennsylvania
- University of California, Berkeley
- School of Nursing, University of California, Los Angeles

LATIN AMERICA and CARIBBEAN

ARGENTINA

- Universidad Católica de Córdoba
- Universidad del Salvador

BRAZIL

- Universidade de Brasília
- Universidade Estadual de Campinas
- Pontificia Universidade Católica do Rio Grande do Sul
- Pontificia Universidade Católica de São Paulo
- Universidade de São Paulo

CHILE

- Pontificia Universidad Católica de Chile
- Universidad Alberto Hurtado

COLOMBIA

- Pontificia Universidad Javeriana
- Universidad de los Andes

COSTA RICA

- University for Peace

GUATEMALA

- Universidad Rafael Landívar

MEXICO

- Universidad de Guadalajara
- Universidad de Guanajuato
- Universidad Iberoamericana Ciudad de México
- Universidad Iberoamericana León
- Instituto Tecnológico Autónomo de México
- Instituto Tecnológico y de Estudios Superiores de Monterrey
- Instituto Tecnológico y de Estudios Superiores de Occidente
- Universidad Nacional Autónoma de México
- El Colegio de México
- Instituto de Investigaciones Dr. José María Luis Mora

PERU

- Universidad del Pacífico
- Pontificia Universidad Católica del Perú

URUGUAY

- Universidad Católica del Uruguay

JAMAICA

- The University of the West Indies

EUROPE

AUSTRIA

- Universität Graz

BELARUS

- Belarusian State University
- Minsk State Linguistic University

BELGIUM

- Université Catholique de Louvain
- Université de Namur

BOSNIA-HERZEGOVINA

- University of Sarajevo

CYPRUS

- University of Cyprus

CZECH REPUBLIC

- Anglo-American University
- Faculty of Arts, Charles University

CROATIA

- University of Zagreb
- The Zagreb School of Economics and Management

DENMARK

- Aarhus University

ESTONIA

- University of Tartu

FINLAND

- Aalto University School of Business
- Hanken School of Economics
- The University of Turku

FRANCE

- Université d'Aix-Marseille
- Université d'Angers
- Université Catholique De L'Ouest in Angers
- EAC Group Business School of Arts, Culture and Luxury
- Burgundy School of Business
- Ecole Supérieure des Sciences Commerciales d'Angers
- École Supérieure de Commerce et Management
- Université de Franche-Comté, Besançon
- Institut Catholique de Paris
- Institut d'Études Politiques de Grenoble
- Institut d'Études Politiques de Paris
- Institut National des Langues et Civilisations Orientales
- NEOMA Business School
- Université Catholique de Lille
- Université Catholique de Lyon
- Université Panthéon-Assas Paris II
- Université Paris X Nanterre
- Université Bordeaux Maigne
- Université de Lille
- Université Jean Moulin Lyon 3
- Université de Strasbourg
- ESSEC Business School
- Institut Catholique de Toulouse
- Université Paul-Valéry Montpellier 3
- École française d'Extrême-Orient

- Université de Lorraine
- Sorbonne Université
- Université Paris-Dauphine

GERMANY

- Universität Bayreuth
- Rhenish Friedrich-Wilhelm University Bonn
- Freie Universität Berlin
- Technische Universität Berlin
- Bremen University of Applied Sciences
- Heinrich Heine University Düsseldorf
- Katholische Universität Eichstätt-Ingolstadt
- European University Viadrina
- Albert-Ludwigs-Universität Freiburg
- Ruprecht-Karls-Universität Heidelberg
- Universität zu Köln
- Hochschule für Wirtschaft und Gesellschaft Ludwigshafen
- Martin-Luther-Universität Halle-Wittenberg
- Hochschule für Philosophie München
- Universität Paderborn
- Universität Rostock
- Universität des Saarlandes
- Philosophisch-Theologische Hochschule Sankt Georgen
- Technische Hochschule Nürnberg Georg Simon Ohm
- Universität Trier
- Eberhard Karls Universität Tübingen
- Universität Witten/Herdecke
- Universität Hamburg
- Universität Bamberg
- Universität Duisburg-Essen
- Universität Erfurt
- Ludwig-Maximilians-Universität München
- Julius-Maximilians-Universität Würzburg

HUNGARY

- Eötvös Loránd University
- University of Pécs

ICELAND

- University of Iceland

IRELAND

- Dublin City University

ITALY

- Università di Cagliari
- Università Carlo Cattaneo
- Università Cattolica del Sacro Cuore
- Università Ca' Foscari Venezia
- Università degli studi di Napoli "L'Orientale"
- Università degli Studi di Perugia
- Università di Roma "La Sapienza"
- Università per Stranieri di Perugia

KAZAKHSTAN

- Al-Farabi Kazakh National University

KOSOVO

- University of Prishtina

LIECHTENSTEIN

- University of Liechtenstein

LITHUANIA

- Vilnius University
- Vytautas Magnus University

LUXEMBOURG

- Université du Luxembourg

NORTH MACEDONIA

- Ss. Cyril and Methodius University in Skopje

NORWAY

- University of Oslo
- University of South-Eastern Norway

POLAND

- Jagiellonian University in Kraków
- Warsaw University of Technology

PORTUGAL

- Universidade de Aveiro
- Universidade Católica Portuguesa
- Universidade de Coimbra
- Universidade do Minho
- Universidade do Porto

ROMANIA

- University of Bucharest

RUSSIA

- Far Eastern Federal University
- Herzen State Pedagogical University of Russia
- Moscow City University
- Moscow State Institute of International Relations (University) of the Ministry of Foreign Affairs of the Russian Federation
- Moscow State University
- Moscow State Linguistic University
- Petrozavodsk State University
- Ryazan State University
- Saint Petersburg State University
- Saint-Petersburg State University of Culture
- Voronezh State University

SLOVENIA

- University of Ljubljana

SPAIN

- Universitat Autònoma de Barcelona
- Universidad de Burgos
- Universidad Católica de Valencia San Vicente Mártir
- Universidad Pontificia Comillas
- Universidad de Córdoba
- Universidad de Deusto
- Universidad de Granada
- Universidad de Jaén
- Universidad de La Laguna
- Universidad de Las Palmas de Gran Canaria
- Universitat de Lleida
- Universidad Autónoma de Madrid
- Universidad de Navarra
- Universidad Loyola Andalucía
- Universidad de Salamanca
- Universidad de Sevilla
- Universitat de València

SWEDEN

- University of Gothenburg
- Linköping University
- Uppsala Universitet
- Umeå University

SWITZERLAND

- Franklin University Switzerland
- The Graduate Institute of International and Development Studies
- Université de Genève
- Universität St. Gallen
- Zurich University of Applied Sciences

THE NETHERLANDS

- Faculty of Social and Behavioural Sciences, University of Amsterdam
- Leiden University
- Rotterdam Business School

UKRAINE

- Ukrainian Catholic University

UK

- University of Birmingham
- University of Bristol
- De Montfort University
- University of East Anglia
- The University of Edinburgh
- University of Hertfordshire
- University of Leeds
- Liverpool Hope University
- Birkbeck, University of London
- Newcastle University
- University of Reading
- University of Stirling
- The School of Oriental and African Studies, University of London
- The University of Sheffield
- St Mary's University Twickenham London
- York St John University
- University of Bath

UZBEKISTAN

- Tashkent State Institute of Oriental Studies

OCEANIA

AUSTRALIA

- The University of Adelaide
- Australian Catholic University
- Deakin University
- Griffith University
- La Trobe University
- Macquarie University
- The University of Melbourne
- The University of Notre Dame Australia
- The University of Queensland
- Royal Melbourne Institute of Technology
- The University of Sydney
- University of Technology, Sydney
- The University of Western Australia
- University of Wollongong
- Western Sydney University

FIJI

- The University of the South Pacific

MICRONESIA

- College of Micronesia-FSM

NEW ZEALAND

- The University of Auckland



Research Institutes Division

Institute for Christian Culture



Mission

Sophia University, Japan's oldest Catholic university, is positioned within the rich religious traditional cultures of East Asia. Based on these distinctive characteristics, it plays an important role in promoting dialectic mutual understanding between Christianity and other religions. This Institute was established as a principal section for implementing this mission conducted in cooperation with other organizations within the University. As of May 1, 2023, this Institute included ten regular researchers, one collaborative fellow, two visiting researcher, five honorary members, all engaged in the interdisciplinary study of Christianity. It aims to spread knowledge of Christianity in Japanese culture and contribute to mutual understanding with Eastern religions, particularly those in Japan.

Principal activities

- Hosting of ongoing lecture sessions (Theme for 2022"Disease and Religion")
- Hosting of Bible lectures (Theme for 2022"Religion and Disease")
- Collection and opening to the public of library materials related to Christianity and other religions (library resources: 13,982 volumes in Japanese, 7,849 in foreign languages, periodicals 163 titles)
- This institute belongs to the"Catholic University and Christian Culture Research Institute Communication Council"and the Catholic university"Ecumenical Group for the Study of Interfaith Dialog (EGSID)", and sponsors cooperative projects with these organizations
- Bulletin (Issue no.40 in FY 2022)
- Publication of lectures and seminars ("Religion and Disease"2022 to be published)

Iberoamerican Institute



Mission

The institute was established in 1964 to conduct research into the politics, economics, society, history, arts, and culture of the Iberoamerican (Latin America and the Caribbean) region, and to serve as a center for academic exchanges with universities and research institutes in the area. It is highly regarded as one of the country's leading research institutes in the field of Latin American studies. The institute currently has 16 staff members, including researchers and administrative personnel, and in its library boasts the rich collection of approximately 40,000 books and 50 titles of academic journals on the region covering history, politics, economics as well as geography, literature, and the arts.

Principal activities

- The Institute publishes two annual journals (*Iberoamericana* and *Encuentros Lusófonos*) and two monograph series ("Investigaciones Latinoamericanas" and "Latin American Monograph Series"). It publishes in its journal *Iberoamericana* a daily chronology of Latin American news and also compiles a database of articles published in the academic journals that our library has collected. The Institute holds symposia and lectures on special topics of interest to both academic specialists and a more general audience.
- The institute has a rich network with universities and research institutes in Latin American countries. Through this network, we host visiting fellows from them, exchange publications, support visits and field works that our members carry out in the region. For further information on our activities, please visit our website (<https://dept.sophia.ac.jp/is/ibero/>; add"espanol"or"portugues" to get into the pages in Spanish or Portuguese, respectively).

Institute of Global Concern



Mission

The Institute of Global Concern (IGC) was established in April 2010 with a mission to conduct research from a global perspective, on a range of issues that threaten the dignity and solidarity of humans to provide opportunities for the conscientization of students and the public through its research output, and to engage in activities with an aim to realize another, better world. We thus hope to renew and build on the traditions of "the Sophia school" that grapples with the real problems of poverty and violence –"with Others"— in difference to the naively"objectivist"and conformist tendencies of mainstream social science today.

The IGC was built through the reorganization of the Institute for the Study of Social Justice, which was originally founded in April 1981 and actively engaged in refugee relief efforts.

Principal activities

- (1) Research on issues related to poverty, violence, and discrimination in the globalizing world.
- (2) Conscientization activities through symposia, public seminars, study groups, and book fairs.
- (3) Coordinate a variety of programs collaborating with student committees, such as study group on the Great East Japan Earthquake and the recovery in Tohoku area.
- (4) Collaboration with other institutes and groups to strengthen the social dimension of the university.
- (5) Publication of the electronic journal, Global Concern (annually)

Institute of Medieval Thought



Mission

The Institute, in collaboration with scholars from Japan and abroad, conducts research on the thought and cultural legacy of the Western middle ages, from ancient Christianity to the Renaissance. The research covers various aspects of medieval culture, especially philosophy, theology, history in general, history of the church, history of law, literature, arts and sciences. The Institute strives to promote the understanding of Western culture through the publication of original texts in translation and of academic research.

History

Scholars from Sophia University, in connection with researchers of medieval thought from other universities in the Kanto area, in 1956 established an "Office for research in medieval philosophy," attached to the Faculty of Humanities at Sophia University, as a supra-regional center of research in this field. In 1976, the research office was upgraded to Sophia University's "Institute of Medieval Thought," with the purpose to carry out advanced research in the thought and culture of the European middle ages. The Institute which at present has a staff of 10 institute fellows, 2 visiting fellow, and 10 visiting researchers, serves the academic community and societies related to medieval studies.

Principal activities

- The Institute plans and publishes translations of texts sourced from medieval times and academic research studies.
- The Institute collects books and treatises, and makes them available for researchers and students to browse and borrow. (The specialized library houses approximately 60,000 volumes, including magazines.)
- The Institute sponsors lectures by visiting scholars and organizes study circles for researchers and students.

Linguistic Institute for International Communication



Mission

Eversince it was established in 1978, the Linguistic Institute for International Communication has been engaged in a variety of research projects relating to all aspects of language, and has grown steadily with the purpose of deepening international understanding and facilitating cultural exchange between the East and the West. Currently, over 60 personnel including honorary members are engaged in joint research, and are striving to advance academic exchange and research through workshops, invitation of researchers from inside and outside Japan, and hosting of lectures. The Institute has two affiliated research organizations; the Research Center for Communication Disorders and the Phonetics Laboratory. The research areas that the Institute covers include the following: the theoretical investigation of issues related to the universal and particular aspects of languages, empirical exploration of foreign language learning and instruction, the development of teaching methods and materials, studies of the social and cultural aspects of language, cognitive-scientific and biolinguistic approaches to the study of human language, research into speech and language disorders and their treatment, scientific studies of the sounds of language, etc.

Principal Activities

- Research Project : 8 / Sponsored Research : 1
- Publications The institute has been releasing its findings through the publication of a number of journals and research reports, including the annual journal *Sophia Linguistica*, all of whose abstracts can be accessed online. In addition, the Phonetic Laboratory and Sophia University Research Center for Communication Disorder have issued their working papers once every two years, respectively.
- Hosting linguistics symposia, seminars and special lectures To promote understanding in the field of language studies, the Institute hosts symposia, seminars and workshops, to which a number of distinguished scholars have been invited from within Japan and overseas.

Institute of Comparative Culture



Mission

The Institute of Comparative Culture (ICC) strides to promote and support the interdisciplinary research of its members across a range of fields in the social science, humanities, business studies and economics. The institute further supports its members in building collaborative projects with researchers outside Sophia and in promoting the university's international reputation for research excellence. The specialisations of ICC members include anthropology, sociology, politics, business, economics, history, literature, and art history, with a strong focus on East Asia and the region's global connections. ICC's research activities and public events are mostly conducted in English.

Principal Activities

The principal activity of the ICC is supporting the collaborative research projects of its members. Current projects include Sophia Food Studies-Mobilities, Sustainability and Ethics; A History of Sophia University; Refugees and Migrants in Tokyo; Feminism and Female Empowerment in the 21st-Century Academy; Network Studies; Exploring a Japanese Fishing Village Through Art; and Multiple Voices in Japanese Literature, 1989-2019. The ICC also sponsors symposia and public lectures organised by ICC members and their research partners from across the globe.

Other activities

- Assisting visit scholars working with our faculty by providing access to Sophia's research facilities.
- Publishing research by our members and visiting scholars.
- Supporting members with grant applications and administration.

European Institute



Mission

The European Institute, officially established in 2007, grew out of the former Germanic Cultural Research Institute, merging with the Institute of Spanish Studies in 2009, and has thus stretched its research scope to the society and culture of the whole European continent. Now reorganized into four study sections", politics, economy and society", art and culture", language and history", the Institute is active in promoting research projects both on its own and jointly with other organizations.

Principal activities

- Organizing public lectures and symposia by prominent scholars from around the globe (Recent event include: the Sophia Symposium "Aktuelle Situation von der Regierung Scholz", and Lecture "Когда говорят пушки...Донецкая рана Украины глазами культуры", and Lecture "Literature and Adaptation".
- Publishing "Sophia Journal of European Studies"(available online) and "Sophia European Studies Series" which feature reports of research projects and symposia organized by the Institute.
- Collection and library service of books, written materials and periodicals related to European studies (The library is composed of German, Swiss, Austrian, European, Spanish and Portuguese sections).
- Serving as the EU information Centre (EUI) which provides a wide range of EU official periodicals and documents and participates in Japan-EU Friendship Week.

Institute of American and Canadian Studies



Mission

This Institute is one of the leading institutes in Japan conducting research on issues related to the history, societies and cultures of the United States and Canada. The Institute conducts interdisciplinary research on the United States and Canada; it currently has 12 full members, who come from several disciplinary areas. The Institute is well-known in Japan and overseas as one of Japan's major research institutes in this field.

Principal activities

- The Institute organizes and sponsors symposia, lectures and meetings of research groups.
- In liaison with Japanese and American associations (including the Organization of American Historians, the Japan-U.S. Educational Commission, American Studies Association, the University of Tokyo and other domestic institutions), the Institute promotes various research and academic exchange activities.
- As part of its work to train younger scholars, the Institute organizes regular colloquia, hosts visiting scholars, and provides a research environment to encourage academic exchange.
- The Institute maintains a library on American-Canadian studies and makes its collections available to researchers.
- The Institute publishes a journal, the *Journal of American and Canadian Studies*.

Institute of Media, Culture and Journalism



Mission

In this modern society marked by shifts toward advanced, widespread information utilization and globalization, Sophia University carries out research based on our guiding principles in the fields of media, culture and journalism in response to societal changes while forming research centers within the University that boast far-reaching, vigorous information communication functionality. By engaging in cooperative efforts with on- and off-campus researchers, media representatives, government agencies and so forth, we are cultivating venues for international exchange of information with media communication researchers and others within Japan and abroad.

Planned principle activities

- (1) Implementation and administration of various research projects, with specific themes as follows: •Media and journalism ethics, freedom of expression.
- The effects of various forms of mass media on awareness and formation of public opinion.
- Characteristics of digital media's journalistic functions.
- Company targets and the present-day general public.
- Potential for global spread of Japanese-style entertainment.
- The general public's utilization of media and the entertainment industry (We will develop research projects in collaboration with currently active journalists and promote international research activities with overseas researchers.)
- (2) Journal publication: released once per year (publication on the Internet and via digital and print media).
- (3) Research conferences : we plan to host approximately three per year.
- (4) Symposium: Tokyo Documentary Film Festival Symposium.

Institute of Asian, African, and Middle Eastern Studies



Mission

The Institute was established in April 1982, drawing inspiration from Sophia University's founding principles, which aimed to promote East-West cultural exchange while upholding Christian humanism. Initially focused on regional studies pertaining to Southeast Asia, South Asia, and the Middle East, the Institute expanded its research areas in 2014 to include Sub-Saharan Africa, and in 2019 to encompass East Asia as well. The Institute's primary objective is to conduct comprehensive research and analysis of socio-cultural phenomena associated with Asia, the Middle East, and Africa. It aims to go beyond traditional disciplinary boundaries and national borders, exploring contemporary socio-cultural phenomena, political dynamics, and economic challenges. To achieve this, the Institute delves into the traditional cultures, histories, religions, and lifestyles of the target regions. By adopting a multidisciplinary and longitudinal approach, the Institute seeks to promote regional studies across various disciplines and historical periods, ultimately fostering mutual understanding within the global community.

Principal activities

The Institute conducts regional studies of Asia, the Middle East, and Africa, with a primary focus on four research themes. Our research outcomes are applied to enhance the educational environment within our university. Furthermore, we actively contribute to society by organizing a range of events such as symposiums, lectures, and research workshops, where we share knowledge and insights with a broader audience.

- Comparative Studies on Globalization in Asia, the Middle East and Africa
- Studies on Cultural Heritage
- Comparative Studies on the Historical Development and Nationalism in Asia, the Middle-East, and Africa
- Research on Inter-religious Dialogue and Peace Building

Institute for Studies of the Global Environment



Mission

The Institute for Studies of the Global Environment grew out of the Earth Environment Law Research Center that was established in the Faculty of Law in 1994. In 1999, the Institute was launched to undertake academic research into global environmental issues related to the humanities, society, and natural science fields. In 1999, the Institute was launched to undertake academic research in global environmental issues, including humanities and social science fields. Teaching personnel of faculties of economics, science and technology, and other fields are members of the staff, which also includes staff from the Graduate School of Global Environmental Studies, established in 2005.

Representative activities

- (1) Academic research on global environmental issues
- (2) Educational activity conducted in collaboration with domestic and overseas institutions (collaborative lectures)
- (3) Enlightenment activity related to environmental issues (To co-organize various kinds of open research seminars and symposiums on global environment issues)

Principal Activities

- The institute collaborates with local governments and others and conducts research on Sado Island and Amami-Oshima Island on the conservation of the natural environment, energy policy, promotion of the SDGs, and balancing environmental conservation and tourism promotion.
- Research on population dynamics and sustainable urban development.Challenge toward solving world water problems through trans-disciplinary studies.
- The institute started a research project "Trans-disciplinary and Trans-national Research Program for Achieving Regional Sustainable Development Goals (SDGs) through River Basin Environment Conservation and Management" in 2016, which was supported by the Ministry of Education, Culture, Sports, Science and Technology as a "Private University Research Branding Project". The institute is currently implementing a successor project called " Trans-disciplinary Undertaking for Achieving SDGs -Focus on Water-Energy-Urban-Rural Nexus".

Institute of Islamic Area Studies



Mission

The Institute of Islamic Area Studies (SIAS) aims to promote the coordination and revitalization of Islam-related research at Sophia University, to contribute to the promotion of Islamic area studies in Japan, and to further promote the recognition and development of such studies in the world. Moreover, through the study of Islam at the Catholic University, we will explore ways that lead to the construction of a harmonious world in which the various religions coexist. Here, Islamic area studies refer to studies that address various Islam-related phenomena that occur in various parts of the world and attempt to consider them from a broad perspective that transcends time and region, while emphasizing methods of area studies that do not neglect the individuality of each case. This endeavor began in 1997, when Sophia University became one of the hubs of the nationwide "Islamic Area Studies" project funded by a Grant-in-Aid for Scientific Research (KAKENHI). A succeeding project was launched in 2006, and the "Center for Islamic Studies" was established within the Institute of Asian Cultures. In 2010, the Center became an independent organization with a time-limited research division. In 2022, it was finally established as a permanent research institute with a new name.

Principal Activities

We will develop highly problem-oriented joint research projects and publish SIAS Occasional Papers and SIAS Lectures aimed at forming an academic journal in the future. Our achievements will also be shared with students and non-professionals through lectures, symposia, and other events, as well as through the publication of the SIAS Lectures. In academic year 2023, as in 2022, SIAS was awarded an academic research promotion fund by the Promotion and Mutual Aid Corporation for Private Schools of Japan for the joint research project "Research on the Dynamics of the Reconstruction of Publicness in Contemporary Islam," which will be positioned as our core activity of this year.

Affiliated Research Organizations



Kirishitan Bunko Library



Mission

This Institute was established by the late Father Johannes Laures on February 5, 1939, the anniversary of the martyrdom of 26 Japanese saints, for the purpose of research on the history of Christian missions in Japan, cultural exchange between Japan and Europe in conjunction with missionary work, and for widerange diffusion of such knowledge and results.

Activities

Kirishitan Bunko is a world-famous center for the collection, study, and publication of materials on early East-West relations and Christian missionary activities in Japan and Asia. The Kirishitan Bunko collection includes about 15,900 volumes, including books, documents, maps, materials published in Europe in the 16th and 17th centuries, Roman Catholic Church publications from the Meiji period, Petitjean editions, and other related materials. In recent years a Japanese government grant has provided funding for the release of an internet version of the third edition of "Kirishitan Bunko" bibliography and a virtual library of the Kirishitan Bunko Library rare book collection (Laures Kirishitan Bunko Rare Book Database and Virtual Library).



Sophia Asia Center for Research and Human Development



Mission

The Sophia Asia Center for Research and Human Development deals with (nearby) areas in Asia, and there, by forging bonds of amity with local people it conducts activities as the Sophia Mission (activities of international service). The institute has been serving in Cambodia, and it has been involved in tasks that do not ignore people in distress. By displaying as its axiom of global service the fact that the conservation and restoration of Angkor Wat should be carried out by the Cambodians for the Cambodians, the institute has since 1991 created a curriculum at the site of the monuments, and for the past 33 years it has been involved in human resource development at the site.

Activities

1) The Hub of our Human Resource Development: We went to Cambodia in the midst of the civil war and in 1996 we have established a center focusing on research and human resource development at the site, which happened to be the only such center in Japan. We then involved ourselves in the development of human resources among the local people, and assisted the Cambodians in reclaiming their courage and hope. We have conducted each summer training sessions for students of the faculties of Archaeology and Architecture of the Royal University of Fine Arts in Phnom Penh, at the site of the Banteay Kdei monument and the Western Causeway of Angkor Wat. As of now 18 students have acquired degrees at our university's graduate school (with 11 obtaining master's degrees and 7 obtaining doctoral degrees).

2) The Hub of our International Exchange Activities with Countries of Asia: Every year in summer 'Tree Shade' lectures are held as a student exchange activity between Japan and Cambodia, and our 'Mekong Cultural Heritage Project Related to 5 Nations of Southeast Asia' of 2014, began anew in 2017 as a 'Project for Exchanges Concerning Focal Points, with reference to the Cultural Heritage in the 10 nations of ASEAN'. Here we convened experts associated with the conservation and restoration of cultural heritage from the 10 nations of ASEAN, and organized workshops to discuss the preservation and renovation of their cultural assets.

3) Exchanges with the Local People at the site of the Monuments: From 2011, we established the 'Sophia Angkor Center for Cultural Heritage Education' at the site of the Banteay Kdei monument. At this facility, every year in summer, site excursions, visits, and slide projections of cultural heritage are conducted for the elementary and middle school students of the vicinity, in order to enable them to get familiar with the Angkor Wat ruins.



Institute of Grief Care



History

The Institute of Grief Care was established as Japan's first institute dealing with this subject in April 2009 in Amagasaki City, Hyogo Prefecture, in April 2010 it becomes an institution of Sophia University. The Institute's activities include professional training for grief care counselors. The Institute's activities began following a major accident on the Fukuchiyama rail line. The activities of the institute have been supported by a grant from the JR WEST Relief Foundation, and from 2014, the Institute receives the contribution from other support groups.

Activities

- Research in Grief Care and Spiritual Care
- Professional training course for Grief Care practitioners
- Public Lecture series (2series a year)
- Activities commissioned by local governments
- Publications, including Grief Care a journal of the institute



Sophia University Institute of Bioethics



Mission

The Institute of Bioethics (SUIBE) was established in April 2010 based on the Sophia University philosophy, namely "Christian humanism" and "human dignity." SUIBE is to develop and deepen research on bioethics, integrating the academic fields of the human sciences, social sciences and natural sciences. The study of bioethics was started in the U.S.A. The field developed in response to the rapid development of advanced medical technology and has now come to focus on problems in research on the human embryo, human substances, and genome biology. However, bioethics also includes the study of more fundamental ethical concerns related to the meaning of human life. SUIBE considers not only the problems of medical science research and medical ethics, such issues as mental health, reproductive technology, terminal care, and organ transplants, but also medical welfare issues such as access to health care, protection and care of children, the aged, and the disabled.

Activities

SUIBE holds a public symposium several times a year, and sponsors research meetings for its members, and works with Japanese and international partners to publish research results and to make those results available to the general public, and to offer advice for policy makers.



Monumenta Nipponica



About the Journal

Monumenta Nipponica is one of the leading Japan studies journals in the world. In the first quarter of 2023, alone, people in over 120 countries accessed Monumenta Nipponica's peer-reviewed articles and book reviews more than 48,000 times. The journal was founded in 1938 by Sophia economics professor Johannes B. Kraus, S.J. (1892-1946), and it continues to be a vibrant forum for the exchange of ideas. The journal welcomes contributions representing diverse disciplinary perspectives in the humanities and dealing with all periods, from ancient to modern times, and also maintains its commitment to providing a platform for translations of Japanese literary and historical sources and texts. For an in-depth history of MN, see Monumenta Nipponica: Eighty Years and Counting, available as a PDF on the MN website.

Activities

Published twice a year, Monumenta Nipponica carries original scholarly contributions on Japanese history, literature, art, religion, thought, and society, as well as translations of important Japanese literary texts and historical sources. Each issue carries three articles and as many as twenty authoritative reviews of recent books on Japan. From volume 60 (2005), the journal has been available online through Project MUSE. All back issues are available online, with a five-year moving wall, through JSTOR. The journal is indexed by EBSCO, Arts and Humanities Citation Index, CNKI Scholar, ERIH PLUS, Index to the Study of Religions Online, and Scopus.



Semiconductor Research Institute



Mission

The institute was established on October 1, 2009 as one of the centennial projects of Sophia University, and in commemoration of the outstanding achievements of Dr. Jun-ichi Nishizawa. The institute will lead research in related fields of semiconductor electronics, basic electronics, and basic physical properties and thereby fulfill its mission of contributing to the academic and cultural development in Japan.

Activities

The Semiconductor Research Institute aims to develop innovative next-generation semiconductor technologies that can contribute to the construction of a sustainable society, mainly through the activity of semiconductor researchers in the Faculty of Science and Technology of Sophia University. Currently, utilizing various semiconductor processing equipment installed in a clean room, the Institute is collaborating with two timed research divisions of the Nanotechnology Research Center (Director: Associate Professor Rie Togashi) on a joint research project with a company, "Research on Laser Devices with Nanocolumns," and the Photonics Research Center (Director: Prof. Akihiko Kikuchi) on the JST CREST program "Topological State Creation and Novel Property Development Based on Artificial Graphene".

The center also plays a role as a joint research center to establish an efficient research collaboration between semiconductor researchers at Sophia University and other universities.



Sophia Institute of International Relations



Mission

Launched in 2015, Sophia Institute of International Relations (SIIR) seeks to contribute to peace and development in our globalizing world through advancement of research and education in the field of international relations.

Activities

SIIR undertakes research projects on a broad range of issues in international relations, particularly in the fields of security and international political economy. For this purpose, SIIR seeks to collaborate with research institutes and researchers throughout Japan and overseas. Ongoing research projects at SIIR include "Japan and the Crisis of Liberal International Order" and "Human Security and Peace-Building." SIIR also holds a number of symposia, seminars, and lectures on international relations. The details are listed below:

- Research seminars
- Symposia, seminars, and lectures
- Publication of books, working papers, and other research outputs



Institute of Inclusive Community



Mission

One of the Universal Apostolic Preferences of the Society of Jesus approved by the Pope, "Walking with the poor, the people excluded from the world, the people whose human dignity is violated", based on such philosophy, our goal is to clarify the issues for those people experiencing inequity and disseminate solutions to those issues to the world. This aim is consistent with the basis of the SDGs "No one left behind" adopted by the United Nations. This research institute is cooperated with Aioi Nissay Dowa Insurance Co., Ltd., to be a new type of industry-academia collaboration striving for social implementation based on the results of our joint effort.

Activities

- International comparative study of sports and physical activity on people with disability
- Support for victims of major disasters
- Psycho-social support for Japanese children and their families living in developing countries.



Sophia Island Sustainability Institute (ISI)



Mission

Sophia Island Sustainability Institute was established on July 1, 2022, for the purpose to harness the transdisciplinary expertise within Sophia University alongside that of international partners to enable valuable research and related activities to be undertaken in collaboration with island partners in Japan and overseas that supports island sustainability for the benefit of all, from ancient to modern times, and also maintains its commitment to providing a platform for translations of Japanese literary and historical sources and texts. For an in-depth history of MN, see Monumenta Nipponica: Eighty Years and Counting, available as a PDF on the MN website.

Activities

Specifically, we conduct research activities with the following goals.

- 1) Establish a hub for island sustainability research within Sophia University that is focused on both Japan's islands and overseas island territories, identifying valuable synergies and sharing learnings
- 2) Develop an ongoing calendar of educational activities
- 3) Create opportunities for educational exchange and research collaborations between Japan and other island nations and territories, and between Sophia University and other organizations and institutions
- 4) Build a domestic and international network of colleagues and partners for research and project collaborations that includes academic institutions and other organizations engaged in island sustainability/related research
- 5) Create project opportunities that financially support the Institute



Human Resources Center for International Cooperation



Mission

The Human Resources Center for International Cooperation was established in July 2015 for the purpose of developing the human resources that would be able to contribute to the global society embodying the university's educational spirit "For Others, With Others."

Activities

Sophia University is committed to helping students make leading contributions to the international community. To that end, the university has established close relationships with the United Nations (UN) and various international aid organizations, including United Nations World Food Programme (WFP), United Nations Development Programme (UNDP), Office of the United Nations High Commissioner for Refugees (UNHCR), Asian Development Bank (ADB), African Development Bank (AfDB), and Japan International Cooperation Agency (JICA), and offered training and educational programs toward the objective of better understanding international cooperation. Working closely with these agencies as well as our university academic staff members, the Center strives to support students who are interested in pursuing international careers.



Sophia Institute for Human Security (SIHS)



Mission

Sophia Institute for Human Security (SIHS) was established for the purpose of realizing human security through social science research. SIHS was launched in 2017, when Sophia University's application for "Private University Research Branding Project" by MEXT was adopted. Since 2022, the activities of the institute have been supported by ORION Foundation and SIHS has become an affiliated research organization.

Activities

SIHS positions poverty, environment, health and medical care, immigrants and refugees, peacebuilding as five important issues of human security in international society. We will work on the realization of human security through academic research by becoming an international center of excellence that designs effective policies and institutions to solve these problems using social science research methods. Our research division consists of five units: poverty, environment, health and medical care, immigrants and refugees, and peace-building. And, the developing areas of Africa, Southeast Asia and South Asia are our main study fields. The following are basic policy of SIHS in executing project:

- 1) To tackle realization of human security through research results of social science, and
- 2) to promote research based on local circumstances and problems while collaborating with local researchers.

Project Research Division (As of September 2023)

Nanotechnology Research Center



Challenging the Possibility of Three Primary Color Light-Emitting Devices Based on Nanocolumns and Nanocrystals

The Nanotechnology Research Center was established in April 2008 as Sophia University's core organization for nanotechnology research. Its present activity centers on collaborative projects with companies. This center operates to study various subjects based on GaN nanocolumns and related nanocrystals, which were pioneered by the project team member, that is, aiming at overcoming the challenging issues of nitride semiconductor emission devices, developing the fundamental technology of three primary colors emitting devices, exploring novel solid state physics based on nanocrystals, and finally clarifying the physics of nanocrystal effect of nanocolumns. Recently, blue light-emitting diodes (LEDs) attracted attention because they led bright and energy-saving white light sources. This research project aims the development of base technology of three primary colors integrated laser/ LEDs with the highly functional and ultrafine structures, in which red, green, and blue laser / LEDs are monolithically prepared on the same crystal, was achieved. This new generation light emitting devices, which provide a micro size full color light spot, exerts a great impact on the full-color application field by innovating display systems of laser / LED projection displays, retina scanning personal displays, and so on.

Photonics Research Center



Creating new optical devices with extreme nanofabrication technology and the latest theory

Sophia Photonics Research Center has been established in 2019 as an activity base of research project regarding to "Creating Topological States and Innovative Functionality Based on Artificial Graphenes" (2018-2023) which is a CREST program of Japan Science and Technology Agency (JST). The main subject of this project is experimentally demonstrate the "topological phonic phenomena" at room temperature in visible light region and develop new optical device technology based on world top-level semiconductor nanostructure fabrication technology of Sophia University. As an example of topological photonic phenomena called "topological edge transport", light can propagate an interface between two different type insulators which cannot transfer the light. In this state, the light became very robust for structural disordering and shows one directional propagation. At the Photonics Research Center, we are conducting research activities to develop innovative technologies for realizing new optical devices utilizing such novel physical phenomena.

PICK UP Initiatives Related to SDGs & Sustainability

Office of Sophia Sustainability Promotion (Hereafter OSSP) was established in July 2021 by Sophia School Corporation operating Sophia University to further promote initiatives to fulfill its social responsibility. Sophia University has engaged actively in research, education and social contribution activities and initiatives that contribute to sustainability promotion represented by SDGs. OSSP plays a role in overall control, grasps a complete view of the various activities, disseminates information in and outside the University, enhances collaboration with external organizations for the existing activities, and aims at promoting new activities. OSSP is hiring student staff members to create new values from interdisciplinary exchange of ideas among faculty, staff and students. At present, OSSP has three major teams, namely Campus Improvement team, Planning and Implementation team, Information Dissemination team, actively participating in tasks of public relations, information collection, institutional design as well as supporting relevant offices, with young, flexible, and inventive mind.



PICK UP International Cooperation Activities in the Field of Research



MIRAI 2.0 is a collaboration between 9 Japanese universities and 11 Swedish universities. The primary purpose of this collaboration is to advance long-term research collaborations and promote Sweden and Japan as leading nations of global large-scale research infrastructure. Scholars, professionals, students, and administrators exchange innovative ideas and create international leading knowledge together through scientific workshops and seminars in the fields of Ageing, Artificial Intelligence, Innovation and Entrepreneurship, Materials Science, and Sustainability. The Research & Innovation weeks is one of the main engaged collaborative research activities of MIRAI 2.0.

The Strategic Alliance of Catholic Research Universities (SACRU) is a global network of Catholic universities dedicated to research and teaching excellence, engagement and global collaboration informed by Catholic social teaching. Advancing world leading knowledge and higher education for the common good through SACRU collaborations will be the mission of SACRU. The vision of SACRU will be to reinforce the link between faith and reason in the digital age, enhance research for the common good, promote global education, develop digital transformation, accelerate interdisciplinarity in education and research, and contribute to knowledge and technological transfer through various global academic engagement activities and initiatives.



Research and Development Center for CAE technologies applied for next-generation transport aircraft design



Aiming to realize virtual testing in aircraft design

This center is engaged in activities aimed at the research and development of Computer Aided Engineering (CAE) technologies which can contribute to the design of commercial aircraft. Our main objective is to smoothly carry out outsourced work from Tohoku University related to the Development of Aircraft Design Technologies for Ideal Composite Structures, a New Energy and Industrial Technology Development Organization (NEDO) research project. More specifically, the following two types of research topics are to be conducted. Development of Design Simulator for Aircraft Structures using thermoplastic CFRP Development of Virtual Testing Technologies for thermoplastic CFR Structures Based on computational mechanics and composite material engineering, our research and development includes various engineering analyses using numerical simulation methods such as the Finite Element Method (FEM), as well as validation experiments and software development. The results of this research promise to contribute to the development of Japan's aerospace industry. Furthermore, by establishing subjects of study in relation to the content of work and by giving research guidance to our students, it is expected that in the future we will be able to produce excellent engineers who can play an active part in both the aerospace and manufacturing industries

Research Themes of Sophia Faculty (As of April 2023)

For more information
Education and Research Information Database



FACULTY OF THEOLOGY

- Department of Theology**
- HAI DAR Juan Professor**
Contemporary Jewish Philosophy
- HARA Keiko Professor**
Practical Theology, Missiology, Christian Humanism
- KATAYAMA Haruhi Professor**
Literature and Christianity, Christian Spirituality
- KAWANAKA Hitoshi Professor**
Fundamental theology, Ignatian spirituality
- KOO Mark Chung-mo Professor**
Christian Liturgy and Sacramental Theology
- KOYAMA Hideyuki Professor**
Peace Studies, Research in Ethnic Relations, Catholic Social Teaching
- MITSUNOBU Ichiro Professor**
Theological Anthropology, Eschatology, Mariology
- MORI Hiroko Professor**
Liturgical Music, Aesthetics of Christian Arts
- TAKEDA Nahomi Professor**
Practical theology, Christian faith and lifespan development
- TAKEUCHI Osamu Professor**
Bioethics as Narrative, Christian ethics
- SAKAI Yosuke Associate Professor**
Psychology of Religion Integration of Clinical Psychology and Christian Spirituality
- FIRMANSYAH Antonius Assistant Professor**
Sacramental Theology, Liturgical Theology, Pastoral Liturgy, Liturgical Spirituality
- TSUNODA Yuichi Assistant Professor**
Christology, Trinity, and Modern Shin Buddhist Thought
- MASUDA Ken Lecturer**※
Ecclesiology, Mariology, Sacramental Theology and Ecumenism
- TANAKA Kenzo Lecturer**※
New Testament Studies

FACULTY OF HUMANITIES

- Faculty of Humanities**
- NISHIOKA Yoshifumi Professor by Special Appointment**
History of Japanese cultural properties
- Department of Philosophy**
- NAGAMACHI Yuji Professor**
Medieval philosophy, Heidegger, Religious Philosophy, The History of Christian Thought
- OGINO Hiroyuki Professor**
Ancient Greek Philosophy, Patristic Studies
- SATO Naoko Professor**
Medieval Philosophy, Religious Philosophy, Metaphysics
- TERADA Toshiro Professor**
Modern Practical Philosophy, Clinical Philosophy
- SUZUKI Nobukuni Professor**
Philosophical Anthropology, Philosophy as a Way of Life, Social Epistemology
- KAWAGUCHI Shigeo Associate Professor**
Transcendental Philosophy, Phenomenology, Hermeneutics, Philosophy of History
- KUWAHARA Shunsuke Associate Professor**
Aesthetics, Philosophy of Art
- SUGIO Hajime Associate Professor**
Philosophy of Science, Modern Natural Philosophy, Mathematical Metaphysics

- Department of History**
- NAGATA Akifumi Professor**
Diplomatic History of Japan, Asian and Pacific International History
- KAWAMURA Shinzo Professor**
Early Modern Japanese History, Japanese Christian History, Church History
- SASAGAWA Yuji Professor**
History of Modern and Contemporary China, Social History of War
- NAKAZAWA Katsuaki Professor**
Medieval Japanese History, Hunting Cultural History
- HOJO Katsutaka Professor**
History of Environmental Culture in East Asia, Public History
- SAKANO Masanori Professor**
History of Early Modern France, Social history of religion in Early Modern Europe, Urban Cultural History
- NAKAGAWA Aki Associate Professor**
Ancient Roman History, Latin Epigraphy
- OKAWA Yuko Associate Professor**
Ancient Chinese History, Environmental History
- YAMAMOTO Naruo Associate Professor**
Medieval History, Music and Society, Church Institutions
- MORITA Naoko Associate Professor**
German Modern History, History of Emotions

- Department of Japanese Literature**
- SEMA Masayuki Professor**
Early Japanese Literature
- MOTOHIRO Yoko Professor**
Study of "Genji-monogatari"
- YAMAMOTO Akihiro Professor**
Study of "Waka"
- KIMURA Hiroshi Associate Professor**
Study of Modern Japanese Literature
- TAKUYA Fukui Assistant Professor**
Study of Modern Japanese Literature

※nontenured faculty member

- HATTORI Takashi Professor**
Modern Japanese and History of Modern Japanese Linguistics
- NAGAO Naoshige Professor**
Study on Chinese classical novels and Japanese works in Chinese (Kanbun)
- FUKUI Tatsuhiko Professor**
Study on Japanese works in Chinese
- Department of English Literature**
- IINO Tomoyuki Professor**
20th Century American Poetry, American Popular Music
- OTSUKA Juro Professor**
19th Century American Prose Writings
- IKEDA Makoto Professor**
English Philology, English Language Education, CLIL
- NAGATOMI Tomomi Professor**
19th Century British Literature and Culture
- MATSUMOTO Hogara Professor**
20th Century British Literature and Culture
- CHEETHAM Dominic Professor**
Children's Literature, Applied Linguistics
- YAMAGUCHI Kazuhiko Professor**
20th Century American Literature
- NISHI Takashi Associate Professor**
Shakespeare
- PINNER Richard Associate Professor**
Applied Linguistics
- SHIMOJO Keiko Associate Professor**
21st Century American Literature, Literary Theory
- TASHIMA Yuko Associate Professor**
19th Century American Literature
- STRAND Eric Associate Professor**
20th Century American Literature
- MACHIMOTO Akihiro Assistant Professor**
Intellectual History of Modern Britain

- Department of German Literature**
- DUPPEL Mechthild Professor**
Contemporary German Literature, Comparative Culture Studies
- MIWA Reiko Professor**
Contemporary German Drama and Theater
- NAKAI Sanayuki Professor**
Goethe, F. H. Jacobi, Literary thought in the history of German Literature
- NAKAMURA Asako Professor**
German lyrical poems in the 20th Century
- SATO Tomoyuki Professor**
German Romanticism
- ZEMSAUER Christian Professor**
Contemporary German Literature, Austrian Literature in the 20th Century
- KOMATSUBARA Yuri Professor**
Avant-garde movements of the early 20th Century spanning literature, performance and visual arts

- Department of French Literature**
- DESPREZ Michaël Professor**
History of European theater, from the 16th to the 17th century
- FUKUDA Kosuke Professor**
François Mauriac, French novels of the 20th century
- HAKATA Kaoru Professor**
19th century literature, music and representation
- NAGAI Atsuko Professor**
Julien Gracq, French novels of the 20th century
- OGURA Hirotsuka Professor**
Jean Racine and French literature of the 17th century
- PEYRON Bruno Professor**
Autobiography (Hervé Guibert), Information and Communication Technologies (ICT) in education
- JITTANI Soichiro Assistant Professor**
Zola and 19th century French literature and painting

- Department of Journalism**
- OTO Yoshihiro Professor**
Media Studies, Media and Social Change, Media Policy and Industry
- WATANABE Hisanori Professor**
Media Audience Research, Analysis of Public Opinion, Marketing
- MIZUSHIMA Hiroaki Professor**
Video Journalism, Digital Journalism, Documentary Studies
- ABE Ruri Professor**
International Communication, Sociology of Media
- SHIBANO Kyoko Professor**
Media Studies, Theory of Publishing Environment, Publishing History
- OKUYAMA Toshihiro Professor**
Journalism, Media Studies, Freedom of Information
- KUNIEDA Tomoki Associate Professor**
Public relations history, international public relations, crisis communication
- TAKAHASHI Naoharu Associate Professor**
Audio & Visual education theory, Media expression practice, Film & Video expression
- DSOUZA Arun Prakash Assistant Professor**
Secular Ethics in Media, formation of journalists & media professionals, religious journalism

FACULTY OF HUMAN SCIENCES

- Faculty of Human Sciences**
- SAWADA Minoru Professor**
Educational studies (curriculum and instruction)

- Department of Education**
- AIZAWA Shinichi Professor**
Comparative and Historical Sociology of Education, Social Research
- KOMATSU Taro Professor**
Education and International Development
- NASU Masahiro Professor**
Psychological Study on Competency Based Education
- SAKAI Akira Professor**
Sociology of Education, Clinical Sociology of Schooling
- SUGIMURA Miki Professor**
Comparative Education, International Education
- UENO Msamichi Professor**
Education and Schooling, Philosophy of Education
- YUKAWA Katsumi Professor**
Historical Study of Early Childhood Education in Japan
- MANZON Maria Associate Professor**
Comparative Education
- SUZUKI Hiroshi Associate Professor**
Philosophy of Education, Moral Education, Peace Education

- Department of Psychology**
- AGATSUMA Soh Professor**
Psychiatry, Psychoanalysis
- HIDAKA Souta Professor**
Cognitive Psychology, Perceptual Psychology, Experimental Psychology
- HIGUCHI Masataka Professor**
Social Psychology, Health Psychology
- HIROSE Eiko Professor**
Learning Psychology, Educational Psychology, Psychological Measurement
- MATSUDA Osamu Professor**
Geropsychology, Clinical Psychology
- OKADA Takashi Professor**
Physiological Psychology
- YOKOYAMA Kyoko Professor**
Clinical Psychology, Pediatric Psychology, Analytical Psychology
- YOSHIMURA Satoshi Professor**
Personality Psychology, Psychological Assessment, Psychoanalysis
- MOHRI Ibuki Associate Professor**
Clinical Psychology, Cognitive Behavior Therapy
- SAITO Atsuko Associate Professor**
Developmental Psychology, Evolutionary Psychology, Comparative Cognitive Science
- SAITO Azusa Associate Professor**
Clinical Psychology, Victim Support, Trauma
- NAGAHORI Kanako Assistant Professor by Special Appointment**
Clinical Psychology, Analytical Psychology, Group Psychotherapy
- KANO Tomoaki Assistant Professor by Special Appointment**
Clinical Psychology, Analytical Psychology

- Department of Sociology**
- FUJIMURA Masayuki Professor**
Sociology of Lifestyle, Sociology of Social Policy
- HAGA Manabu Professor**
Sociology of Religion, Sociology of Culture
- TABUCHI Rokuro Professor**
Sociology of Families, Life Course Studies, Aging Studies
- IMAI Jun Professor**
Comparative Employment Relations, Sociology of Labour, Inequalities
- NAKAZAWA Hideo Professor**
Urban and Regional Sociology, Environmental Sociology
- HOMMERICH Carola Professor**
Wellbeing, Social Stratification, Status Identification, Risk Society, Sustainability
- SARUYA Hiroe Associate Professor**
Political Sociology, Social Movements, Historical Sociology
- ISHII Yukari Associate Professor**
Sociology of Gender and Sexuality, Queer Theory, Identity Studies
- HOSOKI Ralph Ittonen Assistant Professor**
Global and Transnational Sociology, International Migration, Social Movements

- Department of Social Services**
- OKA Tomofumi Professor**
Social work with self-help groups, Self-help groups, Alcoholism
- OTSUKA Akira Professor**
Study on the community based care for persons with disabilities
- TAKAYAMA Eriko Professor**
Social Work in Health Care
- MARUYAMA Katsura Professor**
Social Policy, Social Security, Economics of Social Welfare
- KASAHARA Chie Professor**
Social work and disability, Inclusive research with people with learning disabilities
- SHINDO Kozue Associate Professor**
Social care for children, School social work, Youth with disabilities
- KABURAKI Natsuko Associate Professor**
Support for the needy, Poverty problem, Community welfare, Policies on cohesive society
- TAKASE Sachiko Associate Professor**
Social work for the elderly, Social gerontology
- HIRANO Hiroya Associate Professor**
Welfare Theory, Citizenship Studies, Welfare Sociology

Research Themes of Sophia Faculty (As of April 2023)

For more information
Education and Research Information Database



Department of Nursing

ISHIKAWA Fumiyo Professor
Support for patients with traumatic brain injury and their families

KUSAYANAGI Hiroko Professor
Research on child hospitalization environment

RYOHA Mihoko Professor
Management skills of Nurses or Public Health Nurses

SAKAI Shima Professor
Research on discharge planning and advance care planning

SHIMADA Marie Professor
Perinatal care, Support for childrearing

TSUKAMOTO Naoko Professor
Stress research of nurse by the behavioral science analysis

FUNAKI Yuka Associate Professor
Study on acquisition of fundamental nursing skills for nursing students.

KODAKA Megumi Associate Professor
The Family Support in the Early Intervention of Psychosis

MITSUGI Mari Associate Professor
Research as nursing praxis in cancer survivorship care within a unitary paradigm

OKAMOTO Nahoko Associate Professor
Peer Support Model for Needy-Life Independent-

SAYAMA Rie Associate Professor
Study on Culture and Childbirth

YOSHINO Yae Associate Professor
Human resource development in developing countries / MCH care for foreign residents in Japan/Evaluation and Modeling of COIL Program

ISHIDA Toru Assistant Professor
The Family Support in the Child Psychiatric Nursing

KATAGIRI Yukiko Assistant Professor
Support for nursing students with developmental disabilities

MATSUNAGA Mayumi Assistant Professor
Continuous interprofessional collaboration for women with gestational diabetes mellitus

MITSUTAKE Tomomi Assistant Professor
Study of sex education at home of a developmental child with disabilities a developmental child / person with disabilities

SHIN Woujung Assistant Professor
Nurse's decision-making support in Amyotrophic Lateral Sclerosis (ALS) Patients

TAMURA Namiko Assistant Professor
Structure of decision making of treatment place for cancer patients and families during the period of palliative care

TEZUKA Sonoe Assistant Professor
Child and family-centered care in the pediatric intensive care unit

EGUCHI Takako Assistant
Research on child and adolescent mental health

HAGARI Yukako Assistant
Study on Sexuality education in early childhood

HOJO Riko Assistant
Research on recovery for people with mental illness

KASE Ryutarō Assistant
Study of dehydration among nurse in healthcare facility

KONDO Chie Assistant
Study of sleep behaviors of twin infants and their parents

KUMAKURA Misato Assistant
Study on the meaning-making of cancer survivors after

MISHIMA Naoko Assistant
Assessing long-term impacts of a natural disaster on the health and well-being of elderly Behavior analysis of persons with dementia

NISHIKAWA Mizuki Assistant
Research on career development of nurses and organization development

TAKIGUCHI Yoko Assistant
Research on younger education behavior of mid-career nurses

TANAKA Natsuko Assistant
The study of terminal cancer home care

URA Sakiko Assistant
Research on discharge support for children with medical care

WATANABE Aya Assistant
Cultural Childbirth Practices and Experiences in Timor-Leste

YAMAGATA Hiro Assistant
Socialization support for patients with acquired brain injury

YAMAMURA Takeo Assistant
Chronic diseases of older people, Application of contemporary thought to nursing research

FACULTY OF LAW

Department of Law

ANZAI Akiko Professor
Civil Procedure

HABU Kaori Professor
Civil Law

ITO Yuji Professor
Corporate Law

ITO Wataru Professor
Criminal Law

OHASHI Mayumi Professor
Administrative Law

OKUDA Junichiro Professor
Philosophy of Law, Bioethics and Law

TAGASHIRA Shoichi Professor
Civil Procedure, Insolvency Law

TERUNUMA Ryoosuke Professor
Criminal Law

*nontenured faculty member

UEDA Kensuke Professor
Constitutional Law

UMEMURA Yu Professor
Business & Environmental Law

MIZOBUCHI Masaaki Associate Professor
Civil Law

ZENTO Akio Associate Professor
Civil Law

Department of International Legal Studies

DEGUCHI Koji Professor
Current topics on international contract and tort

ETO Junichi Professor
International Law

KANEHARA Atsuko Professor
State Responsibility, The Law of the Sea

KATO Kozo Professor
International and Comparative Political Economy

KOMADA Yasuto Professor
Intellectual Property

KUSUNOKI Shigeki Professor
Competition Law

MATSUMOTO Naoko Professor
European Legal History, German Law

MORISHITA Tetsuo Professor
International Business Law, Banking & Financial Law, Negotiation

NAGANO Hitomi Professor
Social Security Law

OKABE Midori Professor
International Relations, Regional Integration (mainly EU) studies, International Migration Studies

AZUMA Fumihiko Associate Professor
EU Law, Comparative Law

Department of Legal Studies of the Global Environment

ABE Kazufumi Professor
Constitutional Law

CHIKUSHI Keiichi Professor
Environmental Law, Administrative Law

HORIGUCHI Takeo Professor
International Law, International Environmental Law

ITO Hidetoshi Professor
Civil Law

KAWASE Tsuyoshi Professor
International Economic Law

KITAMURA Yoshinobu Professor
Environmental Law, Regulatory Studies, Local Government Law

KUWAHARA Yushin Professor
Environmental Law

MIURA Mari Professor
Contemporary Japanese Politics, Comparative Welfare States, Gender and Politics

TOMINAGA Koichi Professor
Employment / Labor Law

FACULTY OF ECONOMICS

Department of Economics

AOKI Ken Professor
Industrial Organization, Industrial Organization of Health Care Markets

DEJIMA Takahisa Professor
Labor Economics: Applied Econometric Analysis of the Japanese Wage Structure, Employment System, and Fertility Rate

HORIE Tetsuya Professor
Environmental Economics, Natural Resource Economics, Ecological Economics, Agricultural Economics

KAWANISHI Satoshi Professor
Study of vitalization of organizations and local economy by applying game theory and behavioral economics

KONDO Hiroki Professor
Public economics and finance; New economic geography; Macroeconomics

KURUSHIMA Aiko Professor
Stochastic optimization, optimal stopping, decision making under uncertainty

MINAMIHASHI Naoaki Professor
Financial Intermediation, Industrial Organization, Japanese Economy

PUTHENKALAM John Joseph Professor
Economic Growth and Sustainable Development of Asia and Developing Countries

TAKEDA Yosuke Professor
Macroeconomics, Monetary Policy, Household Finance, Political Economy, Optimal Taxation, Innovation

YOMOGIDA Morihito Professor
International Economics, International Trade, Foreign Direct Investment, Trade and the Environment, Commercial Policy

NAKAMURA Sayaka Professor
Applied Microeconomics, Health Economics

KAMAGA Kohei Professor
Social Choice Theory, Welfare Economics, Public Economics

HIGUCHI Yuki Associate Professor
Development Economics, Applied Econometrics

NAKAZATO Toru Associate Professor
Macroeconomics

TAKEUCHI Asuka Associate Professor
Econometrics, Women's Employment

KURATA Masamitsu Associate Professor
Development Economics, Agricultural Economics, Applied Econometrics

SCHLEGL Matthias Associate Professor
Macroeconomics, International Finance, Monetary Economics

TAKAHASHI Masaki Assistant Professor
Health Economics, Public Economics

NAGAE Akira Assistant Professor
Applied Microeconomics, Labor Economics, Research on Economy and Disability

Department of Management

AMIKURA Hisanaga Professor
Creating and Sustaining Competitive Advantages through Organizational Capabilities Development

ARAI Noriko Professor
Community Marketing

HOSOGAYA Nobuko Professor
Human Resource Management and Career Development

ISHII Masahiro Professor
Asset pricing and Risk Management

JOHNS Adam Professor
Cultural and creative industries, Brand authenticity, Place branding

KOSAKA Genjiro Professor
New Product Development and Organization Design

NISHIZAWA Shigeru Professor
Financial Reporting Analysis and International Taxation of Global Companies

SUGITANI Yoko Professor
Brand management and consumer psychology

TAKENOUCHI Hideyuki Professor
Foreign Direct Investment of Japanese Firms and Interfirm Relationships

TOGAWA Taku Associate Professor
Marketing strategy and consumer behavior

WAKABAYASHI Toshiaki Associate Professor
Management accounting, and governmental and nonprofit accounting

KAPTURKIEWICZ Agata Assistant Professor
Entrepreneurship and Innovation, Entrepreneurial Ecosystems, Organization Theory, Comparative Research

TAKINISHI Atsuko Assistant Professor
The Nature of Accounting Standards and Capital Markets

NAKAGAWA Mariko Assistant Professor
Strategic management and organisational theories

FACULTY OF FOREIGN STUDIES

Department of English Studies

DEGUCHI Makiko Professor
Cultural Psychology, Psychology of Social Oppression

FAIRBROTHER Lisa Professor
Intercultural Interaction, Sociolinguistics

IJIMA Mariko Professor
Global History, History of Japanese Migration, Asia-Pacific Studies

ISHII Noriko Professor
U.S. History, American Women's History, Transnational Women's History

IZUMI Shinichi Professor
Second Language Acquisition, English Language Teaching

KITAHARA Mafuyu Professor
Phonetics, Phonology, Cognitive Science

OGAWA Kimiyo Professor
English Literature, Film Studies

OKIMOTO Kenneth Professor
American Media and Film

OSHIO Kazuto Professor
History (Environment / Public policy)

OTSUKA Yoko Professor
Syntactic Theory, Austronesian Linguistics, Polynesian Languages

SAKAMOTO Mitsuyo Professor
Bilingual & Heritage Language Education, Critical Applied Linguistics, Language Policy

TOGO Takanori Professor
Shakespeare

WILLIAMS John Professor
Film Production, Arts Practice in Education and Regional Regeneration, Adaptation Studies

FURUKAWA Gavin Associate Professor
Sociolinguistics, Discourse Analysis, Language Ideology

KAUFMAN Marc Associate Professor
Contemporary Literature, Creative Writing

MACINTYRE Robert Associate Professor
Academic Writing, Metadiscourse, Reflective practice in teacher education

WILLIAMS Laurence Associate Professor
English Literature (eighteenth and nineteenth centuries), Travel writing, History of British Empire

YAMANAKA Mishio Assistant Professor
U.S. History, African American history, Southern history

MORRELL Audrey Lecturer*
Nature and Human-Animal Studies

STRUWIG Dillon Lecturer*
Coleridge (Philosophy), British Intellectual History, English Literature (17th to 19th centuries)

YOUNG David Lecturer*
Disability and difference in language education, inclusive education

Department of German Studies

ASAMI Shogo Professor
Bioethics, German Philosophy

KAWASAKI Takeshi Professor
German Politics: Party Politics and MPs in German "Bundestag"

KIMURA Goro Christoph Professor
Sociology, Sociolinguistics

LIPSKY Angela Professor
German as a Foreign Language, Applied Linguistics

OPHULS-KASHIMA Reinold Professor
Modern German Culture (Discourse Analysis)

TAKAHASHI Ryoosuke Professor
Theoretical Linguistics (Lexical Semantics, Morphology)

SATO Yukiko Assistant Professor
German media analysis, Comparative media studies, Educational technology

YANAGITA Nancy Lecturer*
German as a Foreign Language

Department of French Studies

COUCHOT Hervé Professor
French Philosophy and Modern Aesthetics

HARADA Sanae Professor
French as a Foreign Language, Applied Linguistics

IWASAKI Erina Professor
North African Socio-economic Studies

TAKAHASHI Akeo Professor
French Revolution, History in Modern France, French Colonialism

TUCHAIS Simon Professor
French-Japanese Contrastive Linguistics

KOJIMA Machiko Associate Professor
French Diplomacy, International Security

MAKI Yoko Associate Professor
Sociology of the Family, Social Policy

MONFORT Brieuc Associate Professor
Macroeconomics, Economic Policy, International Trade and International Finance

SERVERIN Simon Associate Professor
Constitutional Theory and Political Thought

Department of Hispanic Studies

HASEGAWA Nina Professor
19th Century Mexican Cordel Literature and Japan-Latin America Comparative Literature

HATAYA Noriko Professor
Social Movements and Solidarity Economy in Latin America

MATSUBARA Noriko Professor
Art History of Early Modern Spain

NISHIMURA Kimiyo Professor
Spanish Grammar, Spanish Morphology

TANI Hiroyuki Professor
Latin American economy, Mexican studies

UCHIMURA Shunta Professor
History of Early Modern Spain

AROZ Aingeru Associate Professor
Sociolinguistics, History of Linguistics, Applied Linguistics

DOÑAS Antonio Associate Professor
Spanish Medieval Literature, Philology, History of Thought

ALAS MORENO Nancy Assistant Professor
Comparative Law, Tax Law, Latin American Law

Department of Russian Studies

ADACHI Yuko Professor
The political economy of state-business relations in Russia, corporate governance in Russia

AKIYAMA Shinichi Professor
Syntax, collocation and phonetic transcription of Russian language

MURATA Shinichi Professor
Russian Theatre, Russian Culture, Comparative Theatre

YUASA Takeshi Professor
Security, political change, and regional organizations in the post-Soviet area

LATYSHEVA Svetlana Associate Professor
Language translation, Comparative studies of Russian and Japanese cultures, Method of teaching Russian language

MUKHINA Varvara Associate Professor
Migration Studies, Research on Identity, Research on Motivation to learn Russian

ADEGAWA Nobuyoshi Associate Professor
Semantics of Russian verbs, aspect, aspectuality, modality, quantitative description of linguistic units

SAYAMA Gota Associate Professor
Applied linguistics of Russian, Cognitive linguistics and Corpus linguistics

Department of Luso-Brazilian Studies

DIAS Nilta Associate Professor
Education of Brazilian Residents in Japan, Education in Brazil

GIBO Lucila Etsuko Associate Professor
Linguistics; Tense, Aspect, Modality, and Evidentiality in Portuguese; Okinawan Language in Brazil.

ICHINOSE Atsushi Professor
Linguistics, Lexically Portuguese-based Creoles, Modern History of Lusophone Countries

KOYASU Akiko Professor
International Relations, Politics and Diplomacy of Brazil

NEVES Mauro Professor
The image of society on Latin American telenovelas and films, Fado and Portuguese society, Pop Culture Comparative Studies

TAMURA Rika Professor
Area Studies (Brazil), Sociology, Developments and NGOs

YAZAWA Tatsuhiro Professor
African Studies (especially Politics and History), African Diaspora Studies (especially Blacks and Race Relations in Brazil)

*nontenured faculty member

MIYAIRI Ryo Assistant Professor
Brazilian literature, Literature and culture centered on the Brazilian Northeast

SILVEIRA Thamis Larissa Lecturer*
Portuguese as an Additional Language, Applied Linguistics, Black Brazilian Literature and Studies on Ethnic-racial Relations

FACULTY OF GLOBAL STUDIES

Department of Global Studies

AKAHORI Masayuki Professor
Anthropology, Islamic Area Studies

AUGUSTINE Sali Professor
Ethnic Politics, Area Studies (South Asia)

FUKUTAKE Shintaro Professor
Anthropology, Southeast Asian Studies

INABA Nanako Professor
Sociology of Globalization, International Migration Studies, Social Movement Studies

KISHIKAWA Takeshi Professor
Comparative Politics, Democratization

KOBAYASHI Ayako Associate Professor
International Politics, Peace and Conflict Studies, International Organization

KUSHIMOTO Hiroko Associate Professor
Muslim Societies in South East Asia, Cultural Anthropology, Comparative Education

KWON Hyang Suk Associate Professor
Northeast Asian Studies, Society and Culture in East Asia, Migration Studies, Korean-Chinese Studies

MAESHIMA Kazuhiro Professor
American Government and Politics

MAKI Momoka Professor
African History, Ethiopian Studies, Eritrean Studies

MARUI Masako Professor
Southeast Asian Archaeology, Cultural Heritage Studies

MARUYAMA Hideki Professor
Comparative and International Education, International Educational Cooperation, ESD, Sustainable Education

NAKAUCHI Masataka Professor
International Politics, Peacebuilding, Regional Integration, Regional Organization

OGISU Takayo Assistant Professor by Special Appointment
Comparative and International Education, International Educational Development and Cooperation, Teacher Education

SAITOU Kousuke Associate Professor
International Politics, Security Studies, Innovation and Politics, Dual-use Technology

SAKURADA Chie Assistant Professor
Political History of Southeast Asia, Area Studies (Thailand), Monarchy in Modern Society

SAWAE Fumiko Professor
Contemporary Politics and Society of Turkey, Islam and Politics

SHIMOKAWA Masatsugu Professor
Development Economics, International Political Economy, Globalization and Poverty Issues

SUZUKI Kazutoshi Professor
International Relations, International Political Economy, Computer Simulation

TAKASHIMA Ryo Professor
Development Economics, International Trade, Economic Analysis of Happiness and Subjective Well-Being

TANAKA Masako Professor
Development Studies, International Cooperation, Gender Studies, South Asian Area Studies

TODA Mikako Associate Professor
African Area Studies (Central Africa), Ecological Anthropology, Disability in Africa

TSUJIGAMI Namie Professor
Comparative Gender Studies in the Middle East, Area Studies

TSURU Yasuko Professor
International Politics, Peace Studies, Asian Marine Security

WATANABE Shino Professor
International Relations, Contemporary Chinese Politics, International Relations of East Asia

WEISS, Tobias Associate Professor
Political Sociology, Field Theory, Japanese Studies, Journalism, Civil Society, Social Movements

YAMAGUCHI Akihiko Professor
Middle Eastern Studies, Modern History, Minority Politics

FACULTY OF LIBERAL ARTS

Comparative Culture Major

KONO Shion Professor
Comparative Literature, Modern Japanese Literature

MURAI Noriko Professor
Modern Art History (Japan), Visual Culture, Gender Studies

STRECHER Matthew Professor
Modern and Contemporary Japanese Literature, Literary Journalism, Genre Studies, Mythology, Global Literature, Post Modernism

YIU Angela Professor
Modern Japanese Literature, Modernism, Postwar Literature

DROTT Edward Associate Professor
History of Japanese Religion, Religion and the Body

MURAKAMI Tatsuo Associate Professor
Religious Studies (Religious Violence, Moral Economy, Popular Religion)

OKITA Kiyokazu Associate Professor
Classical Sanskrit Literature, Intellectual Traditions of South Asia, Early Modern and Modern Bengali Literature

THOMPSON Mathew Associate Professor
Medieval and Early Modern Japanese Literature, The Legend of Minamoto no Yoshitsune

CHAN Yen-Yi Assistant Professor
Premodern Art History (Japan), Buddhist Art, East Asian Artistic Exchange

FRISCHHUT Akiko Assistant Professor
Contemporary analytical philosophy, esp. metaphysics, philosophy of time, philosophy of mind, aesthetics, philosophy of food

International Business and Economics Major

HAGHIRIAN Parissa Professor
Japanese Management, Japanese Consumer Behavior and Cross-cultural Management

ISAKA Naoto Professor
Financial Markets, Corporate Finance

KHOJASTEH Yacob Professor
Operations Management, Supply Chain Management

ASANO Akihito Associate Professor
Applied Microeconomic Theory

DE MAEYER Peter Associate Professor
Customer Satisfaction, Pricing and Advertising

FUENTES CORDOBA Gabriel Associate Professor
Muslim Societies in South East Asia, Cultural Anthropology, Comparative Education

HASEBE Takuya Associate Professor
Econometrics, Labor Economics, Health Economics, Applied Microeconomics

SAKANE Michiru Associate Professor
Macroeconomics, International Finance

UENISHI Junko Associate Professor
Financial Accounting, International Accounting

Social Studies Major

ANNO Tadashi Professor
International Relations, Japanese Security Policy, Nationalism

FARRER James Professor
Globalization, Urban Studies, Migration, Sexualities, Cuisine and Nightlife

GRAMLICH-OKA Bettina Professor
Early Modern (Tokugawa) Japan, Women's History, Gender Studies, Network Studies, Economic Thought

ITO Takeshi Professor
Agrarian and Environmental Change, Political Ecology, Political Economy, Development, Domination and Resistance, Japan, Southeast Asia

NAKANO Koichi Professor
Comparative Politics, Japanese Politics, Political Thoughts, New Right Transformation

SAALER Sven Professor
Modern Japanese History

SLATER David Professor
Cultural Anthropology: Refugees and Immigrants; Political Activists; New Media; Digital Archives; Labor; Disaster; Narrative; Japan

BURRETT Tina Associate Professor
Political Leadership, Media and Politics, Comparative Politics (especially in Russia, Japan, Myanmar and the UK)

HESS Christian Associate Professor
Modern Chinese History, Urban History, Japanese Colonialism in Northeast China

MINAGAWA Yuka Associate Professor
Social Demography, Health and Aging, Eastern Europe

WATANABE Takehiro Associate Professor
Cultural Anthropology, Environmental Studies, Japan, Urban Ecology, Watershed Governance, Aesthetics of Economic Forms, Science and Technology Studies

Core Program

FOGAL Gary Associate Professor
Applied Linguistics, Complexity / Dynamic Systems Theory, L2 Developmental Processes, Second Language Writing, Language & Literature (Stylistics)

HARWOOD Chris Associate Professor
Language and Literacies Education, Sociocultural Theory, Online Pedagogy

KOYAMA Dennis Associate Professor
Applied Statistics, Collaborative Learning, Educational Assessment, Second Language Writing, Task-based Language Teaching, Task Complexity

OKADA Hanako Associate Professor
Applied Linguistics, Narrative Inquiry, Language and Identity

FACULTY OF SCIENCE AND TECHNOLOGY

Department of Materials and Life Sciences

FUJITA Masahiro Professor
Development of Functional Materials Using Polymers and Ionic Liquids

FUJIWARA Makoto Professor
Molecular Cell Biology of Plant Organelles

HASHIMOTO Takeshi Professor
Supramolecular Chemistry, Coordination Chemistry, Electrochemistry

HAYASHI Kensuke Professor
Development of Neuronal Morphology and Function

Research Themes of Sophia Faculty (As of April 2023)

HAYASHITA Takashi Professor
Analytical Chemistry, Supramolecular Chemistry, Molecular Recognition Chemistry

HORIKOSHI Satoshi Professor
Novel Chemistry, Biology, Energy, and Environmental Conservation Using Microwave Science

HOSHINO Masamitsu Professor
Excitation Processes of Atoms and Molecules by Electron and Photon Impacts

KANZAWA Nobuyuki Professor
Studies on the Mechanism of Seismonastic Movement in Plants

KIKAWADA Yoshikazu Professor
Geochemistry, Chemical Volcanology

KONDO Jiro Professor
Design of Pharmaceuticals and Nanomaterials Based on 3D Structural Information of DNA

KUZE Nobuhiko Professor
Studies on Molecular Structures by Gas-phase Electron Diffraction, Microwave Spectroscopy and Quantum Chemical Calculations

NAGAO Hirotaaka Professor
Coordination Chemistry

NANBU Shinkoh Professor
Theoretical Chemistry, Physical Chemistry

ODAGIRI Takeshi Professor
Collisions of Photons, Electrons, Atoms and Molecules. Spectroscopy and Dynamics of Molecular Resonance States

OKADA Kunihiro Professor
Atomic, Molecular and Optical Physics, Cold Ion Chemistry

RIKUKAWA Masahiro Professor
Polymer Materials for Clean Energy and Biomedical Applications

SAITO Tamao Professor
Environmental Molecular Biology, Biochemistry

SUZUKI Noriyuki Professor
Development of Novel Organic Compounds and Reactions Involving Metal-carbon Bonds

SUZUKI Yumiko Professor
Synthesis of Bioactive / Functionalized Molecules and Development of Organocatalysis

TAKAHASHI Kazuo Professor
Development of Low-Carbon and Carbon-Free Combustion Technology by Controlling Chemical Reactions

TAKEOKA Yuko Professor
Synthesis and Application of Functional Polymers

UCHIDA Hiroshi Professor
Studies on Structure, Function, and Deposition Technique

USUKI Toyonobu Professor
Organic and Biorganic Chemistry of Natural Products

YASUMASU Shigeki Professor
Developmental Biology, Evolutionary Biology

FUYUTSUKI Seba Associate Professor
Atmospheric Chemical Modeling Applied to Planetary Atmospheres

KAWAGUCHI Mari Associate Professor
Molecular Evolutionary Studies of Brood Pouch in Syngnathid Fishes

MISAWA Tomoyo Associate Professor
Studies on Molecular Conversion Reactions on Multi-nuclear Metal Complexes

SUZUKI Nobuhiro Associate Professor
Molecular Mechanisms Regulating Abiotic Stress Responses of Plants

TANAKA Kunihiro Associate Professor
Surface Treatment and Thin Film Deposition with Plasma Technique

YASUGI Tetsuo Associate Professor
Developmental Genetics

YOKOTA Yuki Assistant Professor
Development of Photochemical Functional Materials Using Metal Nano Structures

THOMAS Morgan Leslie Associate Professor by Special Appointment
New Electrolytes, Energy Storage, Carbon Dioxide Utilisation

Department of Engineering and Applied Sciences

ADACHI Tadashi Professor
Synthesis of quantum materials and elucidation of mechanism of superconductivity and new functional materials

EMA Kazuhiro Professor
Optical Physics, Optical Properties of Solids, Photonics

GOTO Takayuki Professor
Low Temperature Condensed State Physics

HIRANO Tetsufumi Professor
Hadron physics, Quark gluon plasma

HISAMORI Noriyuki Professor
Environmental material strength, Biomaterial Science, Sports Medicine

KIKUCHI Akihiko Professor
Widegap Semiconductor Nanofabrication/Nanostructural-device, Organic-inorganic hybrid optical device, Visible Photonic Crystal

KUWAHARA Hideki Professor
Materials Science, Solid State Physics

MIYATAKE Masafumi Professor
Transportation Electrification and Smartification for Sustainability

NAGASHIMA Toshio Professor
Computational Mechanics, Structural Engineering

NAKAOKA Toshihiro Professor
Quantum information device, Resistance switching memory, Nano electronics, Semiconductor physics

*nontenured faculty member

For more information
Education and Research Information Database



TSUZUKI Masao Professor
Modular forms and related L-functions, Selberg zeta functions and trace formulas

YAIRI Ikuko Professor
Intelligent Informatics, Brain Science, Genome Science, Design Science

GOMI Yasushi Associate Professor
Representation theory of algebraic groups and Hecke algebras

KAWABATA Ryo Associate Professor
Information Systems Engineering, Software Engineering

MIYAMOTO Yuichiro Associate Professor
Combinatorial Optimization, Algorithm

OSHIRO Kanako Associate Professor
Topology, Knot Theory

SUMI Chikayoshi Associate Professor
Remote sensing, Medical Engineering, Medical Ultrasound, Visualization

TRIHAN Fabien Associate Professor
Arithmetic Geometry, Number Theory, Iwasawa Theory

YAMANAKA Takao Associate Professor
Sensory Information Processing, Computer Vision, Pattern Recognition

YAMASHITA Haruka Associate Professor
Business analytics, Statistical quality control, Applied Statistics

GOTO Satoshi Assistant Professor
Operator Algebras

HIRATA Hitoshi Assistant Professor
Nonlinear Partial Differential Equations, Applied Analysis

KAMEDA Yusuke Assistant Professor
Visual information processing, Video coding, Image sensing, 3D video processing, Numerical analysis

KIMURA Akitoshi Assistant Professor
Mathematical Statistics, Stochastic Process, Time Series Analysis

KOMATSU Rina Assistant Professor by Special Appointment
Image Recognition and Generation using Deep Learning

CENTER FOR LIBERAL EDUCATION AND LEARNING

Center for Liberal Education and Learning

SHIMA Takeshi Professor
Sports Coaching Science, Flying Disc, Swimming

YOSHIDA Minako Professor
Somatic Education, Bodywork, Infant Developmental Movement Education (IDME)

YOSHIKAWA Mami Professor
Environmental Education, Integral Ecology, Studies in Christian Humanism

TAKEMURA Ryoko Associate Professor
Sport Psychology, Tennis

BAE Jiyun Assistant Professor
Education, Philosophy of sport, Somaesthetics

MATSUMURA Kohi Assistant Professor
Jesuit Education, History of Christian Thoughts, Studies in Christian Humanism

ARAI Mami Lecturer*
Dance Research, Contemporary Dance, Community Dance

KUBO Fumihiko Lecturer*
Biblical Studies, Christian Ethics

SHOGATA Atsushi Lecturer*
Sport Anthropology

POLITO Michael Associate Professor by Special Appointment
Catholic education, Catholic studies

KAWATANI Gen Assistant Professor by Special Appointment
Statistical Mathematics, Applied Mathematics, Graph Theory

KWON Sunhee Assistant Professor by Special Appointment
Statistical Methodology, Consumer Behavior Models

MAENO Seitaro Assistant Professor by Special Appointment
Rural Sociology, Social History, Taiwan Studies

MIYAKAWA Yu Assistant Professor by Special Appointment
Early Japanese Literature, Kofudoki, Critical Thinking and Writing

NAKANO Haruka Assistant Professor by Special Appointment
Missionary Linguistics, Lexicography, Philology

RI Yongmi Assistant Professor by Special Appointment
East Asia and Postwar Japanese History, Citizenship

SANAI Sato Assistant Professor by Special Appointment
Social Psychology, Crime Prevention, Urban and Regional Planning

SAITO Mika Assistant Professor by Special Appointment
Japanese Classical Literature, Japanese Literature

TOKINOYA Katsuyuki Associate Professor by Special Appointment
Exercise physiology, Exercise biochemistry, Molecular cell biology

UMEDA Kota Assistant Professor by Special Appointment
Philosophy, Ethics, Modern German thought

USUI Chiyoko Associate Professor by Special Appointment
Exercise Physiology, Applied Health Science, Women's Health

CENTER FOR LANGUAGE EDUCATION AND RESEARCH

Center for Language Education and Research

FUJITA Tamotsu Professor
Second Language Acquisition, Bilingualism, TESOL

HEMMI Chantal Professor
English Language Education, Teacher Education, Identity of Bilinguals

HIROYASU Yoshimi Professor
Spanish Language Education, Linguistics

KITAMURA Ayako Professor
French Language Education, French Phonetics, Phonetic Education

KOYANAGI Kaoru Professor
Language Acquisition Theories, Applied Psycholinguistics, Japanese Language Pedagogy

MINE Fuyuki Professor
Second Language Acquisition, Japanese Linguistics, Japanese Language Pedagogy

SHIMIZU Takafumi Professor
Second Language Acquisition, Interlanguage Pragmatics, Japanese Language Pedagogy

SUGIKI Yoshiaki Professor
English Literature

HUANG Wanting Associate Professor
Linguistics (Discourse Analysis, Semantics, Pragmatics), Japanese Language Education

IMAI Yasuhiro Associate Professor
Second Language Education, Emotion and Learning, Individual Psychology (Adlerian Psychology)

KIM Ahran Associate Professor
Japanese-Korean Contrastive Linguistics

MASAKI Akiyo Associate Professor
German Phonetics, Phonetic Education

NAGASAWA Ituski Associate Professor
Pedagogical Japanese Grammar & Vocabulary, History of the Japanese Language, Japanese Language Pedagogy

SATO Takanori Associate Professor
Applied Linguistics, Language Testing, English as a Lingua Franca

TSUTSUMI Yasunori Associate Professor
Italian Literature

MACKENZIE Graham Associate Professor by Special Appointment
English as a Medium of Instruction, Attitudes to the English Language in Japan, CLIL

URAWA Chie Associate Professor by Special Appointment
Corpus Linguistics, Professional Communication, Multimodal Analysis

YOKOMOTO Katsuya Associate Professor by Special Appointment
Applied Linguistics, TESOL

YONEZAWA Masako Associate Professor by Special Appointment
Japanese Linguistics, Japanese Language Education

AIKAWA Hiroko Lecturer*
Sociolinguistics, TESOL

BABULALL Alexander Lecturer*
Negotiated Syllabi, Practical Activities for Developing, Language Skills and Process Writing

CHAMBERS Garcia Lecturer*
Aesthetic Appreciation in English Education, Japanese Aesthetics, Applied Contemporary Aesthetics, Postcolonial Literature

CUNNINGHAM Neale Lecturer*
German Literature; Hermann Hesse's Worldwide Reception, Transnational Reception of Literature

FUKASAWA Emi Lecturer*
Applied Linguistics, Interlanguage Pragmatics

GARLAND Brendan Lecturer*
Applied Linguistics, English Literature

HAYASHI Sumire Lecturer*
CLIL, TESOL

KANEMATSU Nina Lecturer*
German Language Education, Second Language Acquisition, School Development

KAWASHIMA Mayumi Lecturer*
Applied Linguistics, Sociolinguistics, Intercultural Communication

KOBAYASHI Koji Lecturer*
Japanese Linguistics, Japanese Language Pedagogy

KOMATSU Hiroko Lecturer*
Cognitive Linguistics, Japanese Linguistics, Semantics

KOVALYOVA Angelina Lecturer*
Writing Competence, MALL (mobile-assisted language learning), EFL (English as a foreign language)

LIU Miao Lecturer*
Chinese Linguistics, Chinese Language Education

MAILLEUX Coline Lecturer*
French Language Education, Online Learning

MCEVOY Jason Lecturer*
Anthropology, Ethnography, Critical Thinking, and Intercultural Pragmatics

MORGAN Jennifer Lecturer*
Critical Literacy, TESOL

NAGASU Mika Lecturer*
Japanese Linguistics, Japanese Language Education

NAKAJIMA Sayaka Lecturer*
Spanish Language Education, History of Chilean Culture in the 20th Century

NOGUCHI Kiyoshi Lecturer*
Applied Linguistics, Japanese Language Education

PATRICK Philip Lecturer*
Language Testing and Assessment

SCHAEFER Matthew Lecturer*
Applied Linguistics, TESOL

SERA Tokiko Lecturer*
Japanese Linguistics, Japanese Language Education

SUZUKI Asami Lecturer*
Applied Linguistics, TESOL

WALKER Michael Lecturer*
Applied Linguistics, TESOL, Pragmatics

*nontenured faculty member

CENTER FOR GLOBAL EDUCATION AND DISCOVERY

Center for Global Education and Discovery

HIROATO Yasushi Professor
International Educational Development, International Cooperation in Education, Comparative and International Education

HIGASHI Daisaku Professor
International Relations, Post-Conflict Peacebuilding, Mediation

SUGIURA Mikiko Professor
Water Resources Management / Ecology / Agriculture, Environment, and Society

MIZUTANI Yuka Professor
Cultural Anthropology, Issues in the Americas, Contemporary Issues of Indigenous Peoples, Geographic Boundaries

UMEMIYA Naoki Professor
International Cooperation in Education, International Educational Development, International Higher Education, Comparative and International Education

RHEE Wonkyung Associate Professor
International Relations, Digital Diplomacy, East Asian Studies

HAVRANEK Erich Lecturer*
Comparative Literature, Media Studies, Intercultural Competence, Foreign Language Acquisition

YAMAZAKI Eri Lecturer*
Development Education / Education for Sustainable Development, Comparative Education, African Studies

GRADUATE SCHOOL OF APPLIED RELIGIOUS STUDIES

Master's (Doctoral) Program in Death and Life Studies

TERAO Kazuyoshi Professor
History of Religious Thought, Death and Life Studies, Catholicism in Modern Japan

SATO Keisuke Professor
Contemporary Philosophy of Religion, Ethics of Death and the Dead, Contemporary French Philosophy

KASAI Kenta Professor
Addiction Recovery and Religion, Comparative Studies of Education for Clinical Listeners

GRADUATE SCHOOL OF LAW

Juris Doctor Program (Law School)

KOYAMA Yasushi Professor
Civil Law, Law of Secured Transactions

IWASHITA Tomomitsu Professor
Criminal Procedure

MAKI Misaki Professor
Constitutional Law

NAGASHITA Yasuyuki Professor
Civil Law, Tort Law

OCHI Toshihiro Professor
Environmental Law, Administrative Law

HARA Tsuyoshi Professor
The Comparative Study of Japanese Civil Procedure and U.S. Civil Procedure

TSUCHIDA Ryo Professor
Corporate Law, Commercial Law

ASAYAMA Yoshifumi Professor
Criminal Law, Criminal Law Practice

IWASAKI Masataka Professor
Civil Law Practice, Juvenile and Criminal Law Practice, Legal Ethics

KOBAYASHI Toshihiko Professor
Criminal Law, Criminal Law Practice, Legal Ethics

TSUIKI Kazuo Professor
Corporate law, commercial law

SATO Yumi Associate Professor
Criminal Law

HAYAKAWA Sakuya Associate Professor
Corporate Law, Commercial Law

SHISHIDO Hiroyuki Associate Professor
Civil and Criminal Law Practice

GRADUATE SCHOOL OF LANGUAGES AND LINGUISTICS

Master's (Doctoral) Program in Linguistics

FUKUI Naoki Professor
Cognitive science, theoretical linguistics, the neuroscience of language, philosophy of linguistics

WATANABE Yoshinori Professor
Language testing, washback effects of language assessment, classroom research, CLIL

YOSHIHATA Hiroyo Professor
Language and communication disorders in adults

HARA Keiko Associate Professor by Special Appointment
International language and communication disorders

KATO Takaomi Associate Professor
Theoretical linguistics, syntax, syntax-semantics interface, syntax-phonology interface

GRADUATE SCHOOL OF GLOBAL STUDIES

Master's Program in International Cooperation Studies

UEKI Yasuhiro Professor by Special Appointment
International Politics, United Nations Studies, International Organizations, Conflict Resolution

GRADUATE SCHOOL OF SCIENCE AND TECHNOLOGY

Master's (Doctoral) Program in Science and Technology

SASAKAWA Nobuyuki Professor
Neuropharmacology, Neuroscience

GRADUATE SCHOOL OF GLOBAL ENVIRONMENTAL STUDIES

Master's (Doctoral) Program in Global Environmental Studies

ANNO Sumiko Professor
Environmental Health, Machine and Deep Learning Applications

NAKAGAWA Yoshinori Professor
Participatory visioning, Future Design

HUANG Guangwei Professor
Watershed Science and Management, Environmental Impact Assessment

MCDONALD Anne Professor
Environmental Policy, Environmental History

ORI Akemi Professor
Environmental Law, Environmental Policy

PARK Haemi Assistant Professor
Environmental Remote Sensing, Forest Ecosystem

QIAN Xuepeng Professor
Urban and Environmental Planning

SUZUKI Masachika Professor
Environmental Management and Strategy

TANAKA Yoshinari Professor
Conservation Ecology, Ecological Risk Assessment

TSUGE Takahiro Professor
Environmental Economics

GRADUATE DEGREE PROGRAM OF APPLIED DATA SCIENCES

Master's Program in Applied Data Sciences

MOMOSE Kimio Professor by Special Appointment
Process Mining, Data Risk Management

OHARA Yoshiko Professor
People Analytics, Data Analytics

BAN Kasumi Associate Professor
Data driven Marketing, Data driven Brand Management, Consumer Psychology

FUKAZAWA Yusuke Associate Professor
Applied machine learning, human behavior understanding, and application to healthcare/transportation fields

KOBAYASHI Hirotaka Associate Professor
Data driven management, Data driven transformation

FACULTY MEMBER BY SPECIAL APPOINTMENT-AFFILIATED RESEARCH ORGANIZATION, etc

Faculty Member by Special Appointment-Affiliated Research Organization, etc

ISHIZAWA Yoshiaki Professor
History of Southeast Asia, Study on Epigraphy of Ancient Cambodia

Miwa Satoru Assistant Professor by Special Appointment
History of Southeast Asian Architecture, Conservation and Restoration of the Cultural Heritage

OHMURA Tetsuo Professor by Special Appointment
Clinical Psychology, Anthropology of Religion

KURIHARA Yuki Professor by Special Appointment
Palliative/End-of-Life Care, Narrative Medicine

NISHIHARA Tadashi Professor by Special Appointment
Philosophy of Human Lifecycle, Self-Cultivation and Spiritualities

ATARASHI Erika Assistant Professor by Special Appointment
Learning Sciences, Learner-Centered Pedagogy, Inquiry-Based Learning

KAMATA Takehito Assistant Professor by Special Appointment
International Research Collaborations, Higher Education Internationalization, Science and Technology Policy, Research Integrity

KATO Miwa Professor by Special Appointment
International Relations; Conflict Resolution; Diversity, Equity & Inclusion; Social Innovation

KURIHARA Mineo Professor by Special Appointment
Sociology of Education, Japanese Language Teaching, Study of Teacher

SAZAKI Junko Professor by Special Appointment
International Cooperation, Development Policies, Global Issues, Global Health, Population and development, Peace Building, Gender

YAJIMA Motomi Professor by Special Appointment
Constitutional Law

YOSHIDA Shuma Associate Professor by Special Appointment
Ethics, History of Ethics, Bioethics, Research Ethics