

## Graduate Programs in English



### Graduate Program in Global Studies (GS)

[M.A.] Global Studies, International Business and Development Studies, Japanese Studies  
[Ph.D.] Global Studies, Japanese Studies

### Graduate Program in Global Environmental Studies (GES) [M.A.][Ph.D.]

**Graduate Program in Science and Technology (GPST) [M.S.][Ph.D.]**  
(Green Science & Engineering Division)

#### > Entry Dates

April 1 and September 21 (For M.S. in Green Science and Engineering, autumn entry only)

#### > Method of Admission

• Document screening and interview

#### > Application Periods

April 2024 entry	August 23 - September 13, 2023
------------------	--------------------------------

September 2024 entry	March 13 - April 3, 2024
----------------------	--------------------------

#### > Tuition ( approx. )

[GS]  
M.A. ¥922,000 / Ph.D. ¥803,000 first year  
M.A. ¥720,000 / Ph.D. ¥601,000 second year

[GES]  
M.A. ¥1,033,000 / Ph.D. ¥869,000 first year  
M.A. ¥831,000 / Ph.D. ¥667,000 second year

[GPST]  
M.S. ¥1,598,000 / Ph.D. ¥1,024,000 first year  
M.S. ¥1,397,000 / Ph.D. ¥822,000 second year

For details and application forms, visit : <https://adm.sophia.ac.jp/eng/admissions/>  
→ Graduate Admissions → English-taught Programs

### Master's Program in Linguistics ( TESOL )

### Master's Program in Education

### Master's Program in International Cooperation Studies

### Ph.D. Program in Education

#### > Entry Date

April 1 (spring entry only)

#### > Method of Admission

Document screening and interview  
(written exam for Education, International Cooperation Studies)

#### > Application Periods

April 2024 entry	1st application	June 14 - June 28, 2023
	2nd application	Nov. 15 - Nov. 29, 2023

#### > Tuition( approx. )

M.A. ¥922,000 / Ph.D. ¥803,000 first year  
M.A. ¥720,000 / Ph.D. ¥601,000 second year

For details and application forms, visit : <https://adm.sophia.ac.jp/eng/admissions/>  
→ Graduate Admissions → English-taught Programs

## Short-term Study Options

### Non-degree Programs (full-time students)

#### > English Track

For students who wish to study for one or two semesters and earn credits as full-time students. Students take classes from the following fields.

• Comparative Culture • International Business and Economics • Social Studies  
• Japanese Studies • Japanese Language Regular Program

#### > Japanese Intensive Track

For students who wish to take Japanese Intensive Program for one or two semesters and earn credits as full-time students.

For detailed information, visit : <https://adm.sophia.ac.jp/eng/admissions/>  
→ Undergraduate Admissions → Non-degree Programs



### Short-term Programs

#### Summer Session in East Asian Studies and Japanese Language

This program (three weeks in July) provides participants with opportunities to take part in East Asian studies courses and intensive Japanese language courses.

1) **East Asian Studies courses** are focused on Japan and Japan's relationships with Asia and the rest of the world.

**Tuition** 2 Courses: ¥190,000  
3 Courses: ¥258,000

2) **Japanese Language courses** are tailored for students who want to intensively improve their Japanese Language abilities.

**Tuition** ¥220,000

#### January Session in Japanese Studies

This program (three weeks in January, 2024) offers courses focused on Japanese culture, media, and business. The basic Japanese language course is also offered.

Note: The mode of instruction will be notified on the website below once decided.

**Tuition** 2 Courses: ¥190,000  
3 Courses: ¥258,000

The mode of instruction, course offered, and fees may vary.  
For detailed information, visit : <https://piloti.sophia.ac.jp/eng/studyabroad/short-term/>



## Campus Location / Contact

### Campus Location

Sophia University is located in Yotsuya, in the heart of Tokyo. The area around the university has long been at the center of Japanese politics, economy and culture.

The Imperial Palace, the Parliament, the State Guesthouse, and the National Diet Library as well as an array of offices of multinational enterprises are all within easy walking distance from University.

It is a place where you can feel the dynamism of the global city of Tokyo, experience its urban atmosphere and get the most of the opportunities available in Japan.

### Contact

#### Sophia University

7-1 Kioi-cho, Chiyoda City, Tokyo 102-8554, Japan [www.sophia.ac.jp/eng/](http://www.sophia.ac.jp/eng/)

#### Admissions Office

Tel : +81-3-3238-3167, 4018 (Undergraduate)

+81-3-3238-3517 (Graduate)

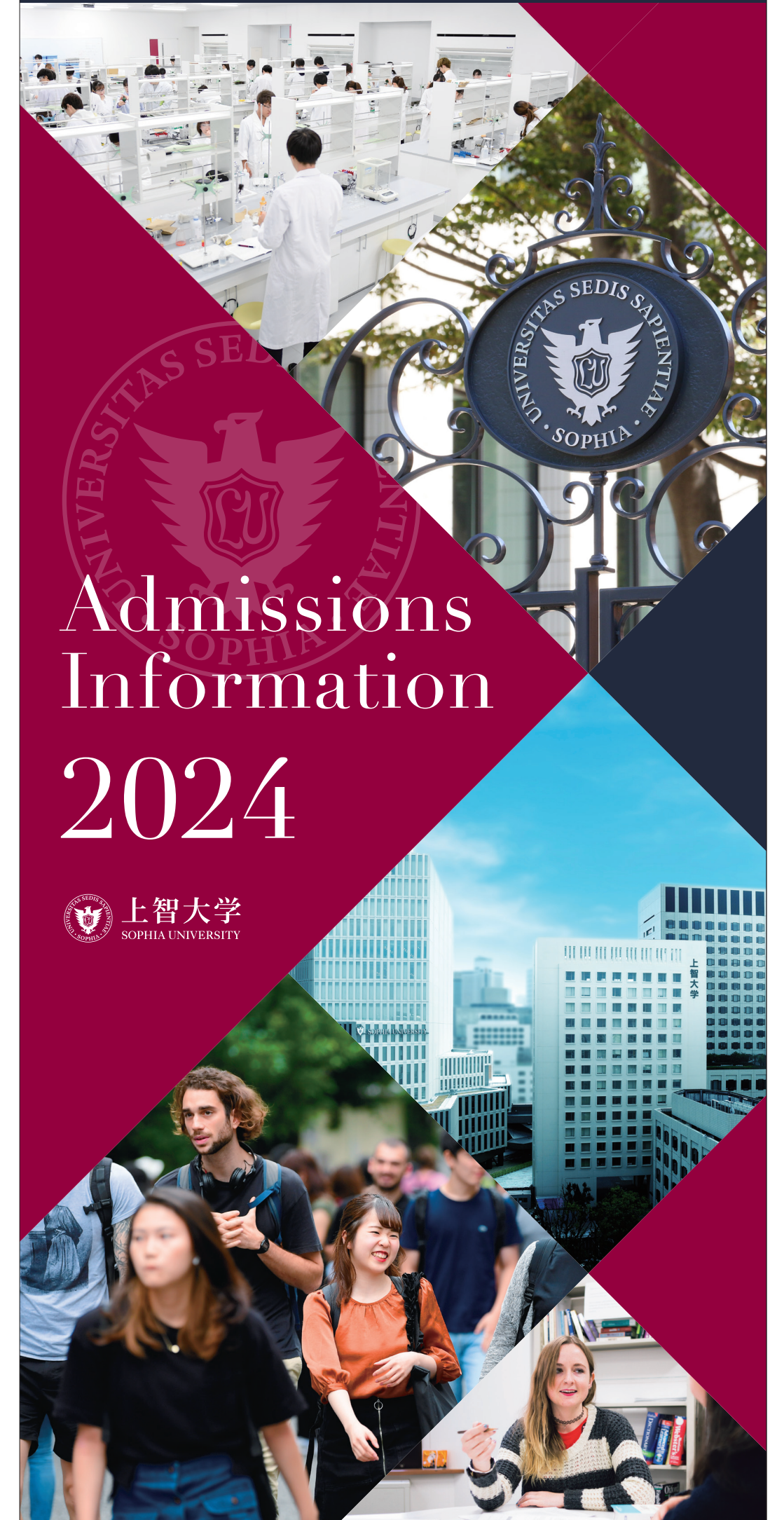
Fax : +81-3-3238-3262

Email : [admission-u-co@sophia.ac.jp](mailto:admission-u-co@sophia.ac.jp) (Undergraduate)

[admission-g-co@sophia.ac.jp](mailto:admission-g-co@sophia.ac.jp) (Graduate)



FOR OTHERS, WITH OTHERS



# Admissions Information 2024

 上智大学  
SOPHIA UNIVERSITY



## Undergraduate Programs in English

### Faculty of Liberal Arts

Pioneer of International University Education



#### Areas of Study

Comparative Culture, Social Studies, International Business and Economics

#### Entry Dates

April 1 and September 21

#### Method of Admission

Document screening

#### Application Materials

Transcripts, SAT/ACT scores or IB Diploma or GCE A levels, TOEFL or IELTS scores, Recommendation letters, Essay in 500 words

#### Application Periods

April 2024 entry	1st application	Aug. 23 - Sep. 13, 2023 [ First - years and Transfer ]
	2nd application	Nov. 15 - Dec. 8, 2023 [ First - years only ]
September 2024 entry	1st application	Nov. 15 - Dec. 8, 2023 [ First - years only ]
	2nd application	March 13 - April 3, 2024 [ First - years and Transfer ]

#### Tuition ( approx. )

¥1,570,000 (for the first year)

¥1,350,000 (from the second year on)

For details and application forms, visit : <https://adm.sophia.ac.jp/eng/admissions/>  
→ Undergraduate Admissions → English-taught Programs



### Faculty of Science and Technology

International Program for Environmental Science and Technology



#### Areas of Study

Green Science in the Department of Materials and Life Sciences  
Green Engineering in the Department of Engineering and Applied Sciences

#### Entry Date

September 21 (autumn entry only)

#### Method of Admission

Document screening

#### Application Materials

Transcripts, SAT(+AP/IB Certificate) / ACT / EJU / IB Diploma / GCE A levels, TOEFL or IELTS scores, Recommendation letters, Essay in 500 words

#### Application Periods

September 2024 entry	1st application	Nov. 15 - Dec. 8, 2023 [ First - years only ]
	2nd application	March 13 - April 3, 2024 [ First - years and Transfer ]

#### Tuition ( approx. )

¥1,860,000 (for the first year)

¥1,640,000 (from the second year on)

For details and application forms, visit : <https://adm.sophia.ac.jp/eng/admissions/>  
→ Undergraduate Admissions → English-taught Programs



### Sophia Program for Sustainable Futures (SPSF)

New International Program Established in September, 2020



#### Areas of Study

Journalism in Department of Journalism  
Education in Department of Education  
Sociology in Department of Sociology  
Economics / Management in Department of Economics  
International Relations and Area Studies in Department of Global Studies

#### Entry Date

September 21 (autumn entry only)

#### Method of Admission

Document screening

#### Application Materials

Transcripts, SAT/ACT/IB Diploma/GCE A Levels, TOEFL or IELTS scores, Recommendation letters, Essay in 500 words

#### Application Periods

September 2024 entry	1st application	Nov. 15 - Dec. 8, 2023 [ First - years only ]
	2nd application	March 13 - April 3, 2024 [ First - years only ]

#### Tuition ( approx. )

¥1,570,000 (for the first year)

¥1,350,000 (from the second year on)

For details and application forms, visit : <https://adm.sophia.ac.jp/eng/admissions/>  
→ Undergraduate Admissions → English-taught Programs



## Scholarships, Housing, and more

**Financial Assurances** Various types of scholarships and financial aids are available.

#### Scholarship applications accepted at the time of admission application

##### New Students Scholarship

The grant varies from one-third to the full amount of the first-year tuition.

##### Adachi Scholarship for students from Southeast Asia and Africa

Equivalent to the full tuition and education enhancement fee for the first year.

#### Other financial aid programs ( applications accepted after entrance )

##### Sophia University Tuition Support Scholarships

Either 1/3, 1/2, or full tuition support for international students with "Student" status of residence.

##### The Monbukagakusho Honors Scholarship

¥48,000 / month

##### Sophia University Academic Excellence Awards

##### Sophia University Benefactors' Scholarships

Other scholarship programs : more than 100 offered by public or private organizations

For more information, visit : <https://piloti.sophia.ac.jp/eng/> → Scholarships



#### MEXT ( Monbukagakusho ) Scholarship

- Offered by the Japanese Government to students

For more information, contact the Center for Global Education and Discovery (inbound-co@sophia.ac.jp) or visit : <https://piloti.sophia.ac.jp/eng/>  
→ Admissions → Graduate Admissions → About MEXT scholarship



## Housing

#### Dormitories

Sophia has several off-campus dormitories and affiliated dormitories for students in the Tokyo area.

##### Sophia Soshigaya International House (Setagaya City)

60 minutes to Sophia Campus  
Rent: ¥45,000 / month

##### Sophia-Arrupe International Residence (Shinjuku City)

10 minutes to Sophia Campus  
Rent: ¥95,000 / month

##### Sophia Edagawa Men's Dormitory (Koto City)

40 minutes to Sophia Campus  
Rent: ¥70,000 / month

##### Sophia Higashi Nakano Women's Dormitory (Nakano City)\*

25 minutes to Sophia Campus  
Rent: ¥85,000~ / month ¥102,400~ with meals / month

##### Sophia Kasai International House Women's Dormitory (Edogawa City)\*

40 minutes to Sophia Campus  
Rent: ¥49,100~ / month

##### Student Hall "Luxlass" (Shinjuku City)\*\*

15 minutes to Sophia Campus  
Rent: ¥85,500 to ¥99,500 / month

##### Lestonnac Izumi Kan (Suginami City)\*\*\*

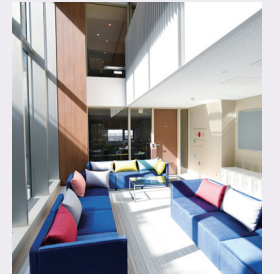
45 minutes to Sophia Campus  
Rent: ¥93,000 with meals / month

\*owned and managed by Kyoritsu Maintenance

\*\*owned and managed by J.S.B. Network

\*\*\*owned and managed by "Sisters of the Company of Mary, our Lady"

For more information, visit : <https://piloti.sophia.ac.jp/eng/housing/>



## Visa and more

#### Status of Residence ( Visa )

International students coming from abroad must have a "Student" status of residence or other appropriate status. Sophia will assist the accepted students to obtain a student status of residence.



#### Part-time Job

International students holding "Student" status of residence can work part-time up to 28 hours per week. Students need to have a permission from the Immigration Office in advance.

#### Insurance

International students are required to join the "National Health Insurance," which covers 70% of medical expenses.

#### Extra-curricular Activities

Hundreds of clubs and circles offer opportunities to join with other students who share a common interest in various things from sports to music, volunteer activities, cultural performances, current social issues, etc.

## Where Sophia Graduates Go

Graduates of Sophia are in great demand within both the Japanese and the international job markets because of their language skills, solid academic training, and global competency.



Students widely find employment in Japanese and foreign firms in both Japan and around the world. Students pursuing further education are admitted into top graduate schools and professional training programs worldwide.

Sophia Career Center provides various programs as well as individual counseling to help international students' job-seeking.