

KYUNGPOOK



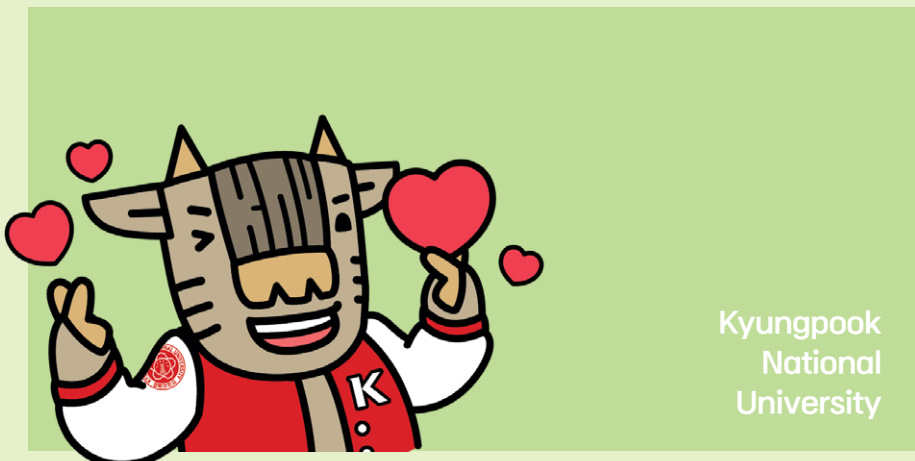
2024 Fall Semester Admission Guide

for International Graduate
Students

KNU KYUNGPOOK
NATIONAL UNIVERSITY

NATIONAL

UNIVER



Kyungpook
National
University

SITY

Contents

1. ABOUT KYUNGPOOK NATIONAL UNIVERSITY

03 History

03 Numbers

04 KNU Honors

05 Special Programs
for International
Students

2. ADMISSION GUIDE

06 Admission
Procedure

07 Academic
Departments

10 Eligibility

11 Application
Procedure

12 Required
Documents

14 Application Fee

14 Scholarships
(KINGS)

15 Important Notes
for Applicants

16 Contact Us

16 Tuition Fee

16 Dormitory Fee

3. APPENDICES

17 Performance Test for
Admission into the
Department of Music

19 Homepage
Addresses and
Office Contact
Number of Academic
Departments

1. ABOUT KYUNGPOOK NATIONAL UNIVERSITY



Daegu(Main) Campus



Sang-ju Campus



Medical Town



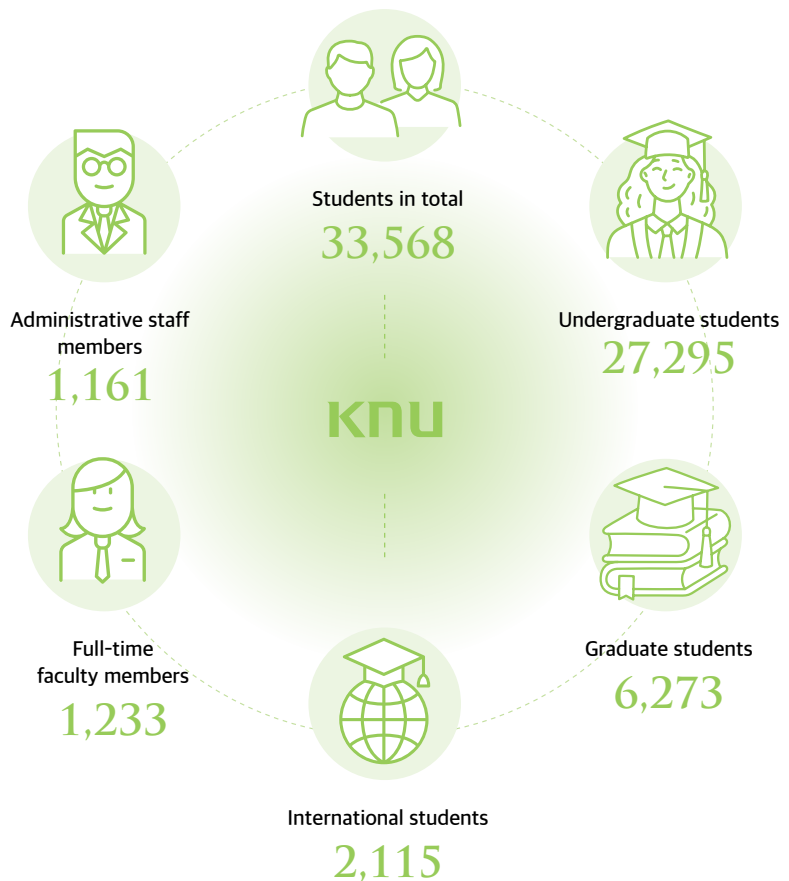
Medical Campus



History

- 1946**
Colleges of Education, Medicine and Agriculture in Daegu are upgraded to National Colleges
- 1951**
Colleges of Education, Medicine and Agriculture, Liberal Arts and Sciences, Law and Political Sciences combined to create Kyungpook National University
- 1953**
First graduate school established
- 2024**
Kyungpook National University is now comprised of 17 colleges and 3 schools, 98 Majors, 15 graduate schools, and 139 Research Centers

Numbers



KNU Honors

1 Credits

- Awarded IEQAS (International Education Quality Assurance System) accreditation for 10 consecutive years by the Korean Ministry of Education.
- Awarded **Excellent certified university** by the Korean Ministry of Education in 2023

- **1ST** among national universities in Korea

2023 QS World University Rankings

THE World University Rankings

THE Asia University Rankings

World University Rankings, Shanghai Jiao Tong University, Institute of Higher Education Evaluation

Center for World University Rankings (CWUR)

2 Student-Centered University

- 81.1 billion won in scholarships have been provided to KNU students, with 34,147 total beneficiaries and a 66.0% benefit rate.
- KNU offers opportunities to study at the best universities in the world. (2019~2023, Total 161 students studied at University of California, Berkeley; Oxford University; Yale University)
- The KNUPIA mobile application is available for KNU students. Its features include:
 - Mobile Student ID feature.
 - Access to campus facilities with a QR code feature.
 - Announcements made via push notifications and banners.
- KNU is the only national university that has a hospital-level health care center.
- KNU students can receive up to two medical check-ups and get vaccinated for free.



4 World-class Research Ability

- Prof. Jhung Sung-hwa of the KNU Chemistry Department: Named in the Top 1% of the World's Most Influential Researchers List (HCR) for five consecutive years (2018-2022).
- Prof. Lee InJung of the KNU Applied Bioscience Department: Named in the Top 1% of the World's Most Influential Researchers List (HCR) in 2023.
- Performance of SCI-level theses per professor ranked 1st among Korean
- Number of research papers published in international journals ranked 1st among Korean national universities.

3 Nurturing Creative Convergence Talent

- Intensive promotion in the fields of Convergence Education & Research
 - [Research] Artificial Intelligence, Robot and Smart System Engineering, Hydrogen & Renewable Energy, Data Science Technology, Agricultural Life Convergence, East Sea Rim Convergence, Light Convergence Global Leaders, etc.
- Convergence Department in ITA field: Integrated Bachelor's and Master's program (5 years)
- Development of a shared university platform for innovation
 - Establishment of a technological innovation network centered on universities in the metropolitan area, and establishment of a cooperation platform
 - Sharing university-centered technology infrastructure and promoting the establishment of joint ventures
- Systematization of student careers and psychological counseling
 - Systematic examination and counseling for new students
 - Operation of the SMART system for advisors for student counseling

5 Government Investments

- Approval for the KNU Campus Innovation Park Urban High-tech Industrial Complex:
 - Total project cost: KRW 52 billion
- Securing 97.4 billion won in government expenses for new facility projects: 39.9 billion won for IT Building no.2, 41.1 billion won for BTL animal hospital facilities and 16.4 billion won for the construction of a joint semiconductor research center.
- BK (Brain Korea) 21 Human Resources Development Projects - BK21 FOUR Project(2020.9~2027.8):
 - Manpower Training Project (180,000 million won): 21 education research groups and 8 education research leaders selected for funding
 - Support for research scholarships for participating graduate students (about 900 students per semester, 14 billion won)
- Highest level of governmental funding
- Funding for many other R&D projects (13 projects, totaling 419.8 billion won, including the Engineering Research Center, etc.)

Special Programs for International Students

Cultural Experience Program

Provides cultural experience programs that can enhance the understanding of Korea and improve adaptability to life in Korea.

(ex: Daegu City Tour, Cultural Trips, International Day, K-Pop Dance Festival, etc.)

Buddy Program

1:1 matching system between international students and senior KNU students in the same department, to help international students overcome difficulties they may experience while studying at KNU.

Assistance in Employment

To support international students, KNU offers various special lectures, such as employment training programs, internship programs, and employment information.

Orientation for New International Students

KNU holds an orientation for new incoming students to help them quickly adapt to life in Korea. Through the orientation, international students gain valuable information related to course registration, visa application, insurance, and student ID card acquisition.

Graduation Ceremony

KNU holds a graduation ceremony for international students who graduate from KNU every semester to celebrate the students' achievements.

International Programs

KNU offers a variety of international programs for international students, including exchange programs and summer school programs, and also provides many opportunities to study abroad.

1:1 Counseling for International Students

International students can receive counseling from both their home department office and the Office of International Affairs regarding any difficulties in their studies and personal life.

2. ADMISSION GUIDE

1 Admission Procedure

01. Schedule

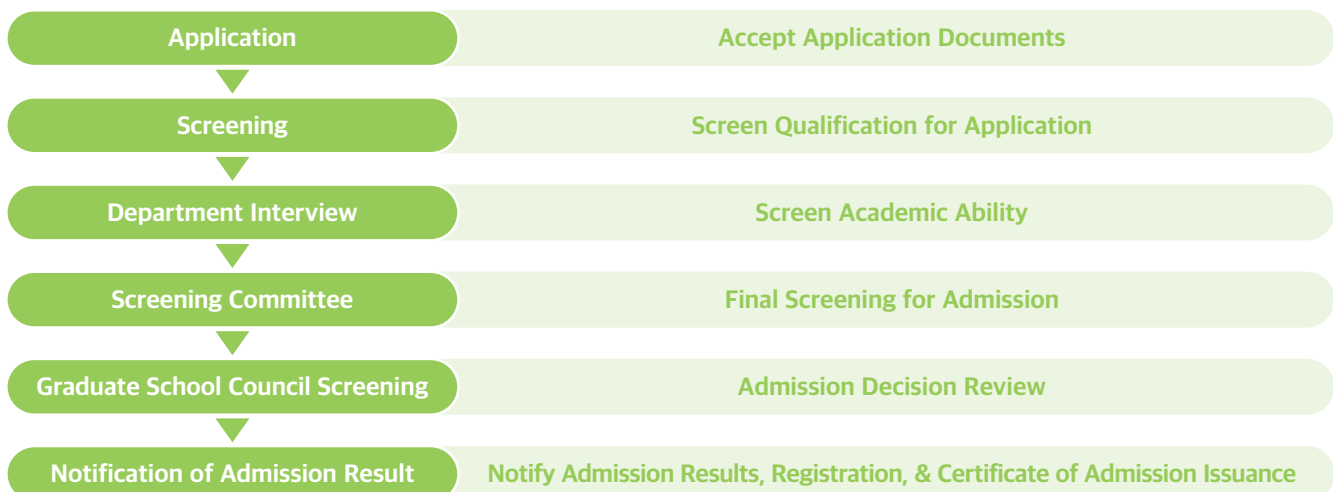
Kyungpook National University



Procedures	Time	Remarks
Online Application	April 15 (Mon) 09:00 to May 3 (Fri), 2024 by 18:00	Refer to KNU website (http://en.knu.ac.kr)
Submission of Application Documents	April 15 (Mon) 09:00 to May 9 (Thu), 2024 by 18:00	Office of International Affairs (Cheomseongin Student Futures Support Building 2F), Required documents: 5 ①~⑪
Screening Qualifications	May 10 (Fri) to 21 (Tue), 2024	Individuals who are not eligible will be notified.
Submission of TOPIK (93 th) Score Report	By May 30 (Thu), 2024 by 18:00	Only for applicants who submitted their test slip for the 93 th TOPIK
Department Interviews	May 23 (Thu) to 31 (Fri), 2024	Department to which students applied
Scholarship Students Selection	June 3 (Mon) to 11 (Tue), 2024	KNU OIA assigns the number of tuition fee waivers to department, and then professors will decide the recipients
Submission of Financial Documents	By June 21 (Fri), 2024	Applicants who are eligible for the department's scholastic ability test
Admissions Committee Screening	By June 26 (Wed), 2024	
Graduate School Council Screening	By July 3 (Wed), 2024	
Notification of Admission Results	By July 5 (Fri), 2024 <expected>	Notice by email
Registration	Middle of July, 2024	The exact schedule will be announced later.
Certificate of Admission	From middle of July, 2024	Office of International Affairs
		<ul style="list-style-type: none"> Overseas Residents: After paying tuition and submitting verified certificate of degree, it is sent to the address written on the application form. Residents in Korea: After paying tuition and submitting verified certificate of degree, please visit the KNU OIA.
Submission of Final Academic Verification Documents	By middle of July, 2024	

02. Flow Chart of Procedures

Kyungpook National University



2 Academic Departments (Number of admissions : based on a department limit)

01. Daegu Campus

* Department Availability : '○' Applicable, 'X' None Applicable

Daegu Campus	Series	Departments(Majors)	Department Availability			
			Master's	Doctoral	Combined Master's and Doctoral	
Graduate School	Humanities, Social Sciences	Korean Language & Literature	○	○	X	
		English Language & Literature	○	○	X	
		History	○	○	X	
		Philosophy	○	○	X	
		French Language & Literature	○	○	X	
		German Language & Literature	○	○	X	
		Chinese Language & Literature	○	○	○	
		Archaeological Anthropology	○	○	○	
		Japanese Language & Literature	○	○	X	
		Korean Literature in Classical Chinese	○	○	X	
		Russian Language & Literature	○	○	X	
		Political Science	○	○	X	
		Sociology	○	○	X	
		Geography	○	○	X	
		Library & Information Science	○	○	X	
		Psychology	○	○	X	
		Social Welfare	Major in Social Welfare Policy and Administration	○	○	X
			Major in Social Welfare Practice	○	○	X
		Media and Communication	○	○	X	
		Economics	○	○	○	
		International Trade	○	○	X	
		Business Administration	○	○	X	
		Law	○	X	X	
		Public Administration	○	○	X	
		Agricultural Economics	○	○	X	
		Education	○	○	X	
		Ethics Education	○	○	X	
		Korean Language Education	X	○	X	
		English Language Education	X	○	X	
	Social Studies Education	X	○	X		
	Humanistic Counseling	○	○	○		
	Translation of the Classic	○	X	X		
	Natural Sciences	Mathematics	○	○	X	
Physics		○	○	○		
Chemistry		○	○	○		
Life Science		○	○	X		
Geology		○	○	X		
Statistics		○	○	○		
Astronomy		○	○	○		
Atmospheric Science		○	○	○		

	Series	Departments(Majors)		Department Availability			
				Master's	Doctoral	Combined Master's and Doctoral	
Graduate School	Natural Sciences	Oceanography		○	○	○	
		Applied Biology		○	○	○	
		Food Science & Biotechnology	Major in Food Biotechnology		○	○	○
			Major in Food Biomaterials		○	○	○
			Major in Food Application Technology		○	○	○
		Horticulture		○	○	○	
		Agricultural Civil Engineering		○	○	○	
		Bio-industrial Machinery Engineering		○	○	○	
		Biofibers and Biomaterials Science		○	○	○	
		Forestry		○	○	○	
		Wood & Paper Science		○	○	○	
		Landscape Architecture		○	○	X	
		Mathematics Education		X	○	X	
		General Science Education		○	○	○	
		Home Economics Education		X	○	X	
		Child & Family Studies		○	○	X	
		Clothing & Textiles		○	○	X	
		Food Science & Nutrition		○	○	X	
		Nursing		○	○	○	
		Public Health *		X	○	X	
		Biomedical Science *		○	○	○	
		Dental Science		○	○	X	
		Pharmacy		○	○	○	
		Biomedical Convergence Science & Technology *		○	○	○	
		Integrative Biotechnology		○	○	○	
		Applied Biosciences		○	○	○	
		Integrative Natural Sciences for the East Sea Rim		○	○	X	
		Nanoscience & Nanotechnology		○	○	X	
	Energy Sciences		○	○	X		
	Engineering	Materials Science and Engineering	Major in Materials Science and Metallurgical Engineering		○	○	○
			Major in Advanced Materials Science and Engineering		○	○	○
		Mechanical Engineering		○	○	○	
		Architecture		○	○	X	
		Architectural, Civil, Environmental and Energy Engineering	Major in Architectural Engineering		○	○	X
			Major in Civil Engineering		○	○	X
			Major in Environmental Engineering		○	○	○
Major in Energy Engineering			○	○	○		
Applied Chemical Engineering		○	○	○			
Polymer Science and Engineering		○	○	○			
Textile System Engineering		○	○	X			
Computer Science and Engineering		○	○	○			
Artificial Intelligence		○	○	○			
Robot and Smart System Engineering		○	○	○			
Hydrogen & Renewable Energy		○	○	○			
Electronic and Electrical Engineering		○	○	○			
Data Convergence Computing		○	○	○			

	Series	Departments(Majors)		Department Availability		
				Master's	Doctoral	Combined Master's and Doctoral
Graduate School	Engineering	Science and Technology Acceleration Engineering	Major in Science & Technology Policy Administration	○	○	X
			Major in Science & Technology Practical Studies	○	○	X
			Major in Science & Technology Start-up	○	○	X
		Energy Convergence and Climate Change		○	○	X
		Spatial Information		○	○	X
		Carbon and Fiber Composite Materials		○	○	X
		Urban Regeneration		○	○	X
	Meta AI Convergence		○	○	X	
	Music & Arts & Physical Education	Music		○	○	X
		Korean Classical Music		○	○	X
		Fine Arts		○	○	X
		Design		○	○	○
		Physical Education		○	○	X
	Medicine	Medicine *		○	○	X
		Dentistry		○	○	X
		Veterinary Medicine		○	○	○
	Law School	Law		X	○	X
Graduate School of International Studies **	International Culture Studies	Major in Korean Culture Studies	○	X	X	
		Major in Korean Education as a Foreign Language	○	X	X	

*If you are applying to Public Health / Biomedical Science / Biomedical Convergence Science & Technology / Medicine Department, a Letter of Recommendation from your academic advisor or department head at KNU MUST also be submitted.

** The Graduate School of International Studies requires 5 semesters, mostly via evening classes.

※ Korean is the principal medium of coursework for most departments, so please check with each department office to confirm whether classes are available in English.

02. Sangju Campus

Kyungpook National University



* Department Availability : '○' Applicable, 'X' None Applicable

Sangju Campus	Series	Departments(Majors)		Department Availability		
				Master's	Doctoral	Combined Master's and Doctoral
Graduate School	Humanities, Social Sciences	Tourism		○	X	X
	Natural Sciences	Ecology Science		○	○	○
		Animal BT Science		○	○	○
		Ecology and Environmental System		○	○	○
		Food and Food Service Industry		○	X	X
		Dental Hygiene		○	○	X
		Vector Entomology		○	○	○
	Engineering	Automotive Engineering		○	○	○
		Disaster Prevention and Environmental Engineering		○	○	○
		Software		○	X	X
		Precision Mechanical Engineering		○	○	○
		Energy Materials & Chemical Engineering		○	○	○
		Textile & Fashion Design		○	X	X
		Convergence & Fusion system Engineering		○	○	○
	Arts & Sports	Advanced Science and Technology Convergence		○	○	○
		Leisure Sports		○	○	X
			Digital Fashion		○	○

※ Korean is the principal medium of coursework for most departments, so please check with each department office to confirm whether classes are available in English.

3 Eligibility

(※ Applicants who hold dual Korean citizenship are prohibited from applying. Citizenship status is determined as that which is held at the date of the application deadline.)

01. Master's Programs and Integrated Master's & Doctoral Programs



A. International applicants must meet all of the following requirements:

- ① Holds (or is about to hold) a Bachelor's degree.
- ② Must be a non-Korean national
- ③ Both parents must be non-Korean nationals.

B. Applicants of Korean origin (entire education completed abroad) must meet all of the following requirements:

- ① Holds (or is about to hold) a Bachelor's degree.
- ② Must be a non-Korean national.
- ③ Received their entire elementary, junior high, high school, and undergraduate education outside of Korea at a comparable and equivalent level to that which is provided in Korea.

02. Doctoral Programs

Kyungpook National University



A. International applicants must meet all of the following requirements:

- ① He or she holds (or is about to hold) a Master's degree
- ② He or she must be non-Korean nationals.
- ③ Both of his or her parents must be non-Korean nationals.

B. Applicants of Korean origin (Entire Education Completed Abroad) must meet all of the following requirements :

- ① Holds (or is about to hold) a Master's degree
- ② Received their entire elementary, junior high, high school, and undergraduate education outside of Korea at a comparable and equivalent level to that which is provided in Korea.
- ③ Must be a non-Korean national.

03. Eligibility for Language Proficiency

Kyungpook National University



A. Applicants who want to apply for the following departments MUST meet required conditions :

(※ Applicants **MUST submit their Korean language proficiency test results by May 9 (Thu), 2024, along with their other application documents.**)

※However, those who will take the 93th TOPIK exam can apply with their test identification slip. In this case, applicants must also submit their TOPIK certificate for the required level (or higher) by May 30 (Thu), 18:00, 2024. Applicants who cannot submit the required level of TOPIK certificate in time will be rejected.

Departments		Eligibility for Language Proficiency
Graduate School	Korean Language & Literature / Psychology	TOPIK level 5 or higher
	English Language & Literature / History / Philosophy / German Language & Literature / Korean Literature in Chinese Characters / Translation of the Classic / Sociology / Geography / Social Welfare (Major in Social Welfare Policy and Administration, Social Work Practice) / Media and Communication / Business Administration / Public Administration / Political Science / Design (Integrated Master's & Doctoral Programs)	TOPIK level 4 or higher
	Economics / International Trade / Fine Arts / Science and Technology Acceleration Engineering	TOPIK level 3 or higher
	Nursing / Dental Hygiene	Meet both ① and ② stated in 3. Eligibility-B
Graduate School of International Studies	Korean Culture Studies	TOPIK level 3 or higher
	Teaching Korean as a Foreign Language	TOPIK level 5 or higher

※ If any required documents are found to be false or counterfeit, the applicant's admission will be canceled.

B. Except for the departments listed above, applicants must provide one of the following as proof of language proficiency:

- ① Korean language proficiency: a TOPIK certificate for Level 3 or higher
- ② English language proficiency: a score report from a recognized English proficiency test such as: TOEFL iBT (71), IELTS (5.5), CEFR (B2), NEW TEPS (326) or higher
- ③ Native speakers of English
 - *Applicants do not need to submit an English score report if they are from a country whose official language is English (USA, UK, Canada, Australia, New Zealand, Republic of South Africa, and Ireland).
- ④ Applicants who have completed all years of undergraduate (for Master’s applicants) or Master’s (for Doctoral applicants) study fully in Korean or English, and can submit official documents from their university proving that courses were taught fully in Korean/English.
- ⑤ Applicants who do not have an authorized language proficiency test score, but have the required ability to study in Korean or English.
 - * In the cases of ④ and ⑤ above, each department will evaluate each applicant’s language proficiency during the department interview, and the department will submit a ‘Confirmation Letter of English or Korean Proficiency’ directly to the Office of International Affairs (OIA). (The applicant should not submit it; the department should submit it directly to KNU OIA.)

4 Application Procedure

1. Application Period

A. On-line Application: April 15 (Mon) to May 3 (Fri), 2024 by 18:00

- ① Application website: To be announced later on the KNU website
 - ※ Website Address: <https://en.knu.ac.kr/admission/foreign02.htm> (“On-line Application” tab))
- ② Application Number: Automatically created after you complete the online application.

B. Submission of Applications: All required documents should be submitted to the Office of International Affairs in person or by post.

- ① Submission Period: April 15 (Mon) to May 9 (Thu), 2024 by 18:00
- ② Where to Submit: The Office of International Affairs (Cheomseongin Student Futures Support Building 2F)
- ③ How to Submit: Applicants should submit their completed and printed application forms downloaded from the online application site, along with required documents ①~⑩ in section 5 Required Documents.

2. Qualification Screening

A. Screening Period: May 10 (Fri) to May 21 (Tue), 2024

B. Screening Method: Examination of the suitability of applicants’ academic background and language proficiency, so as to be deemed as “qualified” or “unqualified.”

3. Department Screening (Interview)

A. Screening Period: May 23 (Thu) to May 31 (Fri), 2024

B. Screening Method: In-person (face-to-face) interviews or non-face-to-face (video) interviews according to each department’s discretion

* Applicants applying for the following departments should participate in face-to-face interviews:

Graduate School	Korean Literature in Chinese Characters / Geography / Psychology / Social Welfare(Major in Social Welfare Policy and Administration, Social Work Practice) / Translation of the Classic
------------------------	---

C. Each department will notify its respective applicants of the interview schedule and location.

D. Comprehensive evaluation of each candidate’s previous degree performance, language eligibility, study plan, and major knowledge will be performed, so as to be deemed as “qualified” or “unqualified” for each of the major to which they have applied.

E. After language eligibility is screened, a Confirmation Letter of English or Korean Proficiency will be issued for all qualified applicants.

5 Required Documents

01. Application Documents (Do after completing Online Application)



* '○': Required documents, '△': Only if applicable (see 'Note')

Required Documents	Required	Note
① Completed Application Form	○	Print the online Application Form and submit it with the other required documents.
② Statement of Purpose and Study Plan	○	KNU format on the KNU website (https://en.knu.ac.kr/admission/foreign02.htm) in English or Korean
③ One Letter of Recommendation from a Professor at a Previously Attended University or a Prospective Professor at KNU	△	1) Applicants who apply for the Department of Public Health; Biomedical Science; Biomedical Convergence Science & Technology; or Medicine MUST submit a Letter of Recommendation from the prospective professor or department head at KNU. 2) Applicants who graduated from KNU for Bachelor's degree and want to apply for Excellent KINGS scholarship MUST submit a Letter of Recommendation letter from their previous academic advisor. *See the format on the KNU website: (https://en.knu.ac.kr/admission/foreign02.htm)
④ Degree Certificate or Certificate of (Expected) Graduation from Universities Attended Previously	○	*Transfer students with a Bachelor's degree should submit their degree document before transferring. *Applicants for a doctoral course should submit BOTH their Bachelor's and Master's degree documents. *Applicants of Korean origin (entire education completed abroad) should submit certificates of their entire education, from elementary to university.
⑤ Official Transcripts from Universities Attended Previously	○	*Transfer students with a Bachelor's degree should submit their transcript document before transferring. *Applicants for a doctoral course should submit BOTH their Bachelor's and Master's transcripts. *Applicants of Korean origin (entire education completed abroad) should submit certificates of their entire education, from elementary to university.
⑥ Language Proficiency Test Results (TOPIK, IELTS, TOEFL iBT, etc.)	○	Score Report (Transcript) (Original or Copy) *Only accepted with valid expiry date (issued after May 5, 2022). *We do not accept TOEFL ITP test results. *Test slip for the 93th TOPIK
⑦ Certificate of Enrollment and Transcript at a Korean Language Institute	△	*Only students who're holding D-4 visa in Korea during the application period.
⑧ Copy of Applicant's Alien Registration Card (front and back)	△	*For Korean visa holders
⑨ Copy of Applicant's Passport	○	Page with photo and passport number *Please refer to the ※Note below for details.
⑩ Full Birth Certificate or Family Census Register	○	Official documents indicating parents' nationality and relationship with applicant *Please refer to the ※Note below for details.
⑪ Portfolio	○	Applicants applying for the Department of Fine Art or Design

- 1) Applicants to the School of Business Administration and the Department of Dentistry should state their field of interest in their Statement of Purpose and Study Plan. (Ex: Accounting, Marketing, etc. – Business Administration / Oral Pathology, Orthodontics, etc – Dentistry)
- 2) Applicants to the Department of Music must prepare a practical test for the interview. If applicants are out of Korea, should submit a video of their performance on USB with other application documents. (Refer to page 16-17 <Appendix>.)
- 3) Applicants to the Department of Fine Art or Design must submit ⑪ a Portfolio (size A4, 10 pages) together with their other application documents.
- 4) Applicants to the Department of Fine Art and Music should state their field of interest in their Statement of Purpose and Study Plan.

※ **Note :**

- ① All documents should be in Korean or English. Documents in other languages should be accompanied by a notarized Korean or English translation.
- ② All required documents must be submitted in person or by post. (Email submission is not permitted.)
- ③ All required documents must be submitted in the order of the list above. **(Do not use staples, clips, etc.)**
- ④ Prospective graduates must submit their Certificate of Expected Graduation indicating their expected graduation date (year and month) when applying for admission.
 - Certificate of Graduation: The final Certificate of Graduation (completed) should be submitted by the middle of July, 2024.
 - Certificate of Transcript: After graduation, the final transcript must be submitted to the KNU OIA by the middle of July, 2024.
- ⑤ Passport: The passport expiration date must be after the semester start date.
 - Applicants with Uzbekistan nationality must submit a new type passport that is available for overseas travel.
 - If your parents are dead (or divorced), death (or divorce) certificate should be submitted.
- ⑥ Documents showing the relationship between the applicant and his or her parents:
 - The document should state the nationality and relationship between the applicant and his or her parents. (Documents should be notarized in Korean or English if the original documents are in other languages.)
 - If your parents are deceased (or divorced), a death (or divorce) certificate should be submitted.

<Examples of Family Census Register by Country>

Philippines: Family Census; Indonesia: Kartu Keluarga (KK); Bangladesh: Birth Certificate; Vietnam: So Ho Khau or Giay Khai Sinh; Mongolia: Certificate of Family Relations; Pakistan: Family Certificate; Sri Lanka: Birth Certificate; Myanmar: Family Relations Certificate; Nepal: Birth Certificate; Kyrgyzstan · Kazakhstan · Uzbekistan · Ukraine · Thailand: Birth Certificate

- ⑦ Documents in another language (except Korean and English) should be accompanied with a notarized translation in Korean or English.
- Only certificates/documents notarized within 6 months before submission will be accepted.

02. Financial Documents

Kyungpook National University



A. For whom : Applicants who have passed the Department Interview

B. Submission Period : After passing the Department Interview until June 21 (Fri), 2024

C. Required documents to submit **MUST be one of the following and meet all requirements:**

① **Original bank certificate of deposit balance (in English) showing a minimum of 16 million KRW**

* According to the Ministry of Justice's and Education Guidelines

* Submit a bank deposit balance certificate in the **applicant's own name** or **a parent's name**.

* Submit a Certificate of Employment or Business Registration Certificate (English or Korean) of the parent when submitting the balance certificate in the parent's name.

* Note that bank deposit balance certificates under other names (friends, relatives other than the applicants' parents, etc.) cannot be accepted.

* Issued within 30 days prior to the submission date

② **Scholarship Certificates from Other Organizations**

* If applicants are financially supported from their own countries' government or another organization.

* If the total amount of scholarship is insufficient for KRW 16 million, additional financial guarantee for the shortfall is required.

* If an academic advisor is serving as the the financial guarantor, the academic advisor's Certificate of Financial Support and his/her Employment Certificate can be substituted for the above documents. (The official KNU format will be provided to academic advisors directly upon request, and should be submitted directly from the academic advisor to the KNU OIA).



A. For whom : Final successful applicants

B. Submission Period : by the middle of July, 2024

C. Required documents : Successful applicants must submit one of the following documents :

- ① **Apostille Certificate** of your previous academic documents
- ② **Original Documents verified by the Korean Embassy in other countries or the Embassy in Korea**
 - * Simple photocopies or notarized copies of the apostilled (or consular confirmed) documents are NOT accepted. However, a certified true copy (등본인증) issued by the Korean Embassy or a certificate true copy issued by a government agency that issued the original apostilled document will be accepted.
- ③ Documents **confirmed by the China Academic Degree (CHSI) & Graduate Education Development Center (CDGDC)**

(Only for applicants who hold a degree from universities in China)

 - * Certificate of Admission can be issued after submitting all verification documents stated above.
 - * Failure to submit all verification documents by July. 26th, 2024, may result in cancellation of admission.
 - * Applicants who graduated from universities in Korea may submit a copy of their degree instead of a verified copy.

6 Application Fee : KRW 80,000

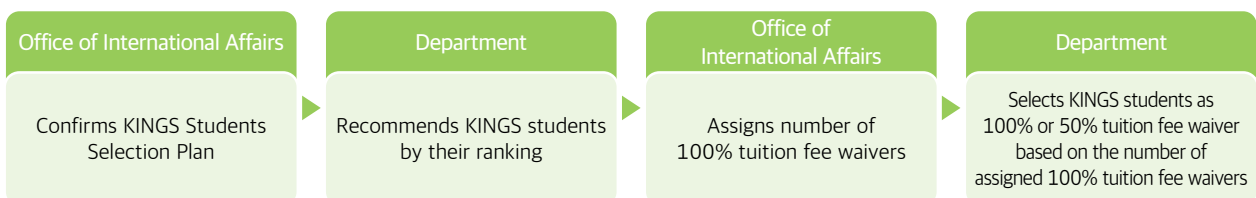
1. The application fee should be paid using the on-line payment system.
 2. Failure to pay the application fee during the application period will result in cancellation.
 3. You will receive an Application Number after payment of the Application Fee.
- * NOTE: It is not possible to revise the contents of the application after paying the Application Fee.

7 Scholarships

1. KINGS: KNU International Graduate Scholarships

- 1) **Selection Period:** Before the beginning of every semester (up to 4th semester for Master's and Doctoral programs, and up to 8th semester for Combined Master's and Doctoral programs)
- 2) **Benefits:** 100% or 50% of tuition fees waived
- 3) **Number of Selected Applicants**
 - A. New international students: up to 70 applicants based on 100% tuition payment
 - B. Enrolled international students: up to 210 applicants based on 100% tuition payment
- 4) **Qualifications**
 - A. New International Students
 - A-1) Students recommended by their department after screening and being ranked in order
 - A-2) Up to 70 applicants based on 100% tuition payment
 - B. Enrolled International Students
 - B-1) International graduate students registered for next semester who have received a B0 grade or higher for the previous semester
 - B-2) Up to 210 applicants based on 100% tuition payment
 - * Scholarship beneficiaries are selected every semester following the screening procedure.
 - * Except for case where the GPA average is indicated as S/U by completing only the thesis research and research ethics course.

5) Selection Procedure



2. Excellent KINGS: Excellent KNU International Graduate Scholarship

- 1) Selection Target: Freshmen
- 2) Benefit: Full tuition fees waived for the first semester
- 3) Number of students selected: Up to 30
- 4) Qualifications: Applicants must meet one of following conditions.
 - A. Outstanding overseas university graduate based on the following World University Rankings:
 - THE (Times Higher Education) World University Rankings Top 500
 - QS World University Rankings Top 500
 - B. Graduate of KNU and entering a Master's or combined Master's and Doctorate integrated course
 - Must receive a Letter of Recommendation from the (expected) advising professor and have graduated with a grade of B0 (3.0) or higher
 - C. Strong Language Proficiency
 - (Korean) TOPIK Level 6
 - (English) TOEFL iBT 100 points, IELTS 7.0, CEFR C1, New TEPS 392 points (or higher)

8 Important Notes for Applicants

1. If any required documents are found to be false or counterfeit, the applicant's admission will be canceled.
2. The Office of International Affairs (OIA) is not responsible for the cancellation of admission due to incorrect contact information (such as wrong address or phone number, etc.).
3. If an applicant's visa is not issued or is rejected, his or her admission will be canceled.
4. Applicants receiving a scholarship of more than USD 16,000 from another institution are not required to submit a Certificate of Financial Guarantee; however, they must submit a Certificate/Letter of Confirmation from the institution that will pay their tuition during their period of study at Kyungpook National University.
5. Submitted documents and application fees will not be returned to applicants. (Original copies of Certificates of Degree can be returned upon request after completion of the screening process.)
6. As many applications will be expected on the last day of online application, please complete the application as soon as possible before the deadline.
7. An Application Number for each applicant will be created after your online application, and it will be used frequently during the application process, so please make note of it.
8. If an applicant does not have sufficient academic ability, he or she may not be selected.
9. International students who are admitted to the university or enrolled at KNU must have Korean health insurance. According to the National Health Insurance Act and its Enforcement Decree, from March 1, 2021, international students who stay in Korea for more than 6 months must have National Health Insurance (국민건강보험) in Korea.
10. Further details, if not stated in this Guide, will be in accordance with the KNU Office of International Affairs. These Admission Guidelines were originally written in Korean and translated into English and Chinese. Should there be any discrepancies between them, the Korean version supercedes all translated versions.
11. The personal information of applicants will be collected and used for the admission process as shown below:
 - Information Collected and Used: Name, Alien Registration No., Passport No., Address, Name of School of Graduation, Telephone No., Mobile Phone No., Email, Language Test Grades, Period of Overseas Education, Period of Stay, Account No., etc.
 - Purpose of Collection and Use: Admission Process, Visa, Academic Affairs, Scholarships, Statistics, Selection of Dormitory Residents, Admission Instructions

Receiver of Information		Provided Information	Purpose of Provision	Holding Period
KNU	University Headquarter (Registrar Office, Office of Student Affairs, Finance department, etc.)	Name, Alien Registration No., Address, Telephone No., Application Information, Name of School of Graduation, etc.	Creating the school register, Selection of Scholarship students, Statistics, Tuition fee payment, etc.	Until the purpose of process is achieved.
	College, School and Department office	Name, Telephone No., Name of School graduated from, Language grades, etc.	Conducting the interview, etc.	
	Dormitory Office	Name, Alien Registration No., Information of Application, etc.	Selection of Dormitory residents, Sending the instructions, etc.	
	KNU Language Institute, IT Education Center	Name, Telephone No., etc.	Program Introductions	
Third Party	Ministry of Justice, Immigration office	Name, Alien Registration No., Address, Telephone No., Information of application, Grades, Name of School graduated from, etc.	Issuing Certificates of Admission, Immigration Services, etc.	
	Korea Council for University Education	Name, Alien Registration No., Application Information, etc.	Using the Online Application System, etc.	

9 Contact Us

- Address :** Office of International Affairs, Kyungpook National University (Cheomseongin Student Futures Support Building - Building No. 108) 80 Daehak-ro, Buk-gu, Daegu, 41566, Republic of Korea
- Homepage :** <https://en.knu.ac.kr>
- Contact :** (Tel) +82-53-950-2435, (Fax) +82-53-950-2419, (E-mail) admission@knu.ac.kr

10 Tuition Fee

1. Daegu Campus (per semester as of 2024)

(per semester as of 2024)

Department Type	Entrance Fees(KRW)	General Tuition(KRW)	Total(KRW)
Humanities, Social Sciences	189,000	2,439,000	2,628,000
Natural Sciences, Physical Education (including Department of Nursing, Biomedical Science, Dental Science)		3,156,000	3,266,000
Engineering		3,222,000	3,411,000
Music & Arts		3,888,000	4,077,000
Music & Arts(Korean Classical Music, Music)		4,017,000	4,206,000
Medicine, Dentistry (Master, Doctor)		4,662,000	4,851,000
Veterinary Medicine (Master, Doctor)		4,456,000	4,645,000
Pharmacy		3,507,000	3,696,000
Law School(Doctor)		186,500	2,292,000
Graduate School of International Studies	189,000	2,580,000	2,769,000

* Note : Total amounts are subject to change.

2. Sangju Campus (per semester as of 2024)

(per semester as of 2024)

Department Type	Entrance Fees(KRW)	General Tuition(KRW)	Total(KRW)
Humanities, Social Sciences	189,000	2,439,000	2,628,000
Natural Sciences, Physical Education		3,156,000	3,345,000
Engineering		3,222,000	3,411,000
Arts		3,888,000	4,077,000

* Note : Total amounts are subject to change.

11 Dormitory Fees

1. Daegu Campus (<http://dorm.knu.ac.kr>)

	Bongsa/ Hwamok-Gwan (Double)	Cheomsung- Gwan (Double)	Myungyui-Gwan (Double)	Myungyui-Gwan (Single)	Note	
Room Fees (KRW)	617,700	693,400	798,200	1,356,400	* Dormitory expenses are separately charged during the vacation period. * Students assigned to Cheomsung-Gwan use the Cheomsung-Gwan Cafeteria. * Total amount are subject to change.	
Meals/Day	1 meals/day	1.5 meals/day	2 meals/day	2.5 meals/day	3 meals/day	Per 1 Ticket
Meal Plans (KRW)	499,800	676,400	826,000	944,000	988,400	5,000

* Students majoring in Medicine and Dentistry are assigned to Myungyui-Gwan (Medical Campus).

2. Sangju Campus (https://dorm.knu.ac.kr/scdorm/_new_ver/)

	Chungwoon-Gwan (Male, Double)		Noak-Gwan (Female, Double)	Note
Room Fees (KRW)	691,900		691,900	* Dormitory expenses are separately charged during the vacation period. * Total amounts depend on meal selection. * Total amounts are subject to change.
Meals/Day	1 meal/day	2 meals/day	3 meals/day	
Meal Plans (KRW)	522,000	951,200	1,183,200	

3. APPENDICES

1 Performance Test for Admission into the Department of Music

- The Departmental Assessment (Student Ability Test) for the Department of Music is a performance test, and applicants must prepare their test pieces (see below) and perform them in person. (The Department will notify applicants of the test schedule after the eligibility check period.)
- If an applicant is not residing in Korea during the Departmental Assessment Period, one may submit a video recording of a musical performance of one's test piece. However, one can only submit a video that was recorded during the application period.
- In case the submitted video was fake or forged in any way, one's permission for admission can be revoked.
- The schedule of the Departmental Assessment for Composition or Theory majors will be notified at a future date.

1. Master's

Major	Test Piece	Time
Singing	1. Choose one song from an opera or oratorio 2. Sing two songs from among German, French, Italian, English and American art songs randomly selected at the time of Performance Test	
Piano	1. One song from Beethoven Sonata (whole movements) 2. One free song from romantic or 20 th century works songs (whole movements for sonatas, whole songs for suites or variations)	
Composition	Compose one piano piece in the given theme (free style)	180 mins.

Orchestra	Violin	One piece from W. A. Mozart Concerto Op. 3, Op. 4, Op. 5, and F. Mendelssohn Concerto in E Minor (whole movements including Cadenzas)	
	Cello	One piece from J. Haydn Concerto in D Major (Gendron Cadenza) or E. Lao Concerto in D Minor (only the first movement)	
	Others	Free choice of one high level concerto (whole movements including Cadenzas)	
Theory	Analyze Mozart Piano Sonata : analysis of chord, analysis of form		90 mins.

* Note 1. Performances must be played without looking at the score.

* Note 2. Applicants for Singing and Orchestra must be accompanied by a pianist.

* Note 3. Applicants must bring their own instruments (except for Piano).

2. Doctoral

Major	Test Piece	Time	
Singing	Applicants must sing at least one art song from each of 6 categories (about 30 minutes total): 1: German; 2: French; 3: Italian; 4: English/American; 5: Oratorio (Cantata, Motet, etc.); 6: Opera Aria * Categories 1-4 must include one song of at least two different eras; and songs from categories 5-6 must include one song in a different language.		
Piano	Solo program of three ages for more than 60 minutes (including Sonata whole movements)		
Composition	Compose a programmatic song by given them (Piano trio)	180 mins.	
Orchestra	Violin	1. J. S. Bach unaccompanied Sonata ① No. 1 G Minor Op. 1, Op. 2 Movement ② No. 2 A Minor Op. 1, Op. 2 Movement ③ No. 3 C Major Op. 1, Op. 2 Movement *Choose 1 from ①,②,③ above. 2. Choose 1 from N. Paganini Caprice Op. 1 No. 1, 5, 9, 11, 17, 24. 3. Choose 1 from W. A. Mozart, L. v. Beethoven Sonata (whole movements). 4. Choose one from F. Mendelssohn, L. v. Beethoven, P. I. Tchaikovsky, and J. Sibelius Concerto (whole movements).	
	Cello	1. J. S. Bach unaccompanied suite ① No. 1 Prelude, Sarabande, Gigue ② No. 2 Prelude, Sarabande, Gigue ③ No. 3 Prelude, Sarabande, Gigue *Choose 1 from ①,②,③ above. 2. Choose 2 from D. Popper Etude Op. 73 No. 7, 8, 17, 22, 35. 3. Choose 1 from L. v. Beethoven Sonata (whole movements). 4. Choose 1 from Romantic Concerto (whole movements).	
	Flute	1. Choose two from N. Paganini 24 Caprices Op.1 (International version) 2. J. S. Bach Partita in A Minor (Bärenreiter version) 3. One song of Romantic Concerto (Whole movements)	
	Oboe	1. Baroque Sonata (whole movements) 2. W. A. Mozart Concerto in C Major K. 314 (whole movements, including cadenzas) 3. Choose 1 from Romantic Concerto (whole movements).	
Theory	Analyze Beethoven's middle period piano sonata works: Analysis of chords, analysis of forms	90 mins.	

* Note 1. Singing, Piano, Violin, Cello, Flute, Oboe Major Performances must be played without looking at the score.

* Note 2. Applicants for Singing and Orchestra must be accompanied by a pianist.

* Note 3. Applicants must bring their own instruments (except for Piano).

2 Homepage Addresses and Academic Department Office Contact Numbers

01. Daegu Campus

Series	Majors		Homepage Address	Office Phone No. (+82-53-950-)	
Humanities, Social Sciences	Korean Language & Literature		http://korean.knu.ac.kr	5106	
	English Language & Literature		https://enenglish.knu.ac.kr	5120	
	History		https://khistory.knu.ac.kr/	5135	
	Philosophy		http://philosophy.knu.ac.kr/	5148	
	French Language & Literature		http://france.knu.ac.kr/	5159	
	German Language & Literature		http://german.knu.ac.kr/	5169	
	Chinese Language & Literature		http://chinese.knu.ac.kr	5178	
	Archaeology and Anthropology		http://aran.knu.ac.kr/	5186	
	Japanese Language & Literature		http://japan.knu.ac.kr/	6150	
	Korean Literature in Classical Chinese		http://hanmun.knu.ac.kr/	6160	
	Russian Language & Literature		http://knurussian.kr/	6170	
	Political Science		http://politics.knu.ac.kr/	5206	
	Sociology		http://socio.knu.ac.kr/	5218	
	Geography		http://geog.knu.ac.kr/	5227	
	Library & Information Science		https://lis.knu.ac.kr/	5236	
	Psychology		http://psy.knu.ac.kr/	5244	
	Social Welfare		Major in Social Welfare Policy and Administration	http://knusw.knu.ac.kr/	5251
			Major in Social Work Practice		
	Media and Communication		https://mediacomm.knu.ac.kr/	5259	
	Ethics Education		http://ethedu.knu.ac.kr/	5868	
	Economics		http://econ.knu.ac.kr/	5428	
	International Trade				
	Business Administration		http://biz.knu.ac.kr/	5439	
	Law		http://lawschool.knu.ac.kr	5456	
	Public Administration		http://puad.knu.ac.kr/	3733	
	Agricultural Economics		http://frecon.knu.ac.kr/	5765	
	Education		http://edu.knu.ac.kr/	5806	
	Korean Language Education		http://koredu.knu.ac.kr/	5821	
	English Language Education		http://enged.knu.ac.kr/	5829	
	Social Studies Education		http://ilsa.knu.ac.kr/	5856	
Humanistic Counseling		http://inca.knu.ac.kr	6121		
Translation of the Classics		http://cafe.daum.net/knutranslation	6160		

Series	Majors	Homepage Address	Office Phone No. (+82-53-950-)	
Natural Sciences	Mathematics	http://math.knu.ac.kr/	7325	
	Physics	https://physics.knu.ac.kr/	5316	
	Chemistry	http://chem.knu.ac.kr/	5329	
	Life Science	https://biotechn.knu.ac.kr/ https://bioen.knu.ac.kr/	5381	
	Geology	http://geology.knu.ac.kr/	5354	
	Statistics	http://stat.knu.ac.kr http://staten.knu.ac.kr	5364	
	Astronomy	http://hanl.knu.ac.kr/	6360	
	Atmospheric Science			
	Oceanography	http://ocean.knu.ac.kr/	5396	
	Applied Biology	http://agbl.knu.ac.kr/	5758	
	Food Science & Biotechnology	Major in Food Biotechnology	https://foodbiotechnology.knu.ac.kr	5772
		Major in Food Biomaterials	https://foodbm.knu.ac.kr	5750
		Major in Food Application Technology	http://foodbio.knu.ac.kr	7761
	Horticulture	http://horti.knu.ac.kr/	5721	
	Agricultural Civil Engineering	http://acen.knu.ac.kr/	5730	
	Bio-industrial Machinery Engineering	https://bime.knu.ac.kr/	5790	
	Biofibers and Biomaterials Science	http://biofiber.knu.ac.kr/	5737	
	Forestry	http://forestry.knu.ac.kr/	5744	
	Wood & Paper Science	http://wood.knu.ac.kr/	5795	
	Landscape Architecture	http://land.knu.ac.kr/	5779	
	Mathematics Education	http://mathedu.knu.ac.kr/ https://matheduen.knu.ac.kr/	5882	
	General Science Education	http://physed.knu.ac.kr/ http://chemedu.knu.ac.kr/ http://bioedu.knu.ac.kr/ http://earthed.knu.ac.kr/	5909	
	Home Economics Education	http://homeedu.knu.ac.kr/ http://homeeduen.knu.ac.kr/	5923	
	Child & Family Studies	http://child.knu.ac.kr/	6210	
	Clothing & Textiles	http://fashion.knu.ac.kr/	6220	
	Food Science & Nutrition	http://fsnu.knu.ac.kr/	6230	
	Nursing	http://nurs.knu.ac.kr	+82-53-420-4938	
	Public Health	http://health.knu.ac.kr	+82-53-420-4860	
	Biomedical Science	http://enbiomed.knu.ac.kr/	+82-53-420-4910	
	Dental science	https://dent.knu.ac.kr/eng	+82-53-660-6805	
	Pharmacy	https://pharmacy.knu.ac.kr/	3684	
	Biomedical Convergence Science & Technology	https://bst.knu.ac.kr/	3884	
Integrative Biotechnology	https://intbiology.knu.ac.kr/	7376		
Applied Biosciences	https://agrodatbk21.knu.ac.kr/	5714		
Integrative Natural Sciences for the East Sea Rim	https://esr.knu.ac.kr	4597		
Nanoscience and Nanotechnology	http://nst.knu.ac.kr/	5900		
Energy Sciences	https://physics.knu.ac.kr	5316		

Series	Majors		Homepage Address	Office Phone No. (+82-53-950-)
Engineering	Materials Science and Engineering	Major in Materials Science & Metallurgical Engineering	https://metal.knu.ac.kr/	5559
		Major in Electronic Materials Engineering	http://emse.knu.ac.kr/	5631
	Mechanical Engineering		http://me.knu.ac.kr	5569
	Architecture		http://arch.knu.ac.kr	5590
	School of Architectural, Civil, Environmental and Energy Engineering	Major in Architectural Engineering	http://arch.knu.ac.kr	5590
		Major in Civil Engineering	http://civil.knu.ac.kr/main/	5607
		Major in Environmental Engineering	https://env.knu.ac.kr/ https://enve.knu.ac.kr/	6580
		Major in Energy Engineering	http://energy.knu.ac.kr	8970
	Chemical Engineering and Applied Chemistry		http://appchem.knu.ac.kr http://cheme.knu.ac.kr	5581
	Polymer Science and Engineering		http://polymer.knu.ac.kr/	5623
	Textile System Engineering		http://textile-eng.knu.ac.kr	5638
	Computer Science and Engineering		http://computer.knu.ac.kr	6420
	Artificial Intelligence		https://ai.knu.ac.kr/	6531
	Hydrogen & Renewable Energy		http://hnrenergy.knu.ac.kr/	3884
	Robot and Smart System Engineering		https://robot.knu.ac.kr/	3884
	Electronic and Electrical Engineering	Electronics	http://see.knu.ac.kr/eng/	6558
		Electrical	http://electric.knu.ac.kr/	5600
	Data Convergence Computing		https://bigdata.knu.ac.kr/	6446
	Science and Technology Acceleration Engineering	Major in Science & Technology Policy Administration	https://stae.knu.ac.kr/	7514
		Major in Science & Technology Practical Studies		
		Major in Science & Technology Start-up		
	Energy Convergence and Climate Change		https://home.knu.ac.kr/HOME/climate/	6692
	Spatial Information		https://gis.knu.ac.kr/	7514
Carbon and Fiber Composite Materials		http://textile-eng.knu.ac.kr	5638	
Urban Regeneration		http://urbanre.knu.ac.kr	7314	
MetaAI Convergence		-	6531	
Music & Arts & Physical Education	Music		http://music.knu.ac.kr/	5656
	Korean Classical Music		http://kmusic.knu.ac.kr/	5670
	Fine Arts		http://arts.knu.ac.kr/	5680
	Design		http://vcd.knu.ac.kr/	5694
	Physical Education		http://sport.knu.ac.kr/	5930
Medicine	Medicine		http://med.knu.ac.kr	+82-53-420-4910
	Dentistry		https://dent.knu.ac.kr	+82-53-660-6805
	Veterinary Medicine		http://vet.knu.ac.kr/	5957
Law School	Law		https://lawschool.knu.ac.kr/	5456
Graduate School of International Studies	International Culture Studies	Major in Korean Culture Studies	http://gsis.knu.ac.kr/	6127
		Major in Korean Education as a Foreign Language		

Series	Majors	Homepage Address	Office Phone No. (+82-54-530-)
Humanities, Social Sciences	Tourism	http://tour.knu.ac.kr/	1380
	Ecology Science	https://entomology.knu.ac.kr/	1210
Natural Sciences	Animal BT Science	https://btbk21.knu.ac.kr	1220
	Ecology and Environmental System	http://sees.knu.ac.kr	1240
	Food and Food Service Industry	http://ffsi.knu.ac.kr	1300
	Dental Hygiene	http://dehy.knu.ac.kr	1420
	Vector Entomology	https://entomology.knu.ac.kr/	1210
	Automotive Engineering	http://auto.knu.ac.kr/	1136
Engineering	Disaster Prevention and Environmental Engineering	http://cdue.knu.ac.kr/	1440
	Software	http://se.knu.ac.kr/	1450
	Precision Mechanical Engineering	https://pme.knu.ac.kr	1270
	Energy Materials & Chemical Engineering	https://emce.knu.ac.kr/	1410 1330
	Textile & Fashion Design	http://textile.knu.ac.kr/	1280
	Convergence & Fusion system Engineering	http://cfse.knu.ac.kr/	1490
	Advanced Science and Technology Convergence	https://astc-bk21.knu.ac.kr/	1250
	Leisure Sports	http://dols.knu.ac.kr/	1430
Sports	Digital Fashion	https://style.knu.ac.kr	1310



Think
Experience
Respond

KNU

NATIONAL UNIVERSITY
KYUNGPOOK UNIVERSITY

for International Graduate Students



KNU KYUNGPPOOK
NATIONAL UNIVERSITY

en.knu.ac.kr