



THE UNIVERSITY
of ADELAIDE



2019 STUDENT ACCOMMODATION GUIDE

adelaide.edu.au

WELCOME.



THE UNIVERSITY OF ADELAIDE UNDERSTANDS THAT ACCOMMODATION PLAYS AN IMPORTANT ROLE IN ESTABLISHING THE FOUNDATION FOR ACADEMIC SUCCESS.

University of Adelaide students have access to an impressive portfolio of University-managed student accommodation options, made available specifically to support a successful transition into University life. University-managed student accommodation offers:

- Fully furnished accommodation - alleviating the need to buy and sell furniture and some appliances.
- Fees inclusive of rent and utilities - making it easy to budget.
- Residential communities made up exclusively of University of Adelaide students.
- A simple application and acceptance process.

Students who choose to spend their first year in University-managed student accommodation are generally better prepared to thrive in private rental accommodation in future years.

University of Adelaide students have access to the following accommodation options:

Campus	Accommodation
Managed by the University of Adelaide	
North Terrace and Waite	• The University of Adelaide Village • Mattanya Student Residences
Roseworthy	• Roseworthy Residential College
Made available through commercial partnership	
North Terrace and Waite	• urbanest at the University of Adelaide

02	Enhancing the education experience
04	The University of Adelaide Village
12	Roseworthy residential college
16	Mattanya student residences
18	urbanest at the University of Adelaide
20	Private rental accommodation
22	Accommodation advice for international students
24	Location map

ENHANCING THE EDUCATION EXPERIENCE





The University of Adelaide Village balcony



The University of Adelaide Village apartment

THE UNIVERSITY OF ADELAIDE UNDERSTANDS THAT ACCOMMODATION REQUIREMENTS CAN VARY FROM ONE STUDENT TO ANOTHER.

The Accommodation Service is tasked with the responsibility of supporting students to find an accommodation option that best suits their particular needs and thereby serves to enhance the education experience.

Whether it's a room in a private house shared by multiple tenants or a private bedroom with ensuite bathroom in a University-managed student accommodation facility, students should aim to find an environment which is free from distraction and provides access to suitable study space and resources (e.g. a reliable internet connection).

Students based at either North Terrace, including the Medical School, or Waite campus are encouraged to consider the value of being located in Adelaide's central business district.

In addition to enjoying the vibrant cosmopolitan lifestyle Adelaide's CBD offers there are significant savings, in both money and time, to be derived from access to the city's free tram and bus network.

Central city living also offers easy access to the shopping and recreational precincts of Australia's fifth largest city, such as Rundle Mall and Rundle Street, Gouger Street Café and Restaurant precinct, the Leigh Street bar district and Adelaide's iconic Central Market and Chinatown.

Maintaining an active and balanced lifestyle is important to making the most of University life.



THE UNIVERSITY OF ADELAIDE VILLAGE

The Village is the largest of the University-managed student accommodation options for the exclusive use of our student community. Situated in Adelaide's central business district in the dynamic Central Market and Chinatown precinct, The Village offers students a well-balanced approach to University life.

University - The best time of your life

It is often said that going to University is one of the most memorable times in a person's life. The services and facilities available at the University of Adelaide Village are provided to ensure that residents have every opportunity

to make the most of their 'once in a lifetime' university experience.

Quality purpose built student accommodation, in convenient central city location, provided in a safe and secure University-managed environment, shared with over four hundred University of Adelaide students, The Village offers the perfect platform to academic success.

**STUDENT ACCOMMODATION
OPERATED BY THE
UNIVERSITY OF ADELAIDE**





COMFORT FOOD

A short five minute walk from The Village is Central Market where students can buy fresh and healthy market produce, including fruit, vegetables, meat and seafood. Located next to Central Market is Chinatown where residents can access an abundance of food options, mostly of Asian persuasion, from a variety of food courts, specialist supermarkets and affordable restaurants.

The Central Market precinct provides residents with the choice of buying ingredients after university to take back to their fully equipped kitchen, to prepare a meal to be shared with a friend or their entire household. Alternatively, during examination periods or when assignments are due, the Central Market precinct provides students with an abundance of quick and scrumptious meal options.

Behind Chinatown, and just minutes from The Village, is the Gouger street café where residents can enjoy hot balmy summer nights and cosy winter evenings in the company of good friends and housemates over coffee or a pot of tea.



Short walk to Chinatown



Private bedroom



Fully furnished and air-conditioned

Fully furnished five bedroom townhouses or four bedroom apartments, complete with generous common living spaces, functional bedrooms, decorated with warm and happy colours, elevate the Village living experience above more contemporary student accommodation options.

Choose between a private bedroom with access to its own bathroom or the more affordable choice of a private bedroom, sharing a bathroom, with one other student of the same gender.

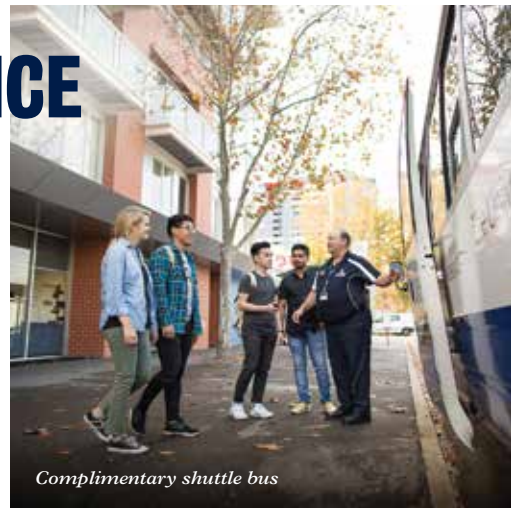
Spacious common kitchens shared by housemates come complete with a large fridge, electric cooktop, oven and kettle.

JUST LIKE HOME



CONVENIENCE

The Village offers the convenience of a free door to door shuttle service for residents making it easy for students to get to lectures. The Village shuttle service operates eleven times a day, Monday through Friday and connects residents to the Medical School and North Terrace campus. Seats are limited and must be booked in advance. Village residents also have access to the free city connector bus and the inter-campus bus service, which operates from North Terrace campus and will return residents to The Village after hours.



Complimentary shuttle bus

Indicative timetable	The Village	07:15	07:45	08:15	08:45	09:15	09:45	10:15	10:45	11:15	11:45	12:15
	Medical School North Terrace	07:22	07:52	08:22	08:52	09:22	09:52	10:22	10:52	11:22	11:52	12:22
	Medical School Frome Street	07:25	07:54	08:24	08:54	09:24	09:54	10:24	10:54	11:24	11:54	12:24
	North Terrace Campus	07:30	08:00	08:30	09:00	09:30	10:00	10:30	11:00	11:30	12:00	12:30
	Chinatown							10:38	11:08	11:38	12:08	12:38
	The Village	07:40	08:15	08:45	09:15	09:45	10:15	10:45	11:15	11:45	12:15	12:45

This service is subject to change.



ON-CAMPUS STUDY RESOURCES IN RESIDENCE

While classmates spend extended hours on-campus to access the study resources they can't replicate in other accommodation environments, Village residents benefit from the convenience of being able to return to the comfort of their accommodation environment to complete assignments and prepare for exams.

The Village offers residents access to free and unlimited WI-FI in all areas of the facility, a fully equipped computer room with connection from all bedrooms to a wireless printer. Dedicated study rooms can be booked, free of charge, for quiet individual study or group assignments.



Study rooms

Shared study spaces

COMMITMENT TO SECURITY

The Village offers independent living in a supervised environment. University staff and security personnel are available at the main reception desk located at the entrance to The Village, 24 hours per day, 7 days a week, to ensure the residential environment is kept safe and conducive to academic success at all times.

A sophisticated access control system offers peace of mind by ensuring that only registered occupants of The Village can gain entry to the facility or access to the accommodation precinct.

Security surveillance cameras installed throughout the common areas of the facility are monitored locally and by the security office on North Terrace campus.



The Village reception



Recreation room

STUDENT ENGAGEMENT PROGRAM

Designed to provide additional support to students during intensive study periods and to encourage them to make the most of University life, The University of Adelaide Village provides residents with the opportunity to participate in regular in-house learning support programs, sport and social activities, through the Village student engagement program.

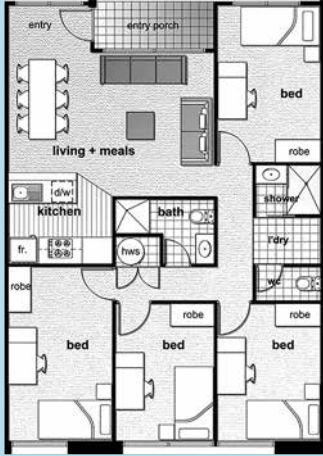
Developed in consultation with other University specialist support services, such as Counselling and Student Life, the program is exclusive to Village residents and is designed to assist students to improve their study skills set and accelerate their personal development.



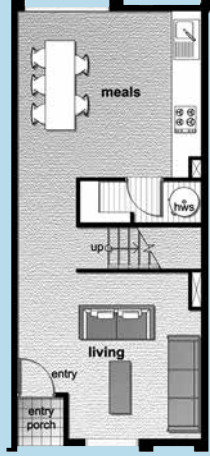
Cooking class

THE VILLAGE FLOORPLANS

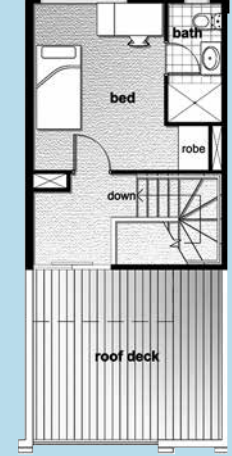
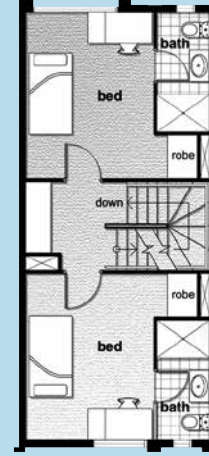
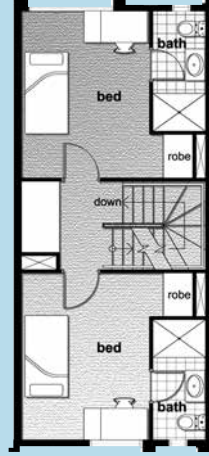
Students can choose to live in a townhouse or apartment at The Village (diagrams are indicative only—floor plans differ between townhouses/apartments throughout the facility).



Apartment Living
Example of a four-bedroom apartment



Townhouse Living
Example of a five-bedroom townhouse



Onsite laundromat



EASY TO BUDGET

Consider the exceptional value of an accommodation fee that includes access to a fully furnished dwelling, an unlimited wireless internet connection and all utilities (i.e. water, gas and electricity): with the flexibility of paying the accommodation fee over two instalments (April and September) directly to the University during the course of the year.

An on-site laundromat offers residents secure access to commercial capacity washing machines and dryers operated by smart card technology.

Added value

Students who secure an accommodation place at The Village in their first year are eligible for a complimentary airport pickup service when booked in advance.

Live to Succeed at the University of Adelaide Village

For more information please visit: www.adelaide.edu.au/accommodation

Applications

To apply visit: www.adelaide.edu.au/accommodation and register on the Accommodation Portal before submitting your application via the portal.

The Village fee schedule

Accommodation fee includes cost of all utilities, including unlimited wi-fi, water, gas and electricity.

Townhouse

Private bathroom	A\$14,508
Share bathroom*	A\$13,468

Apartment

Share bathroom*	A\$13,468
Refundable security deposit	A\$500

* Shared bathrooms are shared between two occupants of the same gender.

Spend time with friends in the recreation room

STUDENT ENGAGEMENT

Life-long friendships

A spacious recreation room complete with a home entertainment theatre, with access to free to air and satellite television, a PlayStation compound, pool table and table tennis table, the recreation room is the perfect location to meet fellow students and develop friendships that may last a life time and cross global borders.

The Village offers University of Adelaide students the perfect platform from which to make a supported transition into University life.



The Village soccer team



Enjoy Central City living

Adelaide is one of Australia's most cosmopolitan cities, with an array of cafés, restaurants and shops reflecting the diversity of its ethnic communities. Access to free public transport throughout the central business district means that students who choose to live in the CBD have unrestricted and easy access to all the city has to offer seven days a week.

Village residents are spoiled for choice living in walking distance to Adelaide's Central Market and Chinatown.

ROSEWORTHY RESIDENTIAL COLLEGE

Roseworthy Residential college accommodation is only available to students of the University's Roseworthy campus, which is located 50 km north of the city campus. Operated by the University of Adelaide, Roseworthy Residential College offers students the opportunity to enjoy the benefits of on-campus residential living.

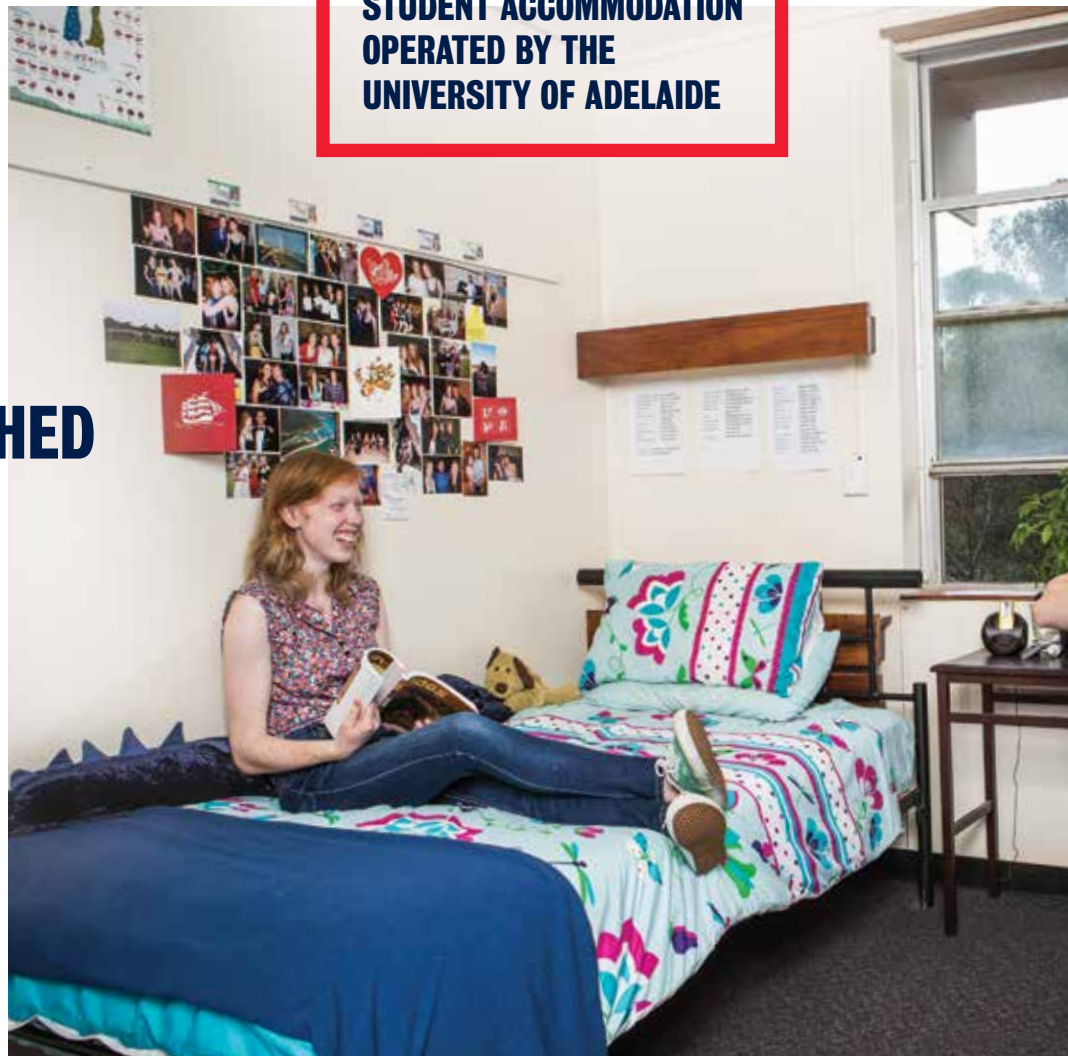


Shared cooking facilities

**STUDENT ACCOMMODATION
OPERATED BY THE
UNIVERSITY OF ADELAIDE**

HALLS OF RESIDENCE AND FURNISHED HOUSES

- 179 places
- Fully furnished
- Private bedrooms
- Air-conditioned
- Free wireless internet connection
- Evening meal (Monday to Friday) included in fee
- Common bathrooms
- Cleaning services





RESIDENTIAL COLLEGE FACILITIES

(exclusive to college residents)

- Study rooms and computer suite
- Common kitchens
- Television room with Foxtel
- Billiard room
- Laundromat
- Outdoor BBQ entertainment area



Private bedroom



Transport service

TRANSPORT

A transport service to Gawler links with trains to and from Adelaide. An intercampus shuttle bus operates each weekday between Roseworthy, North Terrace and Waite campuses. Students who choose to secure an accommodation place at

Roseworthy Residential College in their first year are eligible for a complimentary airport pick up service when booked in advance.

For more information please visit www.adelaide.edu.au/accommodation

ON-CAMPUS FACILITIES

- Library
- Roseworthy student hub
- Floodlit sporting facilities (including a 25m swimming/diving pool)
- Gymnasium
- Cafe and shop



Roseworthy campus barbecue area



PASTORAL CARE

Pastoral care is a significant responsibility of the staff of the college. A peer support program led by the Head of College and senior residents provides an environment conducive to academic success and supportive of students' overall wellbeing.



ON-CAMPUS SPORTS AND RECREATION

A wide range of activities are available for students and residents, including:

- Tennis
- Basketball
- Netball
- Soccer
- Social events
- Animal student interest groups



Student games room



Applications

To apply visit: www.adelaide.edu.au/accommodation and register on the Accommodation Portal before submitting your application via the portal.

Roseworthy Residential College fee schedule

Accommodation (39 weeks)	A\$7,400
College social fee	A\$100
Refundable security deposit	A\$500

The accommodation fee includes provision for five evening meals (weekdays only, excluding public holidays) throughout the 39-week term.

MATTANYA STUDENT RESIDENCES



STUDENT ACCOMMODATION OPERATED BY THE UNIVERSITY OF ADELAIDE

Mattanya is comprised of a group of four University-owned residences situated in North Adelaide. A fifteen minute walk to North Terrace campus and five minutes from the trendy Melbourne Street café and restaurant precinct, Mattanya offers comfortable, convenient and independent living in a quiet suburban location.

When you secure a place at Mattanya you will be allocated a room within a four or five bedroom residence, sharing a bathroom and the common living areas of the house with other University of Adelaide students.

Consider the exceptional value of an accommodation fee that includes access to a fully furnished dwelling, an unlimited wireless internet connection and all utilities (i.e. water, gas and electricity): with the flexibility of paying the accommodation fee over two instalments (April and September) directly to the University through the course of the year.

Accepting a place at Mattanya provides you with the following:

- fully equipped kitchen complete with refrigerator/freezer, gas cook top, oven and microwave
- comfortable air-conditioned living areas with TV, dining table, chairs and lounges
- bedrooms that include a bed, desk, chair and wardrobe
- a washing machine and dryer
- unlimited wireless internet connectivity
- access to a recreation room equipped with PlayStation and a TV with a Foxtel connection for the exclusive use of all Mattanya residents
- an outdoor courtyard and BBQ unit
- free onsite car parking is available upon application and subject to availability

For more information visit www.adelaide.edu.au/accommodation





Mattanya Student Residences fee schedule

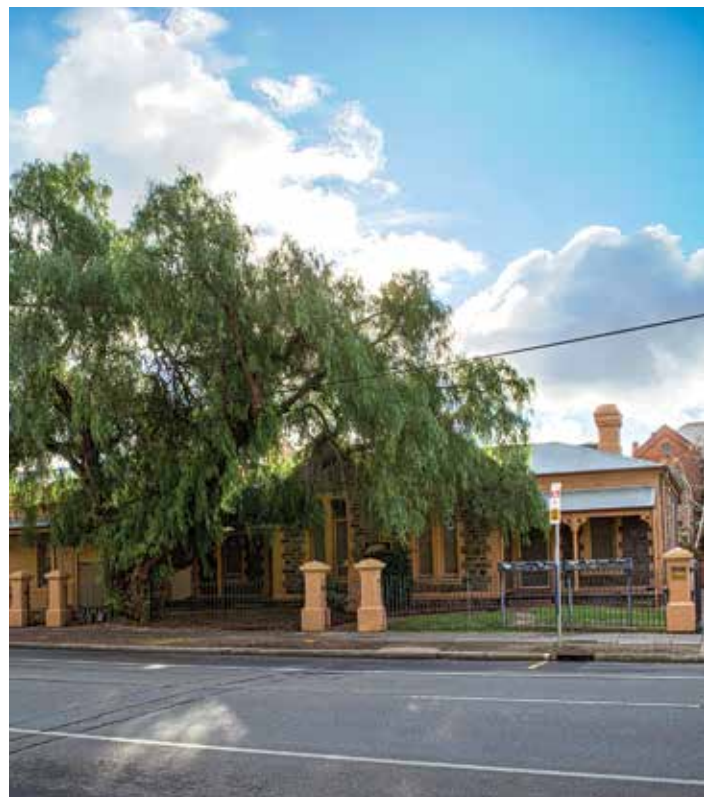
Room option in a shared house

Share bathroom	A\$11,960
Refundable security deposit	A\$500

The accommodation fee includes the cost of all utilities (including unlimited wireless internet, water, gas and electricity).

Applications

To apply visit www.adelaide.edu.au/accommodation and register on the Accommodation Portal before submitting your application via the portal.



urbanest AT THE UNIVERSITY OF ADELAIDE



PREFERRED STUDENT ACCOMMODATION PROVIDER OF THE UNIVERSITY OF ADELAIDE

At urbanest you have everything you need to enjoy your time studying from intelligently designed social areas, an action packed monthly activity calendar and go-to-residents for peer support.

Located directly across from the main University of Adelaide campus and a short walk to Rundle Mall, you'll be in a central location that will allow you to explore all Adelaide has to offer during your studies.

Why choose urbanest?

- Preferred student accommodation provider of the University of Adelaide
- Close to universities, transport and amenities
- Fully furnished shared apartments and studios with reverse-cycle air-conditioning
- Wireless internet in every room
- Support upon arrival with a property induction and welcome events
- Superb social spaces including a cinema, rooftop terrace with BBQ's, fully equipped gym and study spaces

- uLife – our community support and engagement program that's free for all urbanest residents.
- No hidden costs. All-inclusive rents mean all your bills are covered: electricity, water, internet and contents insurance
- Safe and secure with a 24/7 dedicated onsite team and swipe card access for all rooms

Building features

- Intelligently designed apartments and studios that combine style and practicality
- Close to campus, public transport, shops, amenities and social centres
- Safe and secure with swipe card access and CCTV
- Rooftop terrace with BBQs and pool table
- Fully equipped gym
- Study rooms
- A large social area on the ground floor with comfortable seating
- A modern card operated laundry
- Wireless internet throughout the building

- 24/7 dedicated onsite team
- Cinema Room
- Games Room
- Computer Hub
- Secure bike store

Location

urbanest at the University of Adelaide is located along the vibrant North Terrace, in a perfect location just across the road from the main University of Adelaide campus and a 5 minute walk to the University of Adelaide College. With Rundle Mall only minutes away, a bus stop on your doorstep and Adelaide Railway Station 10 minutes away, urbanest at the University of Adelaide is the ideal place for students to live and study.

Room types

Whether you want to live in a shared apartment or in your own self-contained studio, urbanest rooms are designed specifically with the student lifestyle in mind and to suit a range of budgets.



urbanest at the University of Adelaide fee schedule

Twin share studio	A\$13,988
Private twin share studio	A\$15,028
Large private twin share studio	A\$16,068
Single room in 8 person apartment (shared bathroom)	A\$16,380
Single ensuite room in 5 person apartment	A\$17,420
Large studio with double bed	A\$23,660
Large studio with double bed (wheelchair accessible)	A\$23,660

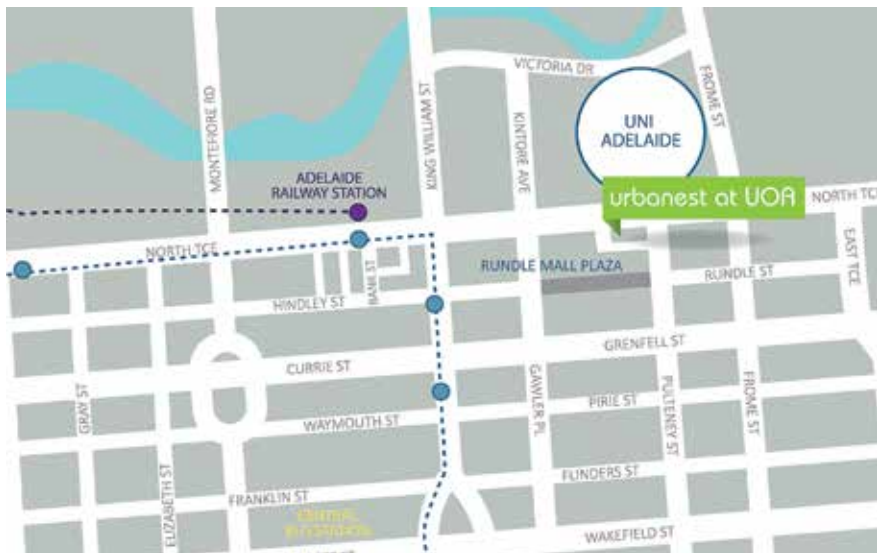
Refundable security deposit is required

Fees represented in the above table reflect 2018 pricing and are subject to change.

For more information visit www.adelaide.edu.au/accommodation

Applications

To apply visit: www.adelaide.edu.au/accommodation and register on the Accommodation Portal before submitting your application via the portal.







PRIVATE RENTAL ACCOMMODATION

(including share accommodation)

PRIVATE RENTAL ACCOMMODATION IS THE MOST AFFORDABLE OPTION IN ADELAIDE BUT IT CAN BE THE HARDEST TO SECURE AND DIFFICULT TO SETTLE INTO.

The University encourages students to consider choosing a University-managed student accommodation option in their first year so they have time to settle into their study routine, become familiar with private rental accommodation options in Adelaide and to get used to the public transport network before beginning their search for quality private rental accommodation.

Students have access to a wide range of online platforms to search for, and secure private rental accommodation, but most of these are unregulated which means they are being provided outside of local government framework which exists to protect the interests of both the provider and tenant.

Students looking to find private rental accommodation (including share accommodation) are encouraged to:

- Inspect private rental accommodation options before making a financial commitment to secure the property or room. This will require students to book temporary accommodation for their arrival in Adelaide.
- Access the rental database to find private rental accommodation options from providers who generally have some association with the University community.
- Only make commitments to private rental accommodation options that are underpinned by a written agreement and where receipts are issued for all payments, including security bonds.

Finding a quality private rental accommodation option, in a convenient location, sharing with people you are compatible with, offered by providers who are committed to your safety and wellbeing, will require an investment in time.

Online platforms which promote flexible arrangements are likely to be unregulated and can be problematic.

The Accommodation Service is available to help students to make a well informed decision about accommodation prior to arriving in Adelaide.

For more information about private rental accommodation or to access the rental database please visit www.adelaide.edu.au/accommodation

ACCOMMODATION ADVICE FOR INTERNATIONAL STUDENTS

COPING WITH CULTURAL TRANSITION CAN BE DIFFICULT, NOT TO MENTION ADJUSTING TO A NEW CITY AND UNIVERSITY LIFE.



It is for this reason the University of Adelaide recommends that international students' secure long-term accommodation before they arrive in Adelaide as searching for permanent housing in a new country can be difficult, distracting and at times overwhelming.

University-managed accommodation options can be easily secured from offshore and in advance of your arrival.

Our dedicated support team at the Accommodation Service is available to advise and help students to make a well informed decision about accommodation for arrival in Adelaide.

For more information please visit www.adelaide.edu.au/accommodation

Arriving in Adelaide

For students who choose not to secure a place in University-managed student accommodation for their first year in Adelaide, the Accommodation Service website provides a comprehensive list of temporary accommodation options. It is important that students who choose to book temporary accommodation make finding a

long term option a priority on arrival and are encouraged to visit the Accommodation Service for an overview of available options and access to the rental database.

Adelaide international airport is approximately a twenty minute taxi ride to the city. Taxis are readily available at the designated taxi rank which is located to the left hand side of the main terminal as you exit.

Alternatively, students are able to book an airport pick up service through the University at a cost. The service should only be booked when students have confirmed their flight arrival information and accommodation destination. The fee for the service must be paid at the time of booking.

Students who choose to secure an accommodation place in University-managed student accommodation (e.g. The Village, Mattanya Student Residences or Roseworthy Residential College) in their first year are eligible for a complimentary airport pick up service when booked in advance.

For more information please visit www.adelaide.edu.au/accommodation



Approved Accommodation

International students under 18 years of age

International students who are eligible for direct entry into a University of Adelaide undergraduate program whilst still under 18 years of age may enter into a Welfare Monitoring Agreement. Students who enter into this agreement are required to live in University approved accommodation so their welfare can be carefully monitored.

Eligible international students will be offered the option of living at urbanest at the University of Adelaide (with no meal provision) or with a homestay provider (with a meal provision).

To apply

Eligible international students are not required to lodge a separate application. They will receive information pertaining to their approved accommodation options with their offer of academic admission.

Study Abroad and Exchange

Study Abroad and Exchange students have access to accommodation packages

with the University's preferred student accommodation partner at urbanest at the University of Adelaide.

An accommodation offer for a place at urbanest at the University of Adelaide will be extended with the academic offer. Students who choose not to accept the recommended option should contact the Accommodation Service for alternative options.

For more information please visit www.adelaide.edu.au/accommodation

English Language Students

GEAP or PEP

English Language students have access to short term accommodation packages at The University of Adelaide Village.

The Village is the largest of the University-managed student accommodation options for the exclusive use of our student community. Situated in Adelaide's central business district in the dynamic Central Market and Chinatown precinct, The Village offers students' a well-balanced approach to University life.

For more information please visit www.adelaide.edu.au/accommodation

University of Adelaide College

(Foundation Studies and Degree Transfer Programs)

University of Adelaide College students have access to accommodation packages with the University's preferred student accommodation partner at urbanest at the University of Adelaide.

Purpose-built with students in mind, the property offers studios and shared apartment options, shared exclusively with University of Adelaide students from all over the world, in a building managed by the University's preferred student accommodation provider.

With all-inclusive rents that include electricity, water, internet and contents insurance, urbanest offers a convenient, safe and great value option for the ideal study experience in Adelaide.

For more information please visit www.adelaide.edu.au/accommodation

LOCATION MAP





FOR FURTHER ENQUIRIES

Accommodation Service,
University of Adelaide, Level 4, Hub Central,
North Terrace SA 5005 Australia

TELEPHONE +61 8 8313 5220

EMAIL accommodation@adelaide.edu.au

 adelaide.edu.au/accommodation

 facebook.com/AU.Accommodation

 twitter.com/uniofadelaid

 snapchat.com/add/uniofadelaid

 instagram.com/au.accommodation/

© The University of Adelaide.
Published August 2018 2958-17
CRICOS 00123M

DISCLAIMER The information in this publication is current as at the date of printing and is subject to change. You can find updated information on our website at adelaide.edu.au or contact us on 1800 061 459. The University of Adelaide assumes no responsibility for the accuracy of information provided by third parties.